

## **Project-0417**

Partner for Contact:  
Order No.:  
Company:  
Customer No.:

Date: 17.04.2026  
Operator:



Operator  
Telephone  
Fax  
e-Mail

## Table of contents

### Project-0417

Project Cover	1
Table of contents	2
Luminaire parts list	3
<b>LED Stadium Lamp 4x250W 20jã_IESNA2002</b>	
Luminaire Data Sheet	4
<b>Exterior Scene 1</b>	
Planning data	5
Luminaires (layout plan)	6
Luminaires (coordinates list)	7
Sport Sites (layout plan)	9
Sport Sites (Coordinates List)	10
Pole Positions (Coordinates List)	11
Pole Luminaires (Summary)	13
Sport Luminaires (Coordinates List)	25
3D Rendering	28
False Color Rendering	29
<b>Exterior Surfaces</b>	
<b>Soccer Field 1 Calculation Grid (PA)</b>	
Summary	30
Isolines (E, Perpendicular)	31
Greyscale (E, Perpendicular)	32
Value Chart (E, Perpendicular)	33
Table (E, Perpendicular)	34

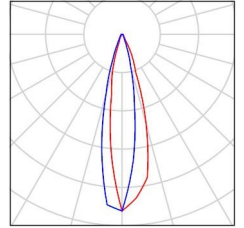


Operator  
Telephone  
Fax  
e-Mail

## Project-0417 / Luminaire parts list

42 Pieces LED Stadium Lamp 4x250W 20;ã\_IESNA2002  
(Type 1)  
Article No.:  
Luminous flux (Luminaire): 155641 lm  
Luminous flux (Lamps): 155641 lm  
Luminaire Wattage: 937.6 W  
Luminaire classification according to CIE: 100  
CIE flux code: 90 96 99 100 101  
Fitting: 1 x User defined (Correction Factor  
1.000).

See our luminaire  
catalog for an image of  
the luminaire.



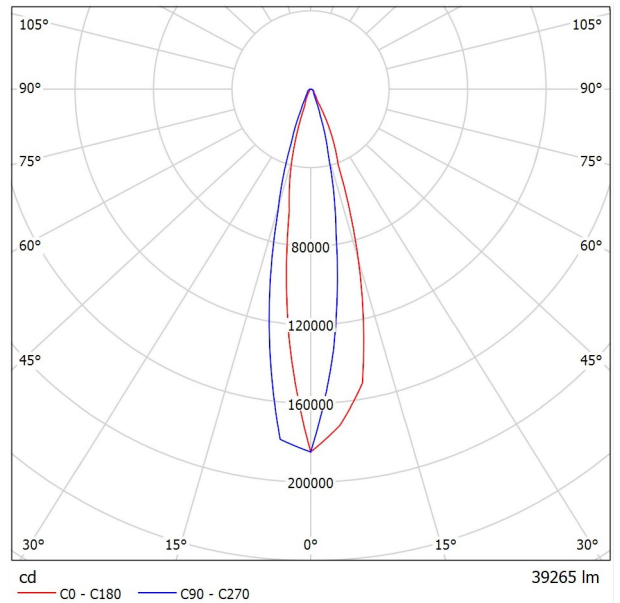


Operator  
Telephone  
Fax  
e-Mail

## LED Stadium Lamp 4x250W 20jã\_ESNA2002 / Luminaire Data Sheet

Luminous emittance 1:

See our luminaire catalog for an image of the luminaire.



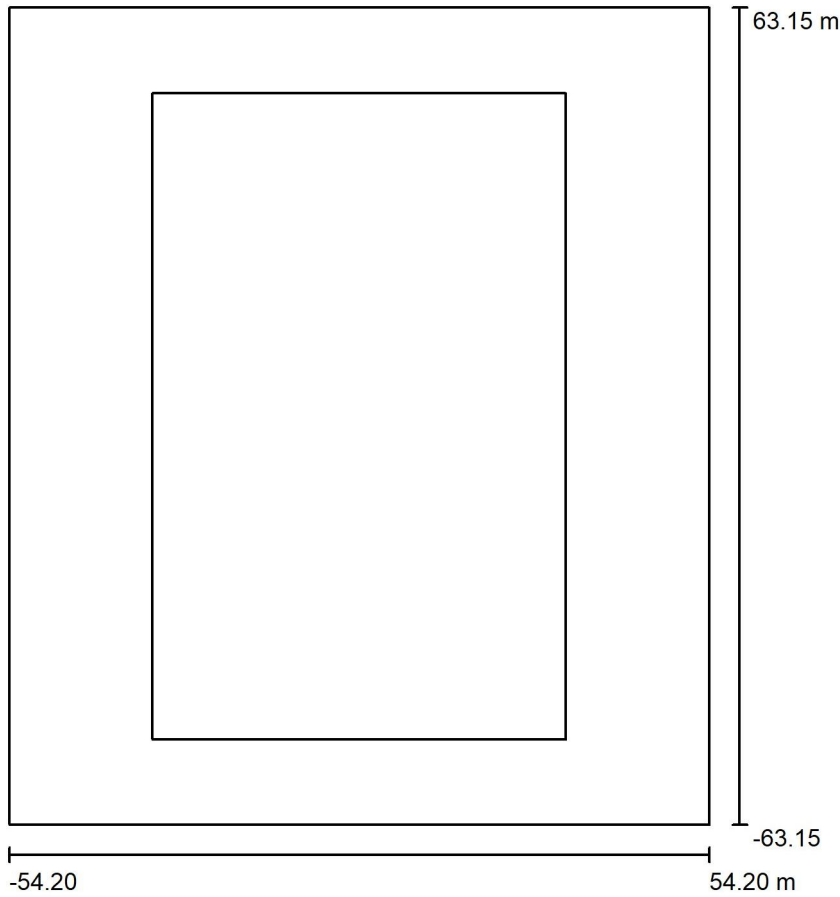
Luminaire classification according to CIE: 100  
CIE flux code: 90 96 99 100 101

Due to missing symmetry properties, no UGR table can be displayed for this luminaire.



Operator  
 Telephone  
 Fax  
 e-Mail

**Exterior Scene 1 / Planning data**



Light loss factor: 0.80, ULR (Upward Light Ratio): 5.0%

Scale 1:1171

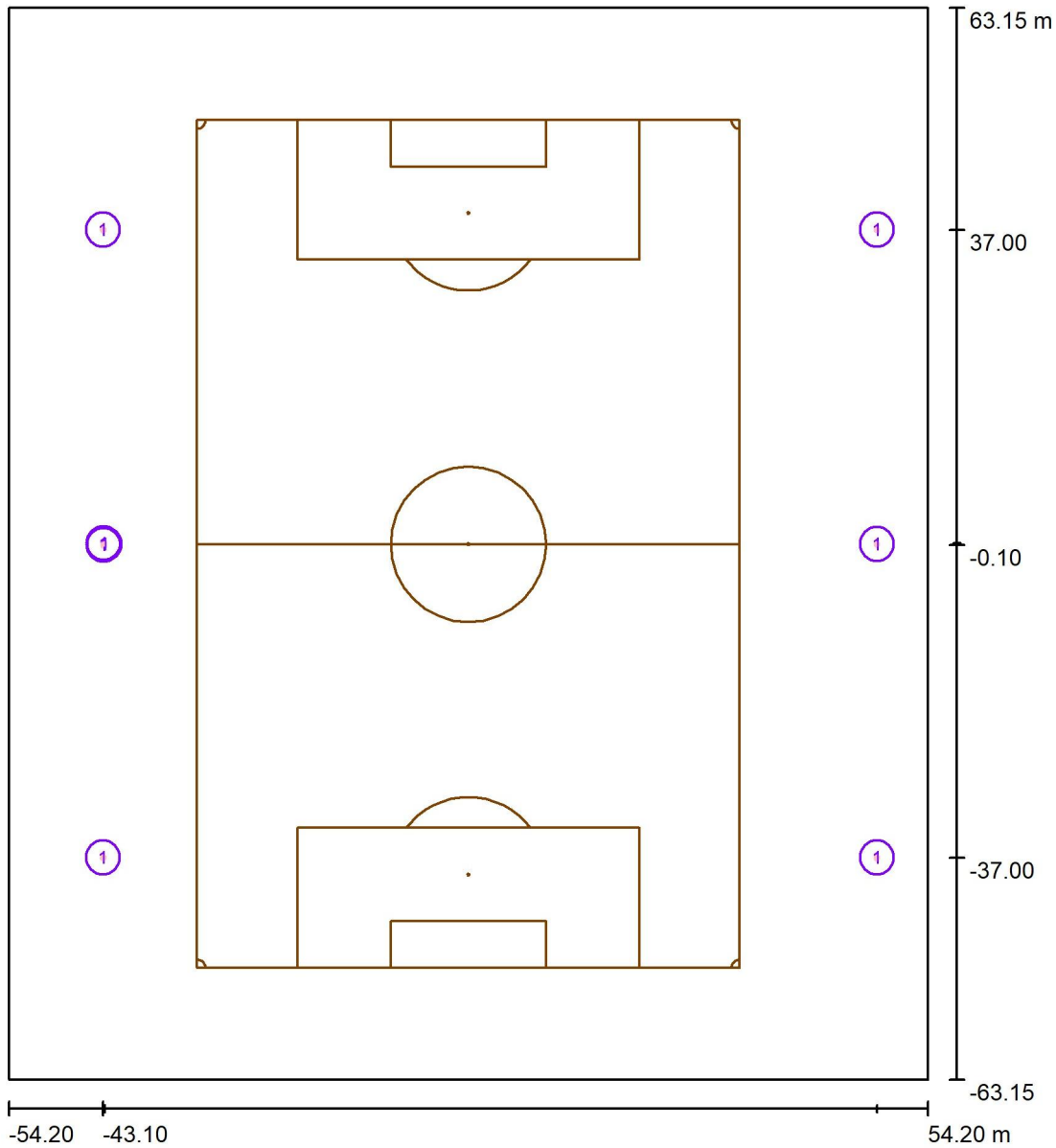
**Luminaire Parts List**

No.	Pieces	Designation (Correction Factor)	Φ (Luminaire) [lm]	Φ (Lamps) [lm]	P [W]
1	42	LED Stadium Lamp 4x250W 2013_IESNA2002 (Type 1)* (1.000)	155641	155641	937.6
*Modified Technical Specifications			Total: 6536922	Total: 6536922	39379.2



Operator  
Telephone  
Fax  
e-Mail

**Exterior Scene 1 / Luminaires (layout plan)**



Scale 1 : 855

**Luminaire Parts List**

No.	Pieces	Designation
1	42	LED Stadium Lamp 4x250W 20;ä_IESNA2002 (Type 1)*

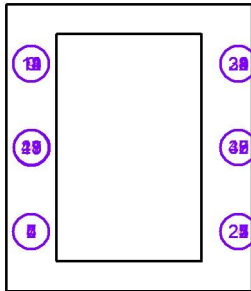
\*Modified Technical Specifications

Operator  
Telephone  
Fax  
e-Mail

## Exterior Scene 1 / Luminaires (coordinates list)

### LED Stadium Lamp 4x250W 20iã\_IESNA2002 (Type 1)

155641 lm, 937.6 W, 1 x 1 x User defined (Correction Factor 1.000).



No.	Position [m]			Rotation [°]		
	X	Y	Z	X	Y	Z
1	-43.100	-37.000	22.000	63.3	0.0	-82.4
2	-43.100	-37.000	22.000	62.7	0.0	-48.2
3	-43.100	-37.000	22.000	63.4	0.0	-64.1
4	-43.100	-37.000	22.000	58.2	0.0	-106.4
5	-43.100	-37.000	22.000	61.0	0.0	-24.3
6	-43.100	-37.000	22.000	62.5	0.0	-96.4
7	-43.100	-37.000	22.000	43.3	0.0	-123.3
8	-43.100	37.000	22.000	63.3	0.0	-97.6
9	-43.100	37.000	22.000	62.7	0.0	-131.8
10	-43.100	37.000	22.000	63.4	0.0	-115.9
11	-43.100	37.000	22.000	58.2	0.0	-73.6
12	-43.100	37.000	22.000	61.0	0.0	-155.7
13	-43.100	37.000	22.000	62.5	0.0	-83.6
14	-43.100	37.000	22.000	43.3	0.0	-56.7
15	-43.000	-0.100	22.000	61.7	0.0	-160.0
16	-43.000	-0.100	22.000	60.3	0.0	-146.3
17	-43.000	-0.100	22.000	60.8	0.0	-121.3
18	-43.000	0.100	22.000	61.7	0.0	-20.0
19	-43.000	0.100	22.000	60.3	0.0	-33.7
20	-43.000	0.100	22.000	60.8	0.0	-58.7
21	48.200	-37.000	22.000	64.2	0.0	65.2
22	48.200	-37.000	22.000	62.8	0.0	27.3
23	48.200	-37.000	22.000	64.9	0.0	96.9
24	48.200	-37.000	22.000	63.5	0.0	48.9
25	48.200	-37.000	22.000	64.7	0.0	84.5
26	48.200	-37.000	22.000	61.5	0.0	106.0
27	48.200	-37.000	22.000	45.8	0.0	116.0
28	48.200	37.000	22.000	64.2	0.0	114.8



Operator  
Telephone  
Fax  
e-Mail

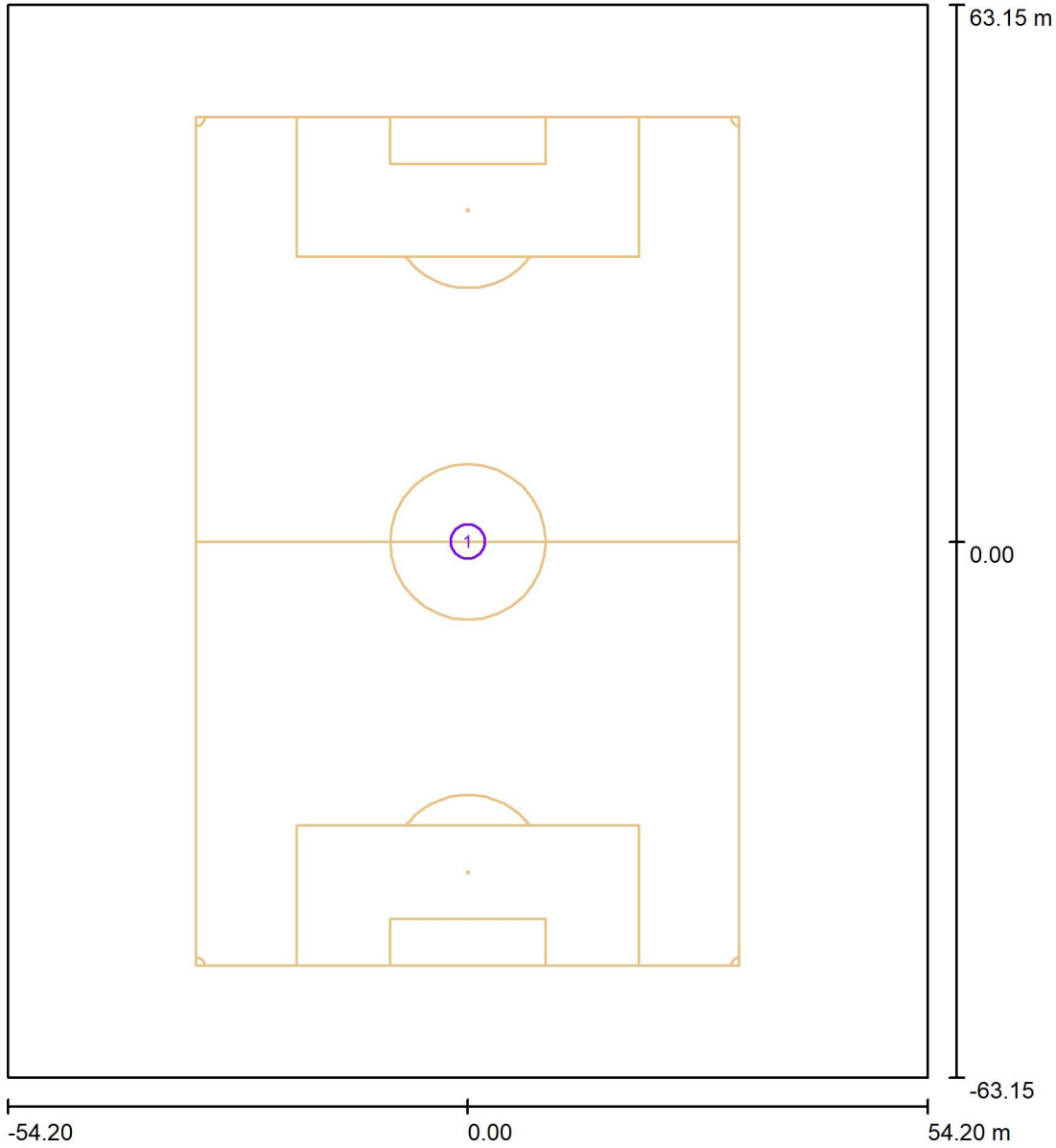
### Exterior Scene 1 / Luminaires (coordinates list)

No.	Position [m]			Rotation [°]		
	X	Y	Z	X	Y	Z
29	48.200	37.000	22.000	62.8	0.0	152.7
30	48.200	37.000	22.000	64.9	0.0	83.1
31	48.200	37.000	22.000	63.5	0.0	131.1
32	48.200	37.000	22.000	64.7	0.0	95.5
33	48.200	37.000	22.000	61.5	0.0	74.0
34	48.200	37.000	22.000	45.8	0.0	64.0
35	48.200	0.000	22.000	61.9	0.0	153.7
36	48.200	0.000	22.000	63.0	0.0	121.5
37	48.200	0.000	22.000	62.8	0.0	141.8
38	48.200	0.000	22.000	61.9	0.0	26.3
39	48.200	0.000	22.000	63.0	0.0	58.5
40	48.200	0.000	22.000	62.8	0.0	38.2
41	-42.900	0.000	22.000	58.9	0.0	-90.0
42	48.200	0.000	22.000	63.1	0.0	90.0



Operator  
Telephone  
Fax  
e-Mail

### Exterior Scene 1 / Sport Sites (layout plan)



Scale 1 : 855

#### Sport Site Parts List

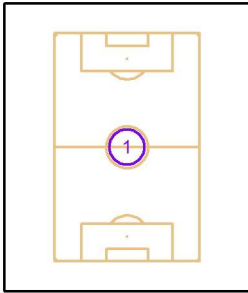
No.	Pieces	Designation
1	1	Soccer Field



Operator  
Telephone  
Fax  
e-Mail

### Exterior Scene 1 / Sport Sites (Coordinates List)

#### Soccer Field

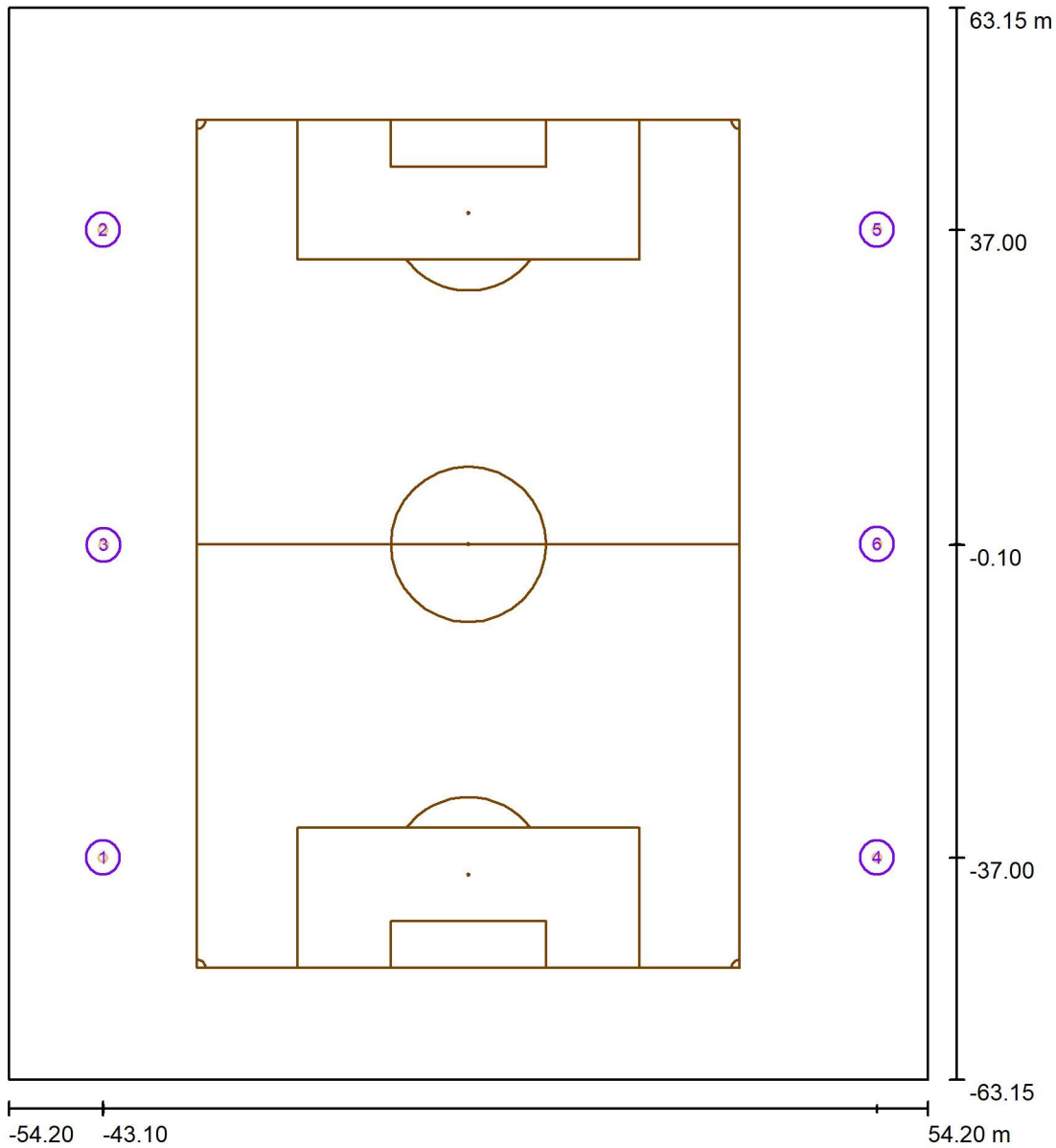


No.	Position [m]			Size Playing Area [m]		Size Total Area [m]		Rotation [°]		
	X	Y	Z	L	W	L	W	X	Y	Z
1	0.000	0.000	0.000	100.000	64.000	100.000	64.000	0.0	0.0	-90.0



Operator  
Telephone  
Fax  
e-Mail

**Exterior Scene 1 / Pole Positions (Coordinates List)**



Scale 1 : 855

**List of the Pole Positions**

No.	Designation	Position [m]		
		X	Y	Z
1	Pole Position 1	-43.100	-37.000	0.000
2	Pole Position 2	-43.100	37.000	0.000
3	Pole Position 3	-43.000	-0.100	0.000
4	Pole Position 4	48.200	-37.000	0.000



Operator  
Telephone  
Fax  
e-Mail

### Exterior Scene 1 / Pole Positions (Coordinates List)

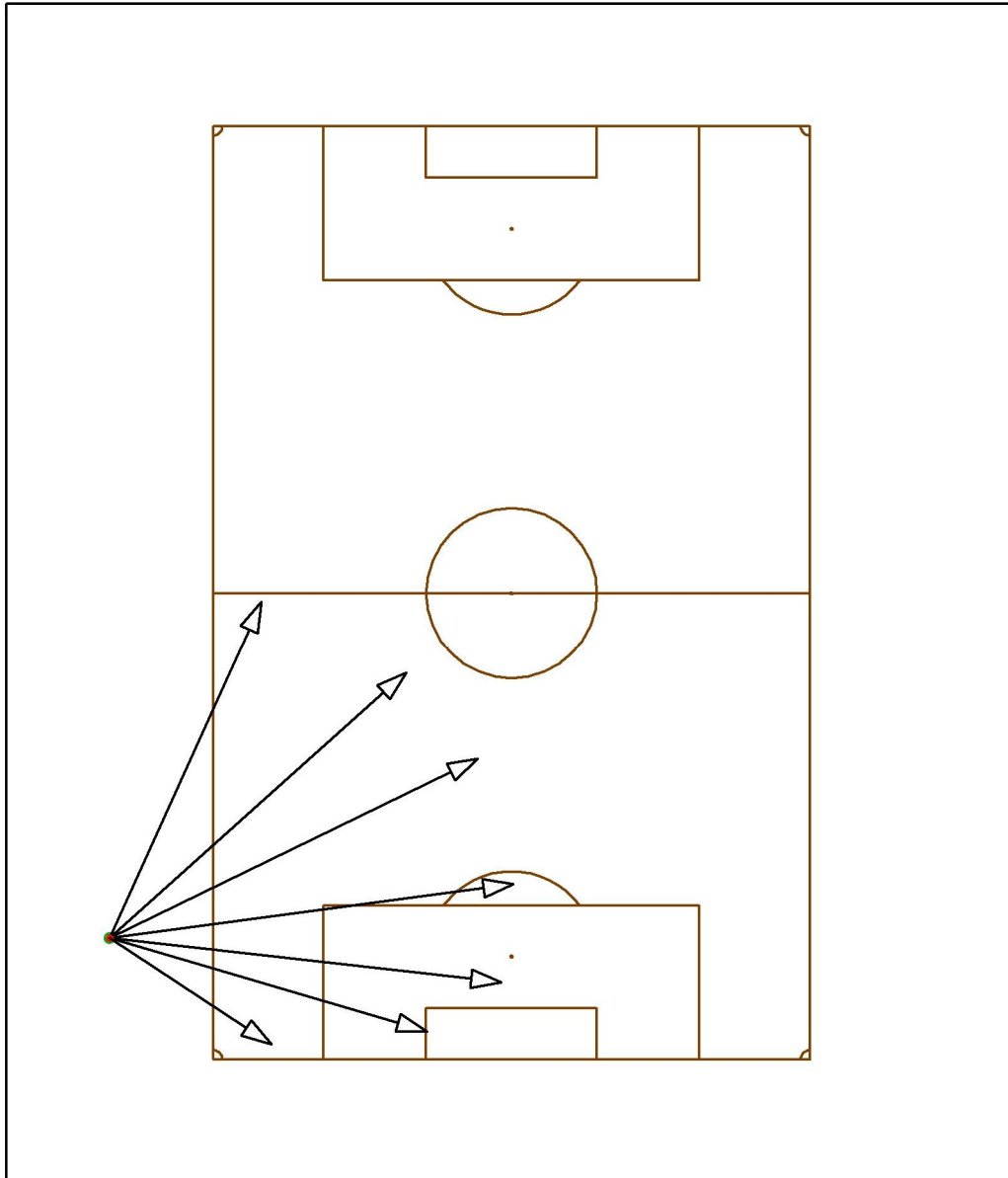
#### List of the Pole Positions

No.	Designation	Position [m]		
		X	Y	Z
5	Pole Position 5	48.200	37.000	0.000
6	Pole Position 6	48.200	0.000	0.000



Operator  
 Telephone  
 Fax  
 e-Mail

### Exterior Scene 1 / Pole Luminaires (Summary)



Position: (-43.100 m, -37.000 m, 0.000 m)

No.	Luminaire	Aiming Point [m]			Angle [°]	Alignment
		X	Y	Z		
1	LED Stadium Lamp 4x250W 20;ä_IESNA2002	0.200	-31.200	0.000	26.7	(C 90, G IMax)
2	LED Stadium Lamp 4x250W 20;ä_IESNA2002	-11.300	-8.529	0.000	27.3	(C 90, G IMax)
3	LED Stadium Lamp 4x250W 20;ä_IESNA2002	-3.600	-17.800	0.000	26.6	(C 90, G IMax)
4	LED Stadium Lamp 4x250W 20;ä_IESNA2002	-9.031	-47.012	0.000	31.8	(C 90, G IMax)



Operator  
Telephone  
Fax  
e-Mail

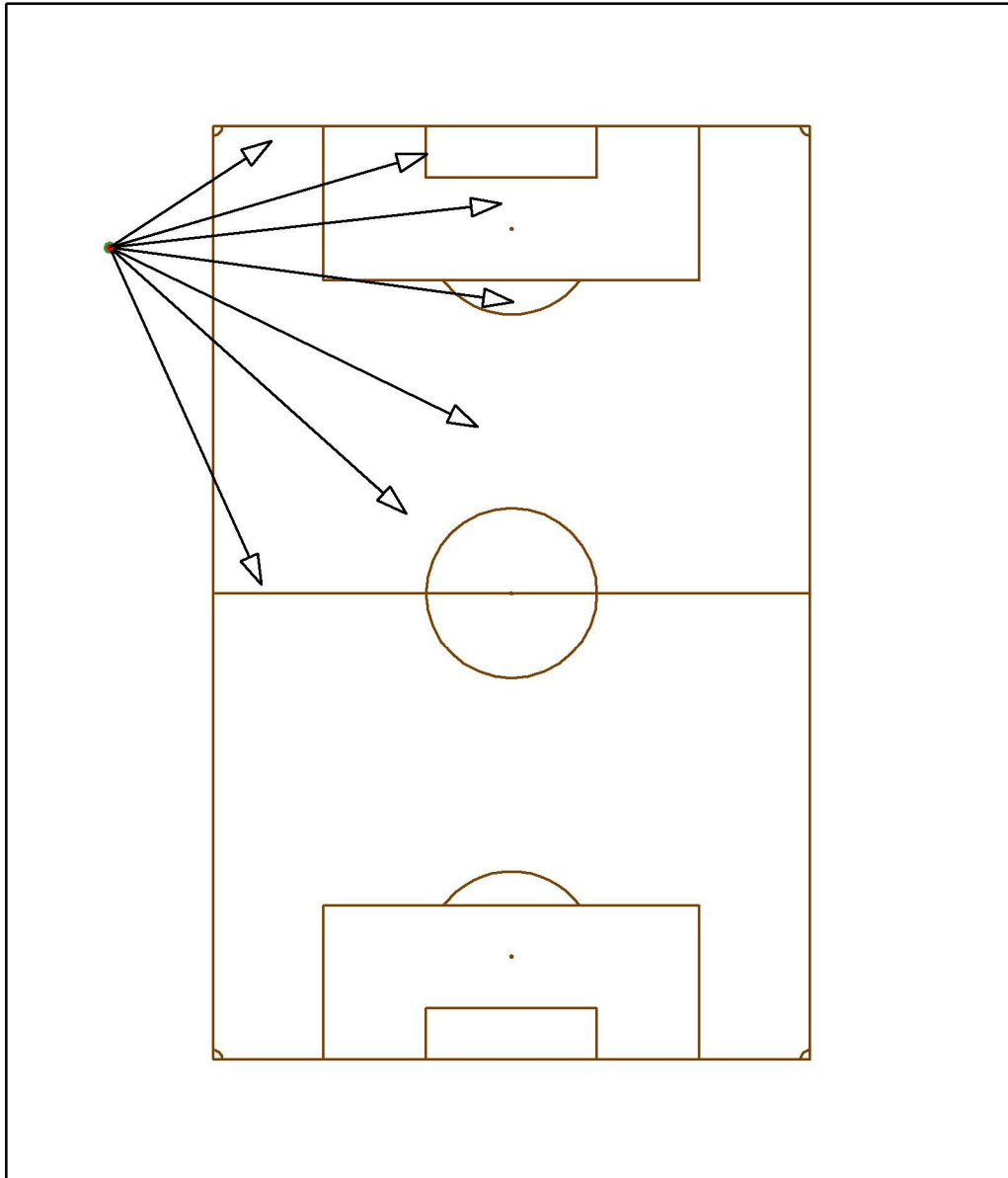
## Exterior Scene 1 / Pole Luminaires (Summary)

No.	Luminaire	Aiming Point [m]			Angle [°]	Alignment
		X	Y	Z		
5	LED Stadium Lamp 4x250W 20jã_IESNA2002	-26.800	-0.900	0.000	29.0	(C 90, G IMax)
6	LED Stadium Lamp 4x250W 20jã_IESNA2002	-1.100	-41.706	0.000	27.5	(C 90, G IMax)
7	LED Stadium Lamp 4x250W 20jã_IESNA2002	-25.741	-48.400	0.000	46.7	(C 90, G IMax)



Operator  
Telephone  
Fax  
e-Mail

### Exterior Scene 1 / Pole Luminaires (Summary)



Position: (-43.100 m, 37.000 m, 0.000 m)

No.	Luminaire	Aiming Point [m]			Angle [°]	Alignment
		X	Y	Z		
1	LED Stadium Lamp 4x250W 20;ä_IESNA2002	0.200	31.200	0.000	26.7	(C 90, G IMax)
2	LED Stadium Lamp 4x250W 20;ä_IESNA2002	-11.300	8.529	0.000	27.3	(C 90, G IMax)
3	LED Stadium Lamp 4x250W 20;ä_IESNA2002	-3.600	17.800	0.000	26.6	(C 90, G IMax)
4	LED Stadium Lamp 4x250W 20;ä_IESNA2002	-9.031	47.012	0.000	31.8	(C 90, G IMax)



Operator  
Telephone  
Fax  
e-Mail

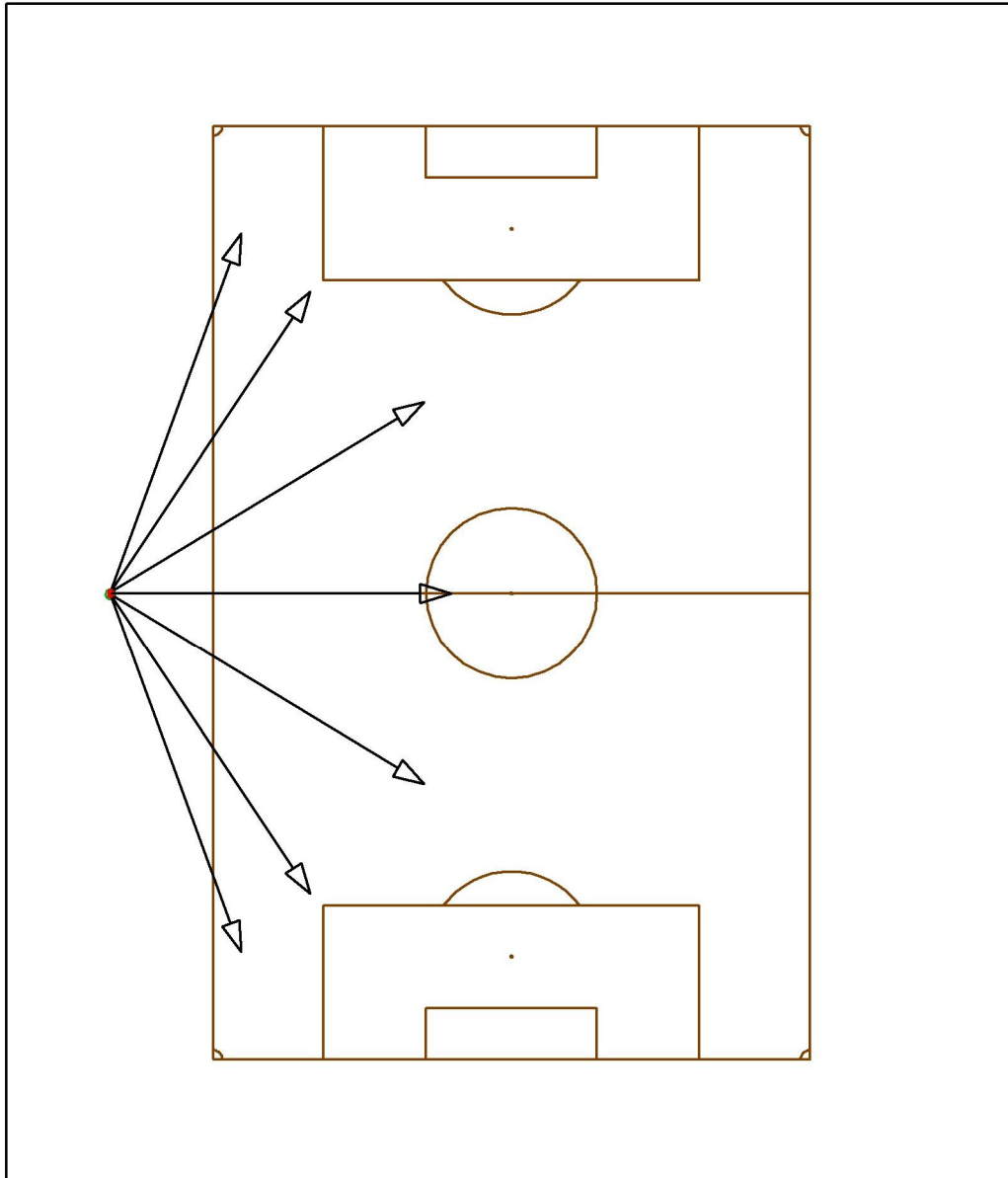
### Exterior Scene 1 / Pole Luminaires (Summary)

No.	Luminaire	Aiming Point [m]			Angle [°]	Alignment
		X	Y	Z		
5	LED Stadium Lamp 4x250W 20iã_IESNA2002	-26.800	0.900	0.000	29.0	(C 90, G IMax)
6	LED Stadium Lamp 4x250W 20iã_IESNA2002	-1.100	41.706	0.000	27.5	(C 90, G IMax)
7	LED Stadium Lamp 4x250W 20iã_IESNA2002	-25.741	48.400	0.000	46.7	(C 90, G IMax)



Operator  
 Telephone  
 Fax  
 e-Mail

### Exterior Scene 1 / Pole Luminaire (Summary)



Position: (-43.000 m, -0.100 m, 0.000 m)

No.	Luminaire	Aiming Point [m]			Angle [°]	Alignment
		X	Y	Z		
1	LED Stadium Lamp 4x250W 20;ã_IESNA2002	-29.000	-38.500	0.000	28.3	(C 90, G IMax)
2	LED Stadium Lamp 4x250W 20;ã_IESNA2002	-21.594	-32.253	0.000	29.7	(C 90, G IMax)
3	LED Stadium Lamp 4x250W 20;ã_IESNA2002	-9.400	-20.500	0.000	29.2	(C 90, G IMax)
4	LED Stadium Lamp 4x250W 20;ã_IESNA2002	-29.000	38.500	0.000	28.3	(C 90, G IMax)



Operator  
Telephone  
Fax  
e-Mail

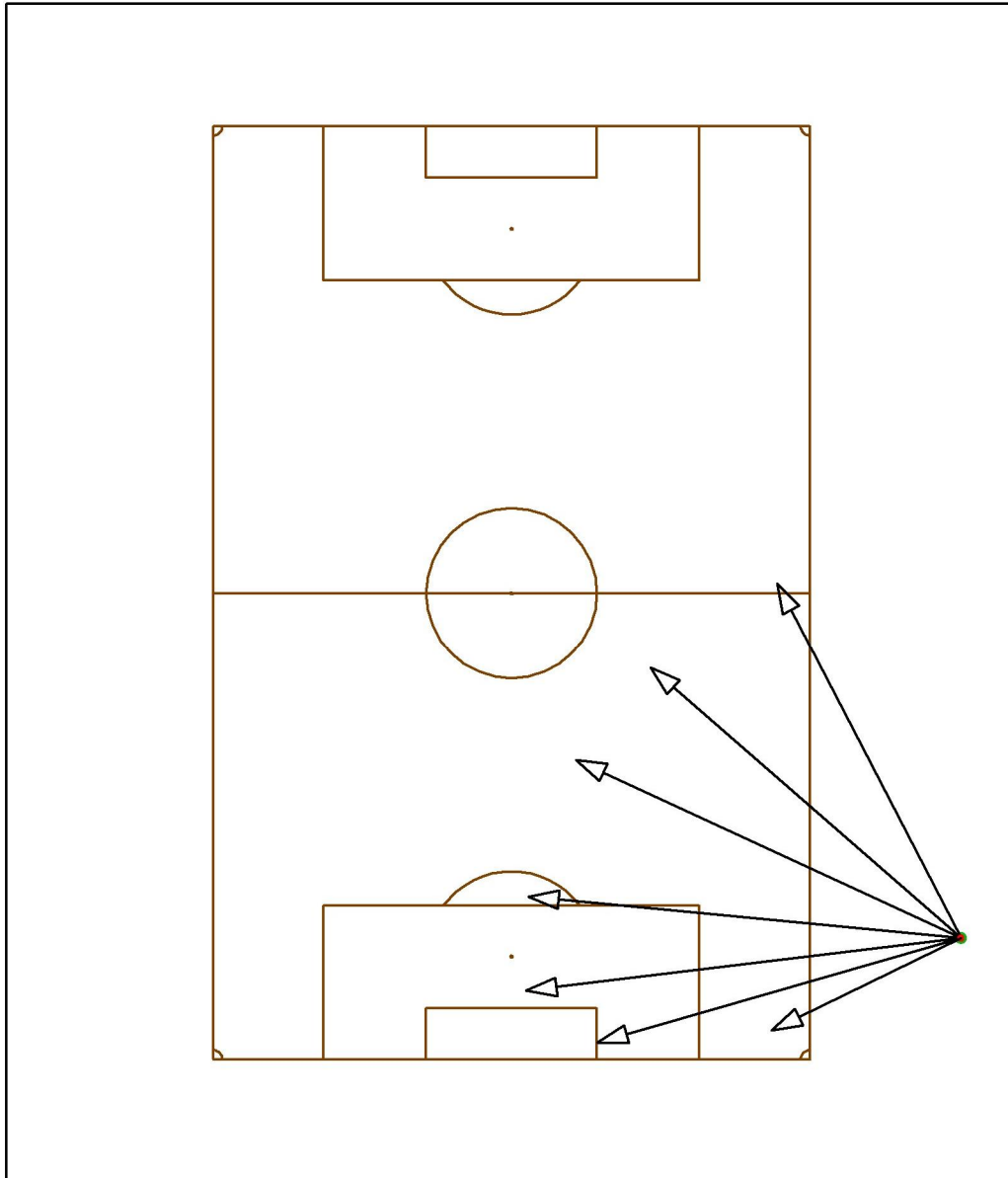
### Exterior Scene 1 / Pole Luminaires (Summary)

No.	Luminaire	Aiming Point [m]			Angle [°]	Alignment
		X	Y	Z		
5	LED Stadium Lamp 4x250W 20iã_IESNA2002	-21.594	32.253	0.000	29.7	(C 90, G IMax)
6	LED Stadium Lamp 4x250W 20iã_IESNA2002	-9.400	20.500	0.000	29.2	(C 90, G IMax)
7	LED Stadium Lamp 4x250W 20iã_IESNA2002	-6.500	0.000	0.000	31.1	(C 90, G IMax)



Operator  
Telephone  
Fax  
e-Mail

### Exterior Scene 1 / Pole Luminaires (Summary)



Position: (48.200 m, -37.000 m, 0.000 m)

No.	Luminaire	Aiming Point [m]			Angle [°]	Alignment
		X	Y	Z		
1	LED Stadium Lamp 4x250W 20;ã_IESNA2002	6.900	-17.900	0.000	25.8	(C 90, G IMax)
2	LED Stadium Lamp 4x250W 20;ã_IESNA2002	28.500	1.100	0.000	27.2	(C 90, G IMax)
3	LED Stadium Lamp 4x250W 20;ã_IESNA2002	1.581	-42.621	0.000	25.1	(C 90, G IMax)
4	LED Stadium Lamp 4x250W 20;ã_IESNA2002	14.900	-8.000	0.000	26.5	(C 90, G IMax)



Operator  
Telephone  
Fax  
e-Mail

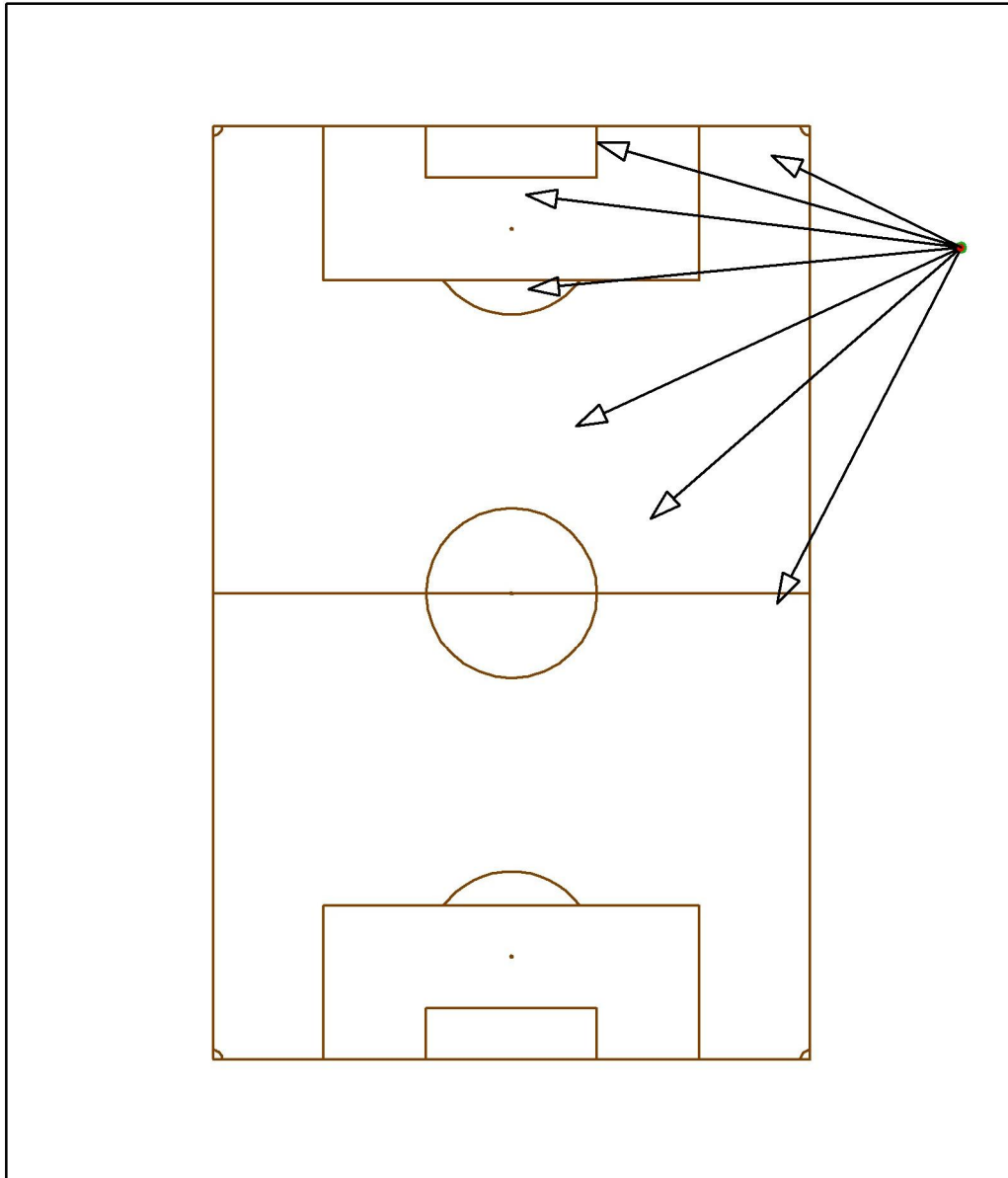
### Exterior Scene 1 / Pole Luminaires (Summary)

No.	Luminaire	Aiming Point [m]			Angle [°]	Alignment
		X	Y	Z		
5	LED Stadium Lamp 4x250W 20iã_IESNA2002	1.800	-32.558	0.000	25.3	(C 90, G IMax)
6	LED Stadium Lamp 4x250W 20iã_IESNA2002	9.204	-48.200	0.000	28.5	(C 90, G IMax)
7	LED Stadium Lamp 4x250W 20iã_IESNA2002	27.900	-46.900	0.000	44.2	(C 90, G IMax)



Operator  
 Telephone  
 Fax  
 e-Mail

### Exterior Scene 1 / Pole Luminaires (Summary)



Position: (48.200 m, 37.000 m, 0.000 m)

No.	Luminaire	Aiming Point [m]			Angle [°]	Alignment
		X	Y	Z		
1	LED Stadium Lamp 4x250W 20;ã_IESNA2002	6.900	17.900	0.000	25.8	(C 90, G IMax)
2	LED Stadium Lamp 4x250W 20;ã_IESNA2002	28.500	-1.100	0.000	27.2	(C 90, G IMax)
3	LED Stadium Lamp 4x250W 20;ã_IESNA2002	1.581	42.621	0.000	25.1	(C 90, G IMax)
4	LED Stadium Lamp 4x250W 20;ã_IESNA2002	14.900	8.000	0.000	26.5	(C 90, G IMax)



Operator  
Telephone  
Fax  
e-Mail

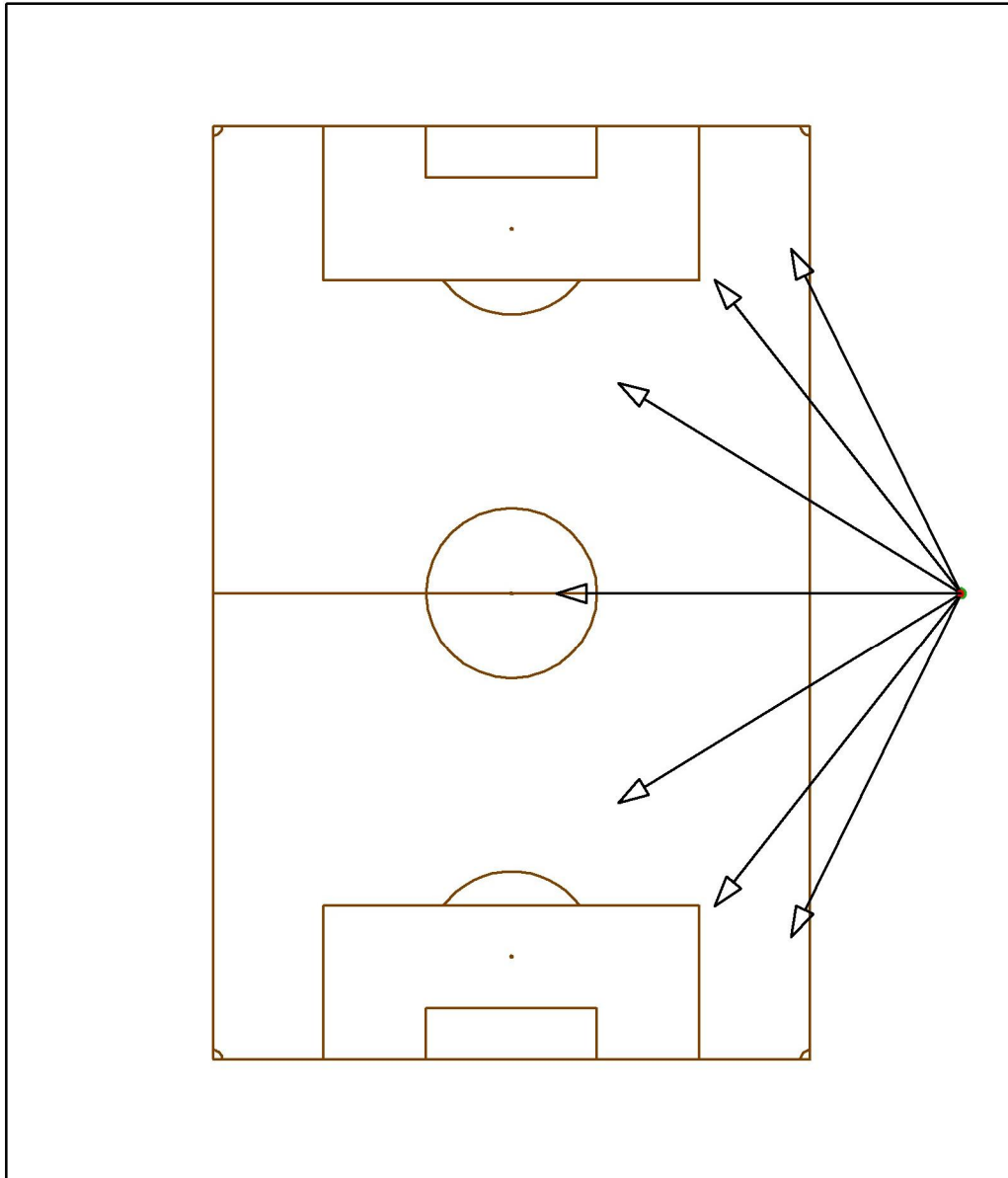
### Exterior Scene 1 / Pole Luminaires (Summary)

No.	Luminaire	Aiming Point [m]			Angle [°]	Alignment
		X	Y	Z		
5	LED Stadium Lamp 4x250W 20jã_IESNA2002	1.800	32.558	0.000	25.3	(C 90, G IMax)
6	LED Stadium Lamp 4x250W 20jã_IESNA2002	9.204	48.200	0.000	28.5	(C 90, G IMax)
7	LED Stadium Lamp 4x250W 20jã_IESNA2002	27.900	46.900	0.000	44.2	(C 90, G IMax)



Operator  
Telephone  
Fax  
e-Mail

### Exterior Scene 1 / Pole Luminaires (Summary)



Position: (48.200 m, 0.000 m, 0.000 m)

No.	Luminaire	Aiming Point [m]			Angle [°]	Alignment
		X	Y	Z		
1	LED Stadium Lamp 4x250W 20;ã_IESNA2002	30.000	-36.900	0.000	28.1	(C 90, G IMax)
2	LED Stadium Lamp 4x250W 20;ã_IESNA2002	11.431	-22.540	0.000	27.0	(C 90, G IMax)
3	LED Stadium Lamp 4x250W 20;ã_IESNA2002	21.800	-33.600	0.000	27.2	(C 90, G IMax)
4	LED Stadium Lamp 4x250W 20;ã_IESNA2002	30.000	36.900	0.000	28.1	(C 90, G IMax)



Operator  
Telephone  
Fax  
e-Mail

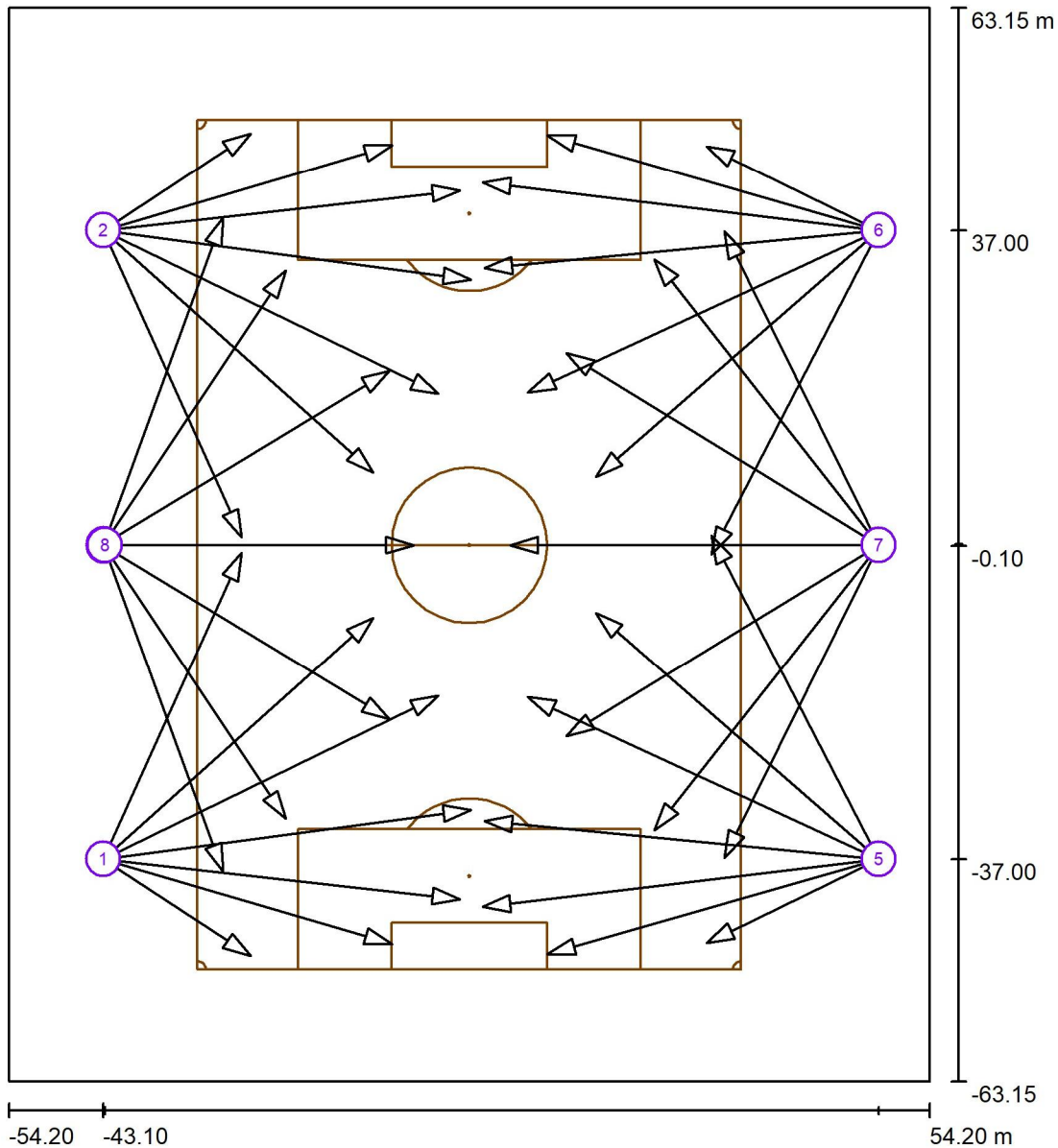
## Exterior Scene 1 / Pole Luminaires (Summary)

No.	Luminaire	Aiming Point [m]			Angle [°]	Alignment
		X	Y	Z		
5	LED Stadium Lamp 4x250W 20jã_IESNA2002	11.431	22.540	0.000	27.0	(C 90, G IMax)
6	LED Stadium Lamp 4x250W 20jã_IESNA2002	21.800	33.600	0.000	27.2	(C 90, G IMax)
7	LED Stadium Lamp 4x250W 20jã_IESNA2002	4.829	0.000	0.000	26.9	(C 90, G IMax)



Operator  
Telephone  
Fax  
e-Mail

### Exterior Scene 1 / Sport Luminaires (Coordinates List)



Scale 1 : 855

#### List of the Sport Luminaires

Luminaire	Index	Position [m]			Aiming Point [m]			Angle [°]	Alignment	Pole
		X	Y	Z	X	Y	Z			
LED Stadium Lamp 4x250W 20jã_IESNA2002	1	-43.100	-37.000	22.000	0.200	-31.200	0.000	26.7	(C 90, G IMax)	Pole Position 1
LED Stadium Lamp 4x250W 20jã_IESNA2002	1	-43.100	-37.000	22.000	-11.300	-8.529	0.000	27.3	(C 90, G IMax)	Pole Position 1
LED Stadium Lamp 4x250W 20jã_IESNA2002	1	-43.100	-37.000	22.000	-3.600	-17.800	0.000	26.6	(C 90, G IMax)	Pole Position 1
LED Stadium Lamp 4x250W 20jã_IESNA2002	1	-43.100	-37.000	22.000	-9.031	-47.012	0.000	31.8	(C 90, G IMax)	Pole Position 1



4x250W 20jã_IESNA2002 LED Stadium Lamp	6	48.200	37.000	22.000	6.900	17.900	0.000	25.8	(C 90, G IMax)	Pole Position 5
4x250W 20jã_IESNA2002 LED Stadium Lamp	6	48.200	37.000	22.000	28.500	-1.100	0.000	27.2	(C 90, G IMax)	Pole Position 5
4x250W 20jã_IESNA2002 LED Stadium Lamp	6	48.200	37.000	22.000	1.581	42.621	0.000	25.1	(C 90, G IMax)	Pole Position 5
4x250W 20jã_IESNA2002 LED Stadium Lamp	6	48.200	37.000	22.000	14.900	8.000	0.000	26.5	(C 90, G IMax)	Pole Position 5
4x250W 20jã_IESNA2002 LED Stadium Lamp	6	48.200	37.000	22.000	1.800	32.558	0.000	25.3	(C 90, G IMax)	Pole Position 5
4x250W 20jã_IESNA2002 LED Stadium Lamp	6	48.200	37.000	22.000	9.204	48.200	0.000	28.5	(C 90, G IMax)	Pole Position 5
4x250W 20jã_IESNA2002 LED Stadium Lamp	6	48.200	37.000	22.000	27.900	46.900	0.000	44.2	(C 90, G IMax)	Pole Position 5
4x250W 20jã_IESNA2002 LED Stadium Lamp	7	48.200	0.000	22.000	30.000	-36.900	0.000	28.1	(C 90, G IMax)	Pole Position 6
4x250W 20jã_IESNA2002 LED Stadium Lamp	7	48.200	0.000	22.000	11.431	-22.540	0.000	27.0	(C 90, G IMax)	Pole Position 6
4x250W 20jã_IESNA2002 LED Stadium Lamp	7	48.200	0.000	22.000	21.800	-33.600	0.000	27.2	(C 90, G IMax)	Pole Position 6
4x250W 20jã_IESNA2002 LED Stadium Lamp	7	48.200	0.000	22.000	30.000	36.900	0.000	28.1	(C 90, G IMax)	Pole Position 6
4x250W 20jã_IESNA2002 LED Stadium Lamp	7	48.200	0.000	22.000	11.431	22.540	0.000	27.0	(C 90, G IMax)	Pole Position 6
4x250W 20jã_IESNA2002 LED Stadium Lamp	7	48.200	0.000	22.000	21.800	33.600	0.000	27.2	(C 90, G IMax)	Pole Position 6



Operator  
Telephone  
Fax  
e-Mail

## Exterior Scene 1 / Sport Luminaires (Coordinates List)

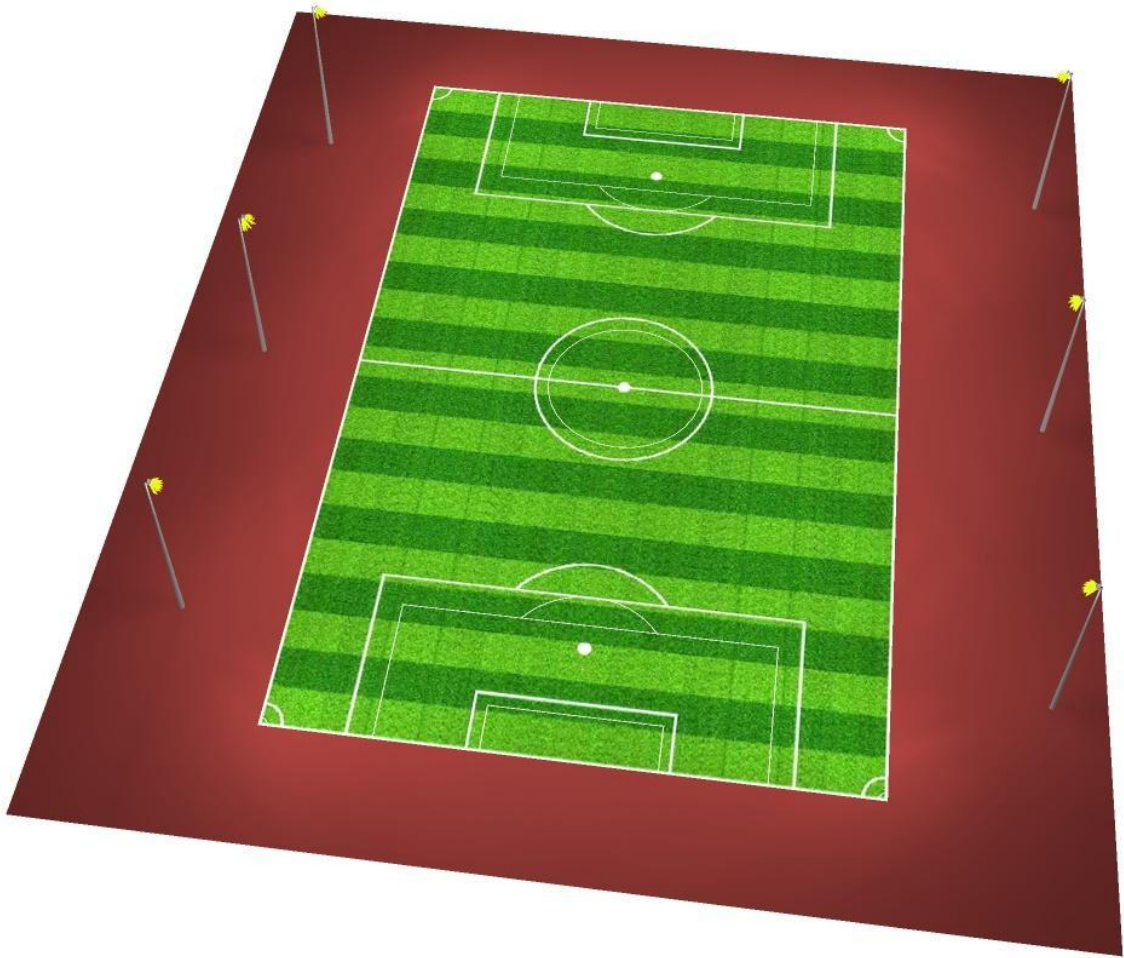
### List of the Sport Luminaires

Luminaire	Index	Position [m]			Aiming Point [m]			Angle [°]	Alignment	Pole
		X	Y	Z	X	Y	Z			
LED Stadium Lamp 4x250W 20iã_IESNA2002	8	-42.900	0.000	22.000	-6.500	0.000	0.000	31.1	(C 90, G IMax)	Pole Position 3
LED Stadium Lamp 4x250W 20iã_IESNA2002	7	48.200	0.000	22.000	4.829	0.000	0.000	26.9	(C 90, G IMax)	Pole Position 6



Operator  
Telephone  
Fax  
e-Mail

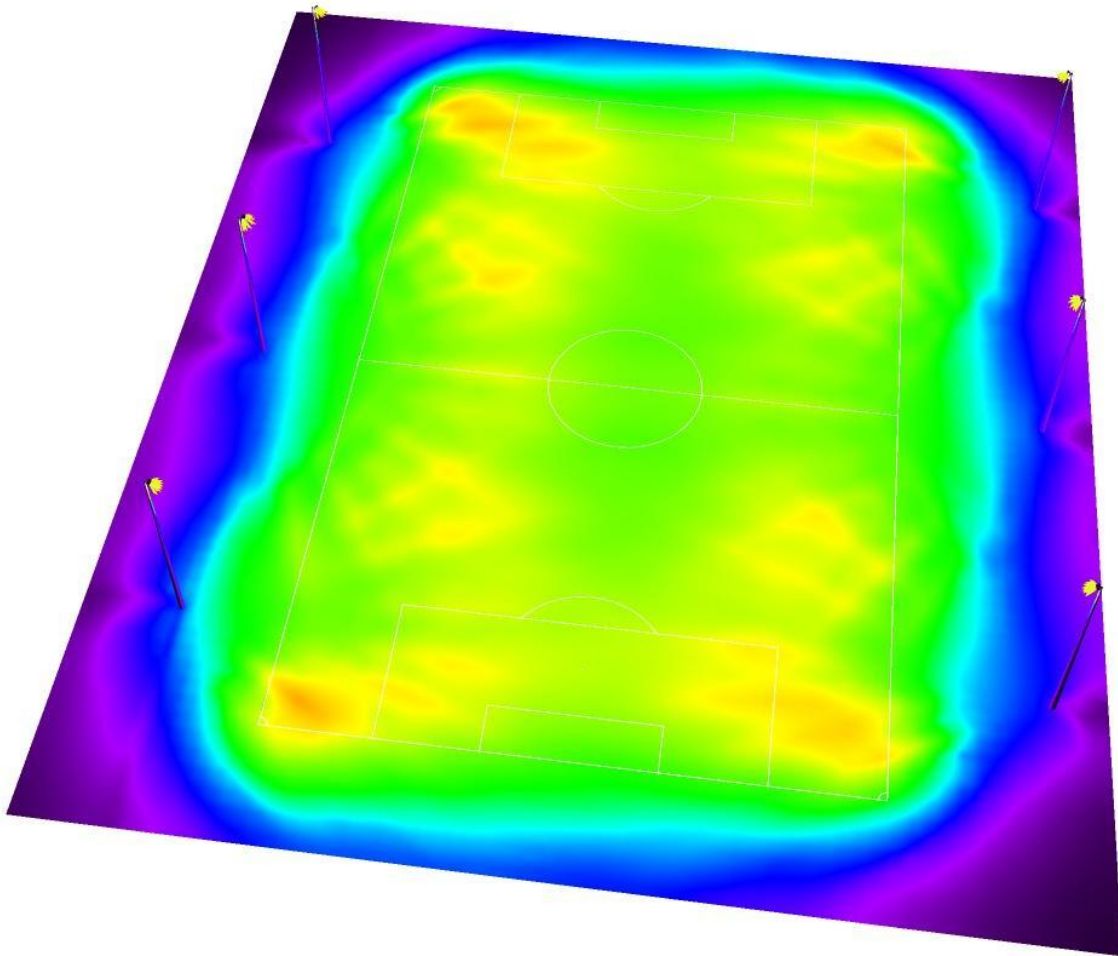
Exterior Scene 1 / 3D Rendering





Operator  
Telephone  
Fax  
e-Mail

## Exterior Scene 1 / False Color Rendering



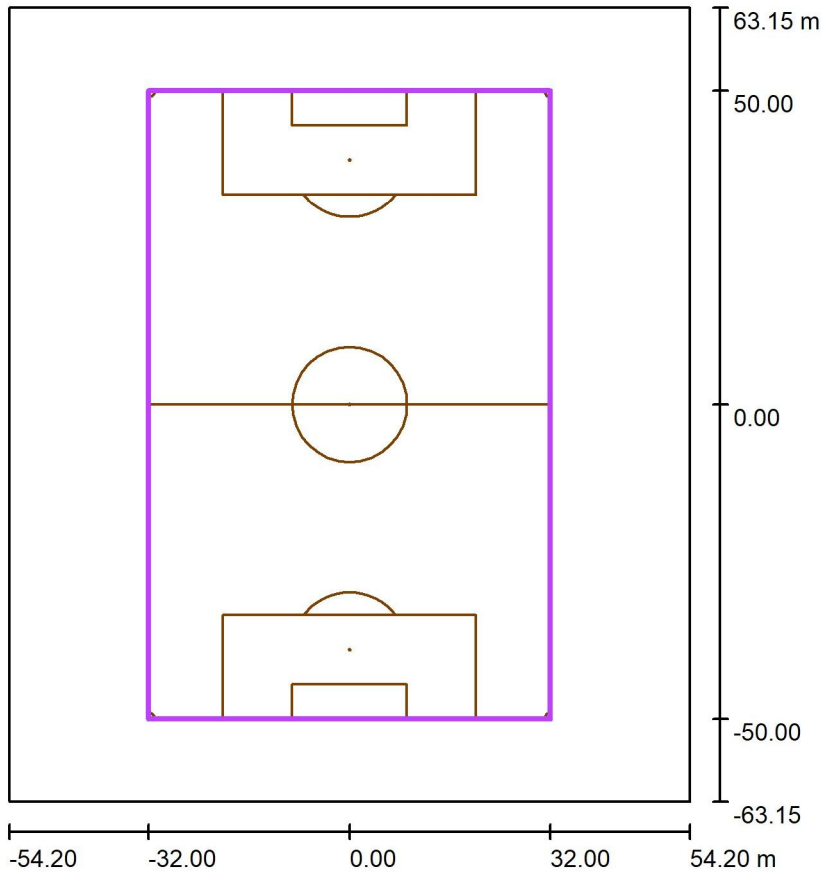
0      50      100      200      300      600      800      900      1200

lx



Operator  
Telephone  
Fax  
e-Mail

### Exterior Scene 1 / Soccer Field 1 Calculation Grid (PA) / Summary



Scale 1 : 1205

Position: (0.000 m, 0.000 m, 0.000 m)  
 Size: (100.000 m, 64.000 m)  
 Rotation: (0.0°, 0.0°, -90.0°)  
 Type: Normal, Grid: 19 x 13 Points  
 Belongs to the following sport arena: Soccer Field 1

#### Results overview

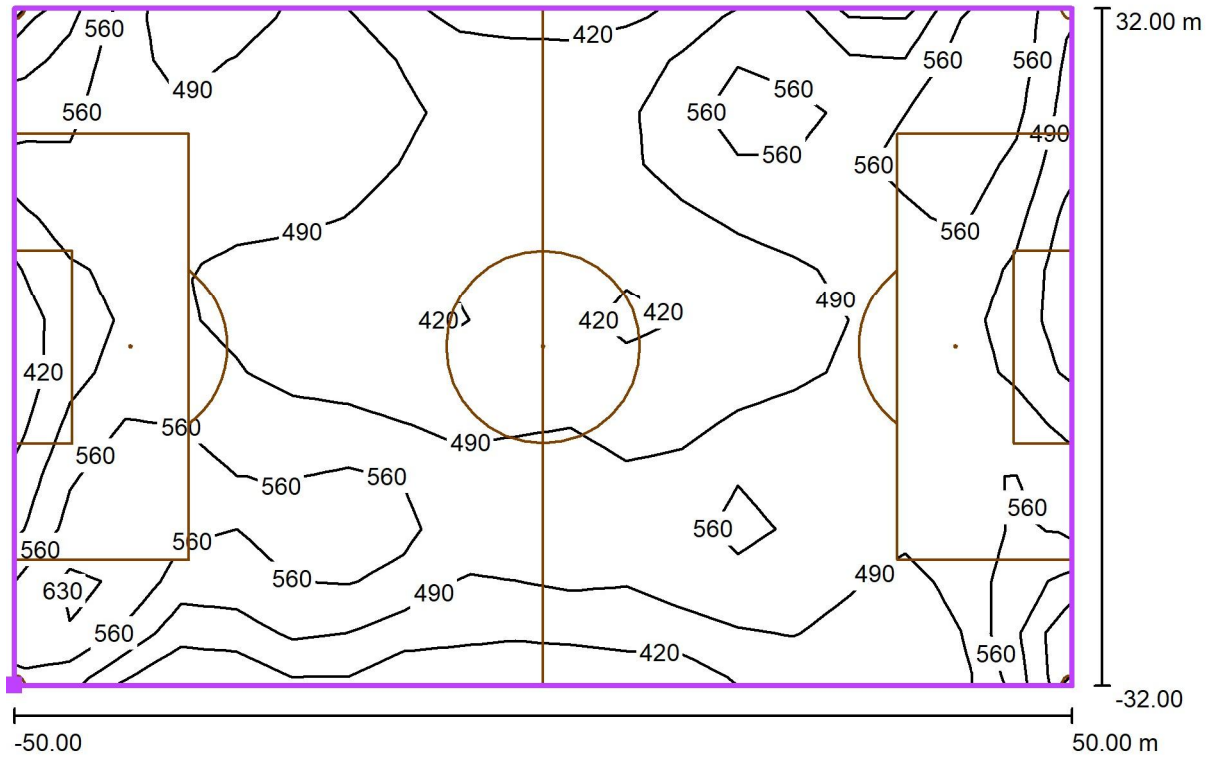
No.	Type	$E_{av}$ [lx]	$E_{min}$ [lx]	$E_{max}$ [lx]	u0	$E_{min} / E_{max}$	$E_{h\ m} / E_m$	H [m]	Camera
1	perpendicular	506	394	714	0.78	0.55	/	0.000	/

$E_{h\ m} / E_m$  = Relationship between middle horizontal and vertical illuminance, H = Measuring Height



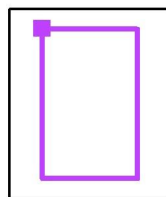
Operator  
Telephone  
Fax  
e-Mail

**Exterior Scene 1 / Soccer Field 1 Calculation Grid (PA) / Isolines (E, Perpendicular)**



Values in Lux, Scale 1 : 715

Position of surface in external scene:  
Marked point: (-32.000 m, 50.000 m, 0.000 m)



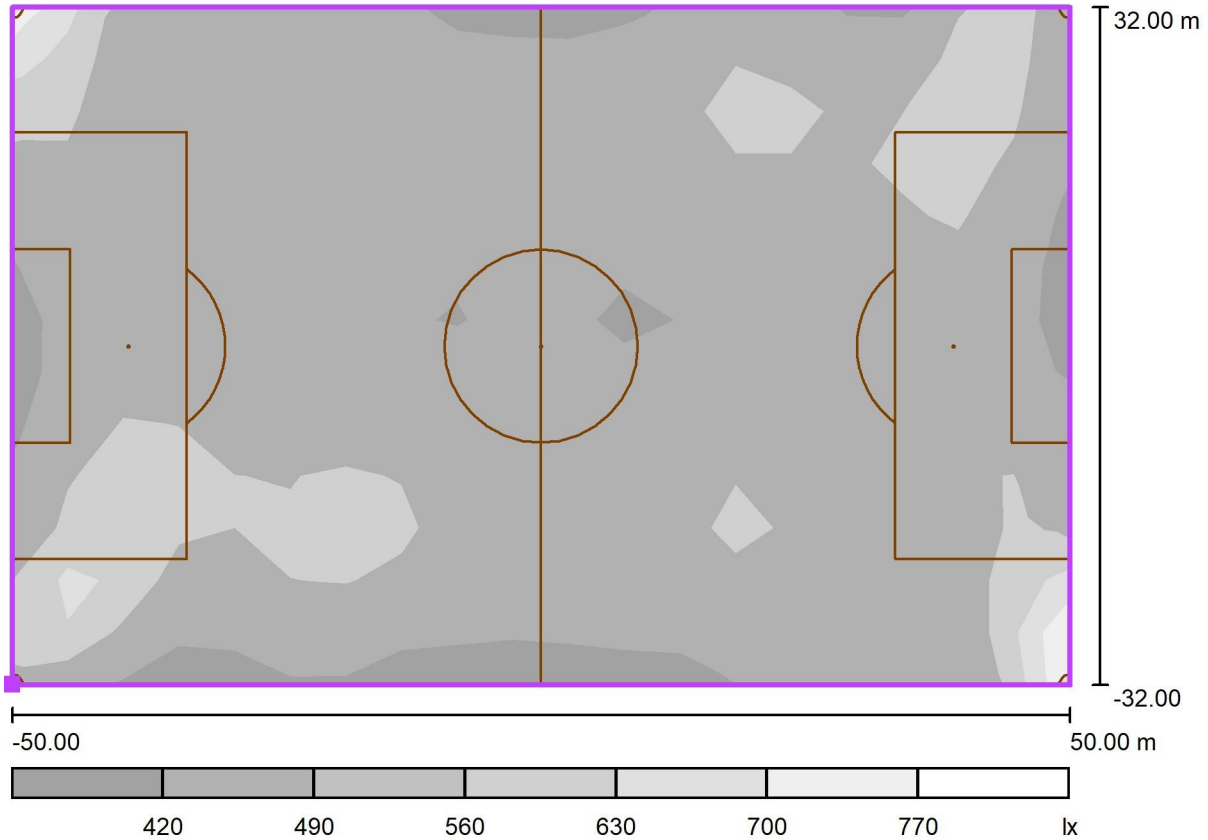
Grid: 19 x 13 Points

$E_{av}$ [lx]	$E_{min}$ [lx]	$E_{max}$ [lx]	$u_0$	$E_{min} / E_{max}$
506	394	714	0.78	0.55



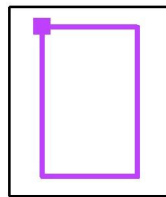
Operator  
Telephone  
Fax  
e-Mail

**Exterior Scene 1 / Soccer Field 1 Calculation Grid (PA) / Greyscale (E, Perpendicular)**



Scale 1 : 715

Position of surface in external scene:  
Marked point: (-32.000 m, 50.000 m, 0.000 m)



Grid: 19 x 13 Points

$E_{av}$  [lx]  
506

$E_{min}$  [lx]  
394

$E_{max}$  [lx]  
714

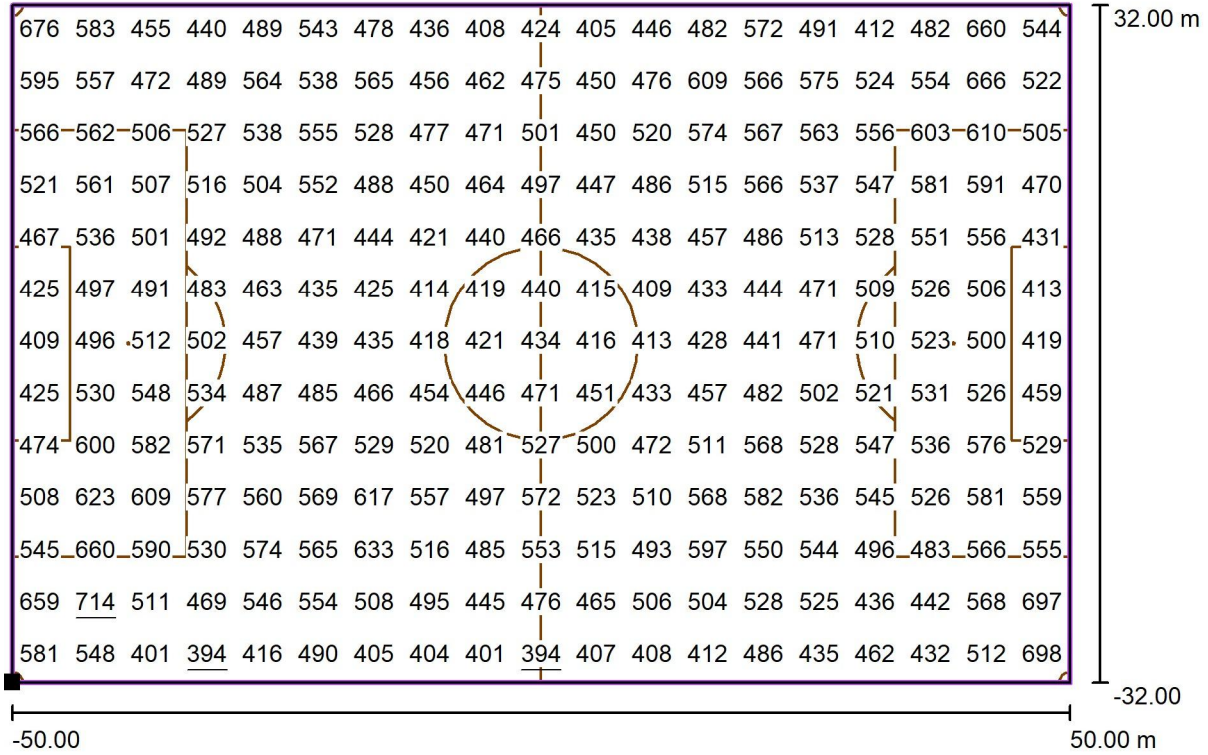
$u_0$   
0.78

$E_{min} / E_{max}$   
0.55



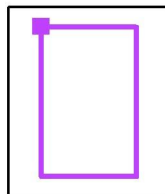
Operator  
Telephone  
Fax  
e-Mail

**Exterior Scene 1 / Soccer Field 1 Calculation Grid (PA) / Value Chart (E, Perpendicular)**



Values in Lux, Scale 1 : 715

Position of surface in external scene:  
Marked point: (-32.000 m, 50.000 m, 0.000 m)



Grid: 19 x 13 Points

$E_{av}$  [lx]  
506

$E_{min}$  [lx]  
394

$E_{max}$  [lx]  
714

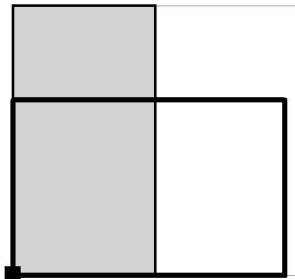
u0  
0.78

$E_{min} / E_{max}$   
0.55



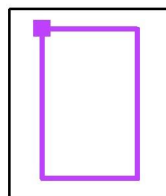
Operator  
Telephone  
Fax  
e-Mail

**Exterior Scene 1 / Soccer Field 1 Calculation Grid (PA) / Table (E, Perpendicular)**



Current Selection  
 Further Selections

Position of surface in external scene:  
Marked point: (-32.000 m, 50.000 m, 0.000 m)



<b>61.538</b>	676	583	455	440	489	543	478	436	408	424
<b>56.615</b>	595	557	472	489	564	538	565	456	462	475
<b>51.692</b>	566	562	506	527	538	555	528	477	471	501
<b>46.769</b>	521	561	507	516	504	552	488	450	464	497
<b>41.846</b>	467	536	501	492	488	471	444	421	440	466
<b>36.923</b>	425	497	491	483	463	435	425	414	419	440
<b>32.000</b>	409	496	512	502	457	439	435	418	421	434
<b>27.077</b>	425	530	548	534	487	485	466	454	446	471
<b>22.154</b>	474	600	582	571	535	567	529	520	481	527
<b>17.231</b>	508	623	609	577	560	569	617	557	497	572
<b>12.308</b>	545	660	590	530	574	565	633	516	485	553
<b>7.385</b>	659	<u>714</u>	511	469	546	554	508	495	445	476
<b>2.462</b>	581	548	401	<u>394</u>	416	490	405	404	401	<u>394</u>
<b>m</b>	<b>2.632</b>	<b>7.895</b>	<b>13.158</b>	<b>18.421</b>	<b>23.684</b>	<b>28.947</b>	<b>34.211</b>	<b>39.474</b>	<b>44.737</b>	<b>50.000</b>

Attention: The coordinates refer to the image above. Values in Lux.

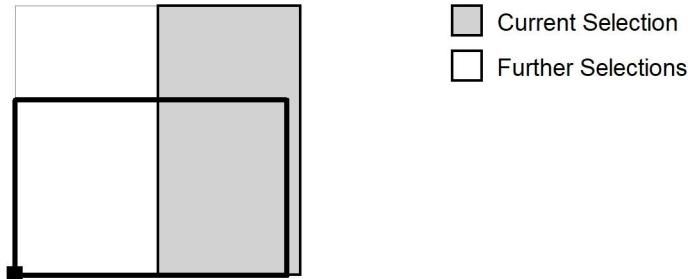
Grid: 19 x 13 Points

$E_{av}$ [lx]	$E_{min}$ [lx]	$E_{max}$ [lx]	u0	$E_{min} / E_{max}$
506	394	714	0.78	0.55

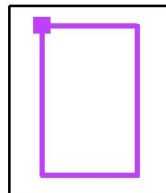


Operator  
Telephone  
Fax  
e-Mail

**Exterior Scene 1 / Soccer Field 1 Calculation Grid (PA) / Table (E, Perpendicular)**



Position of surface in external scene:  
Marked point: (-32.000 m, 50.000 m, 0.000 m)



<b>61.538</b>	405	446	482	572	491	412	482	660	544
<b>56.615</b>	450	476	609	566	575	524	554	666	522
<b>51.692</b>	450	520	574	567	563	556	603	610	505
<b>46.769</b>	447	486	515	566	537	547	581	591	470
<b>41.846</b>	435	438	457	486	513	528	551	556	431
<b>36.923</b>	415	409	433	444	471	509	526	506	413
<b>32.000</b>	416	413	428	441	471	510	523	500	419
<b>27.077</b>	451	433	457	482	502	521	531	526	459
<b>22.154</b>	500	472	511	568	528	547	536	576	529
<b>17.231</b>	523	510	568	582	536	545	526	581	559
<b>12.308</b>	515	493	597	550	544	496	483	566	555
<b>7.385</b>	465	506	504	528	525	436	442	568	697
<b>2.462</b>	407	408	412	486	435	462	432	512	698
<b>m</b>	<b>55.263</b>	<b>60.526</b>	<b>65.789</b>	<b>71.053</b>	<b>76.316</b>	<b>81.579</b>	<b>86.842</b>	<b>92.105</b>	<b>97.368</b>

Attention: The coordinates refer to the image above. Values in Lux.

Grid: 19 x 13 Points

$E_{av}$ [lx]	$E_{min}$ [lx]	$E_{max}$ [lx]	u0	$E_{min} / E_{max}$
506	394	714	0.78	0.55