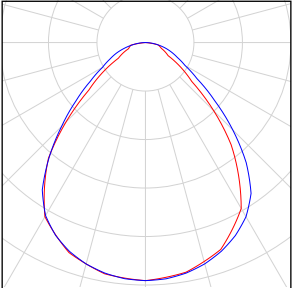


## Classroom Lighting Simulation Caculation-0508

## Content

Classroom Lighting Simulation Calculation-0508	
Luminaire list.....	3
Views.....	4
Site 1	
Building 1	
Storey 1	
ClassRoom 1	
Summary.....	12
Workplane (ClassRoom 1) / Perpendicular illuminance (adaptive).....	13
ClassRoom 10	
Summary.....	17
Workplane (ClassRoom 10) / Perpendicular illuminance (adaptive).....	18
ClassRoom 2	
Summary.....	22
Workplane (ClassRoom 2) / Perpendicular illuminance (adaptive).....	23
ClassRoom 3	
Summary.....	27
Workplane (ClassRoom 3) / Perpendicular illuminance (adaptive).....	28
ClassRoom 4	
Summary.....	32
Workplane (ClassRoom 4) / Perpendicular illuminance (adaptive).....	33
ClassRoom 5	
Summary.....	37
Workplane (ClassRoom 5) / Perpendicular illuminance (adaptive).....	38
ClassRoom 6	
Summary.....	42
Workplane (ClassRoom 6) / Perpendicular illuminance (adaptive).....	43
ClassRoom 7	
Summary.....	47
Workplane (ClassRoom 7) / Perpendicular illuminance (adaptive).....	48
ClassRoom 8	
Summary.....	52
Workplane (ClassRoom 8) / Perpendicular illuminance (adaptive).....	53
ClassRoom 9	
Summary.....	57
Workplane (ClassRoom 9) / Perpendicular illuminance (adaptive).....	58

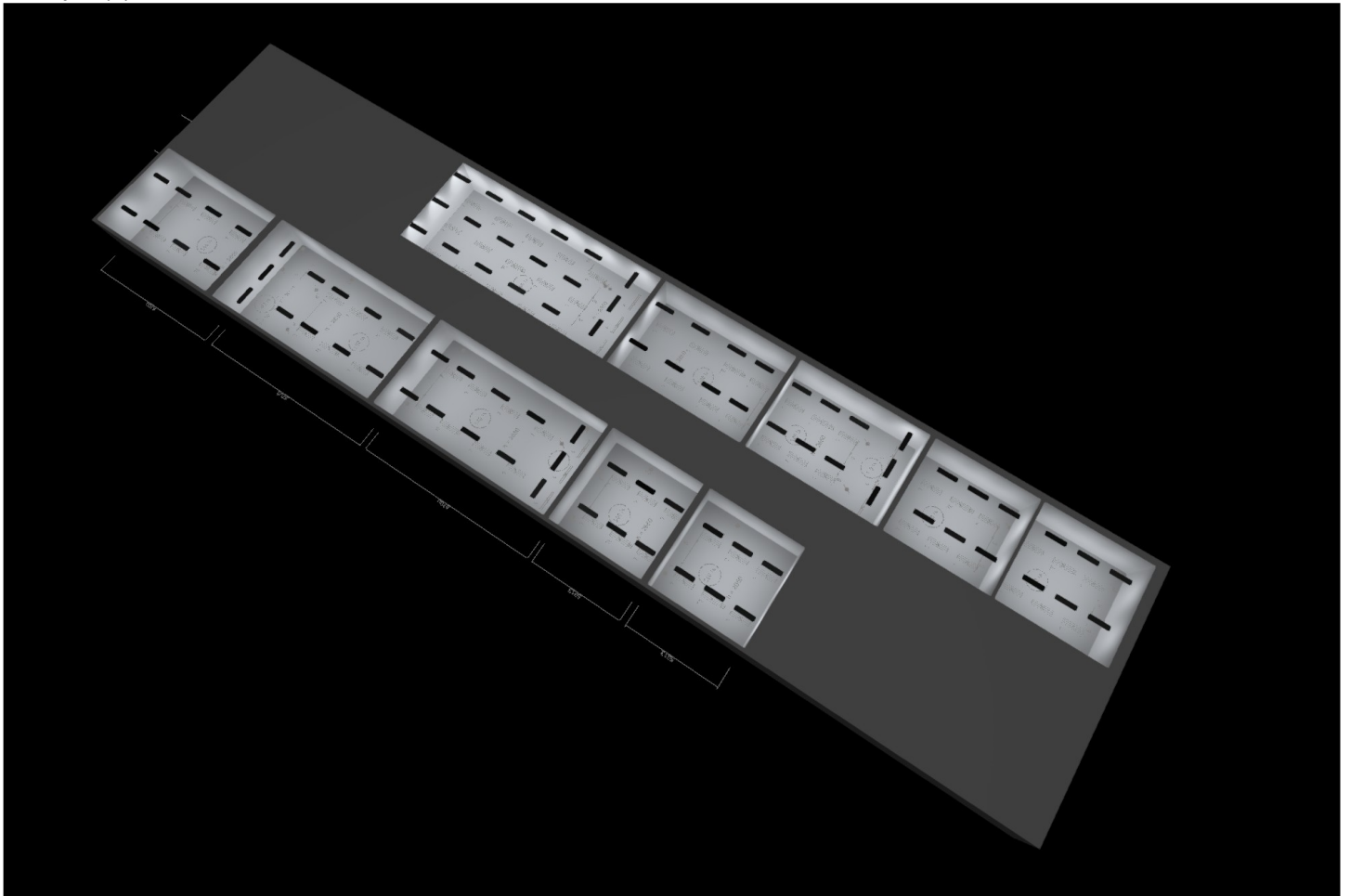
## Classroom Lighting Simulation Calculation-0508

Quantity	Luminaire (Luminous emittance)		
89	DIALux - Luminous emittance 1 Fitting: 1x Light output ratio: 100.07% Lamp luminous flux: 3653 lm Luminaire luminous flux: 3656 lm Power: 26.1 W Luminous efficacy: 140.1 lm/W  Colorimetric data 1x: CCT 4000 K, CRI 100	See our luminaire catalog for an image of the luminaire.	

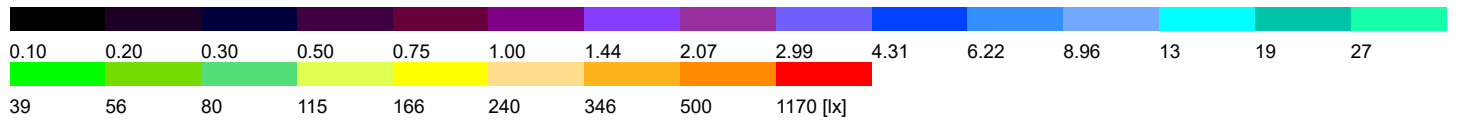
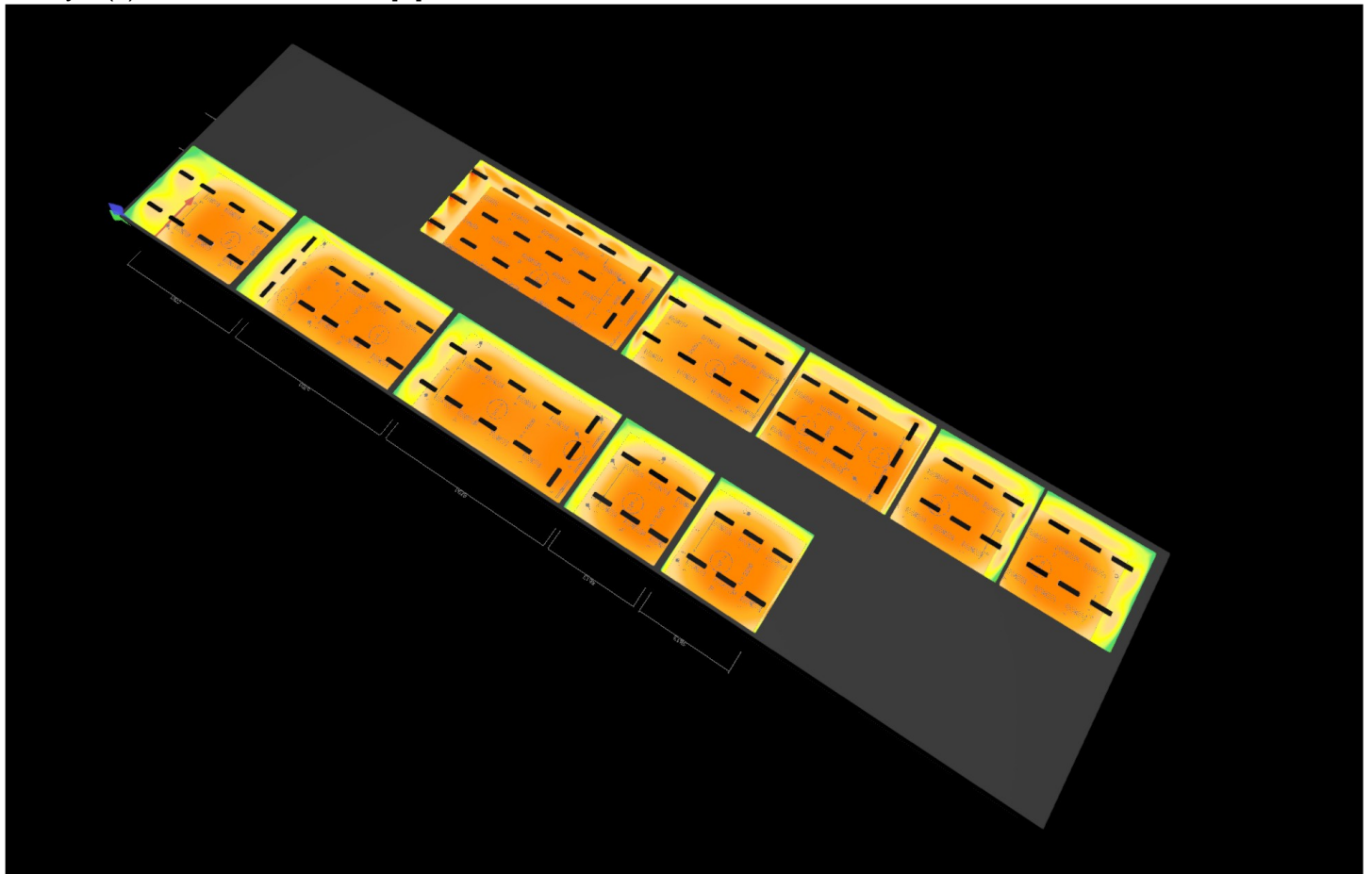
Total lamp luminous flux: 325117 lm, Total luminaire luminous flux: 325384 lm, Total Load: 2322.9 W, Luminous efficacy: 140.1 lm/W

## Classroom Lighting Simulation Calculation-0508

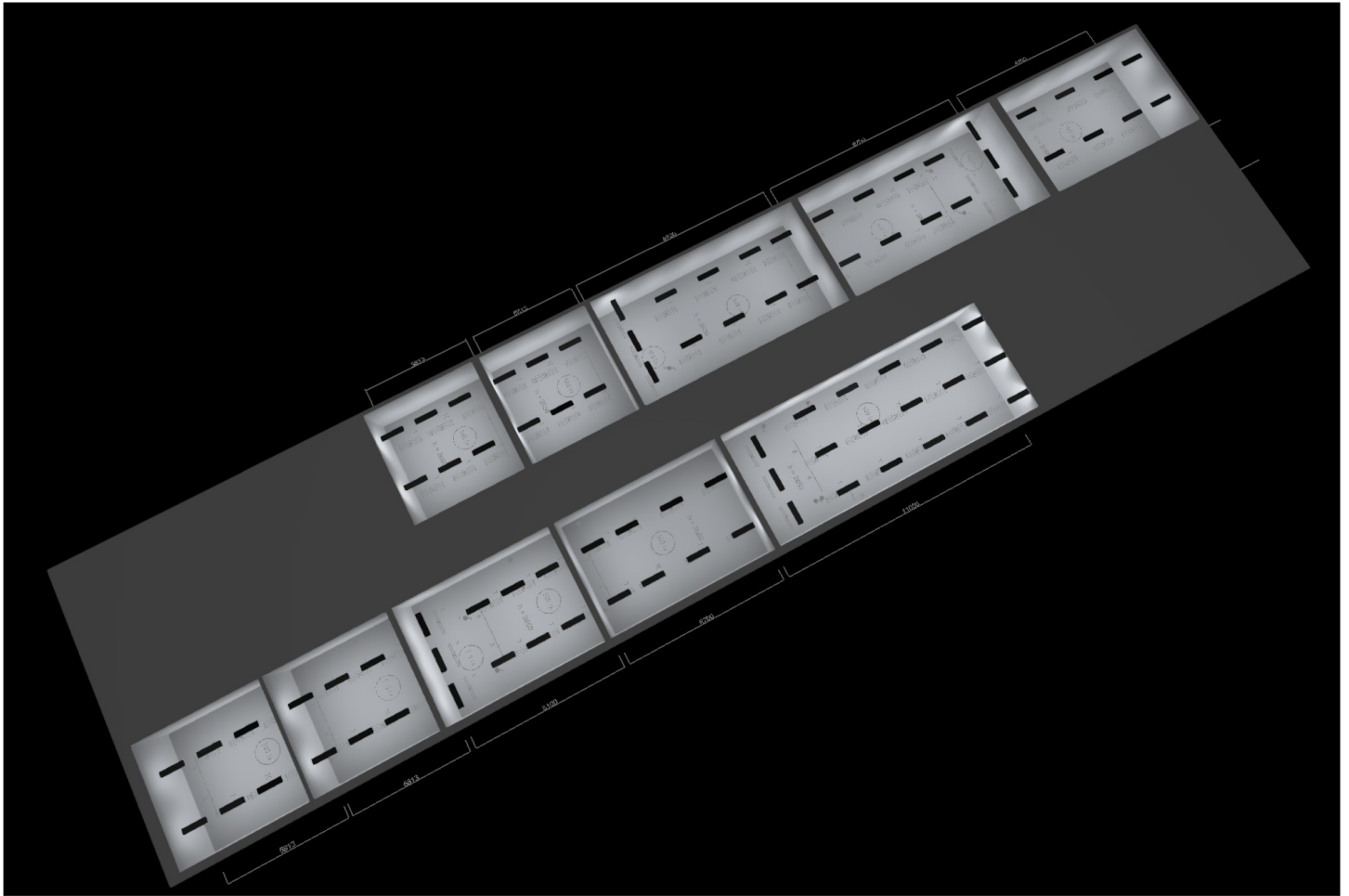
Storey 1 (2)



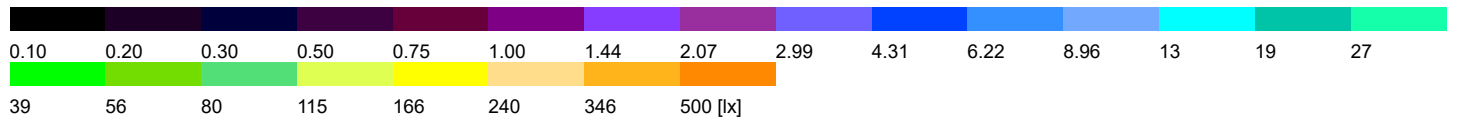
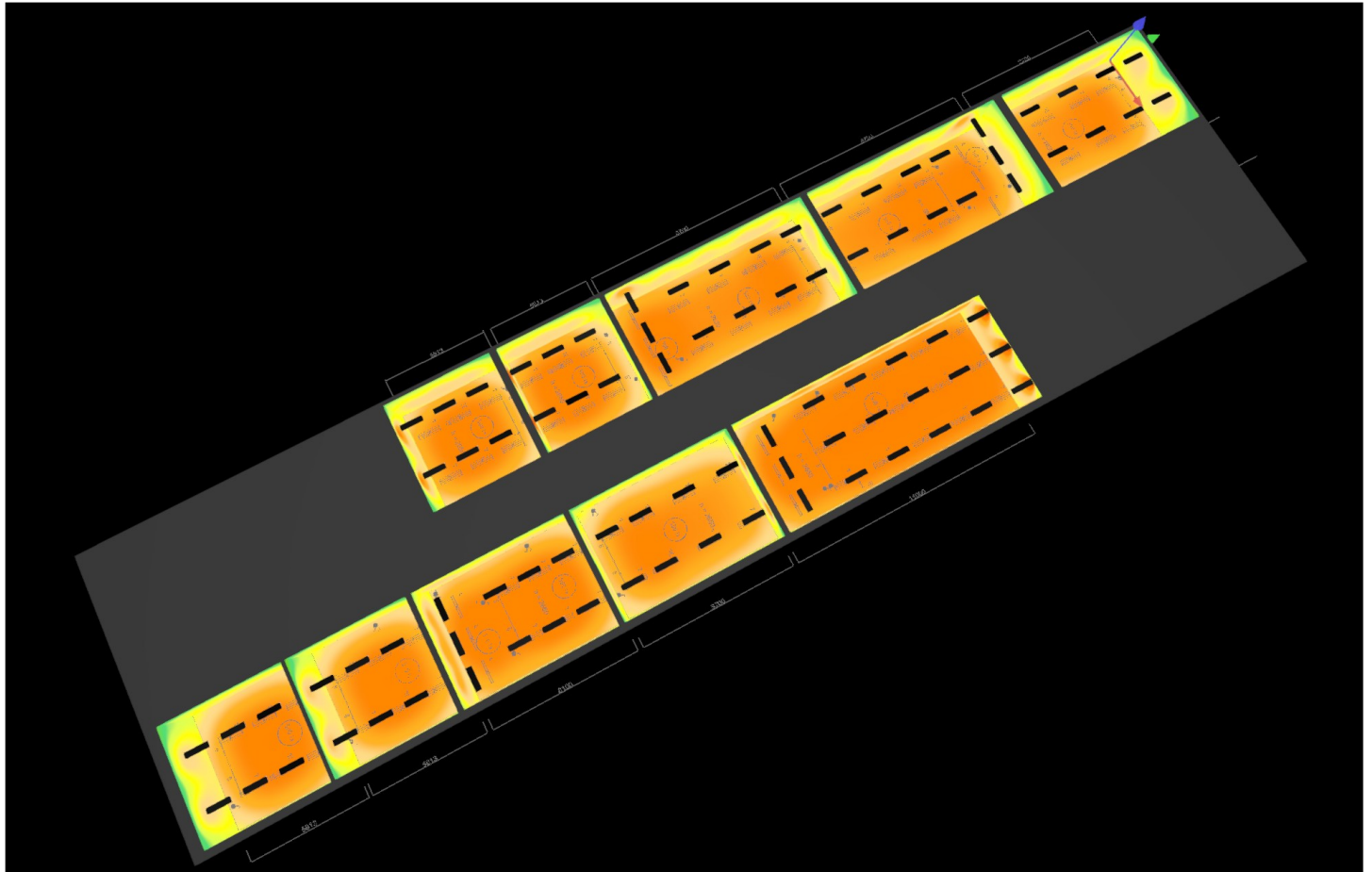
## Storey 1 (3), Illuminance values in [lx]



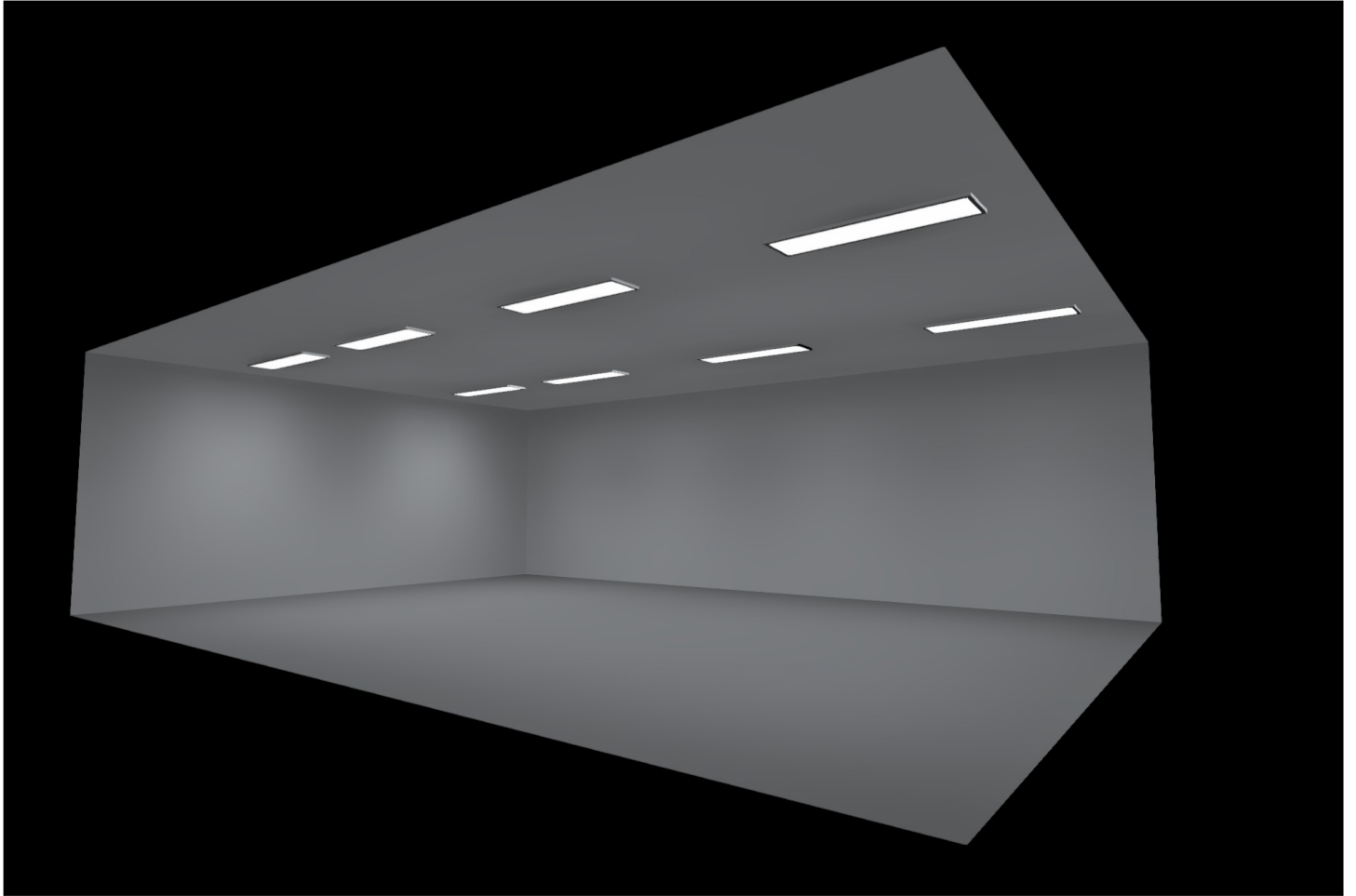
## Storey 1 (5)



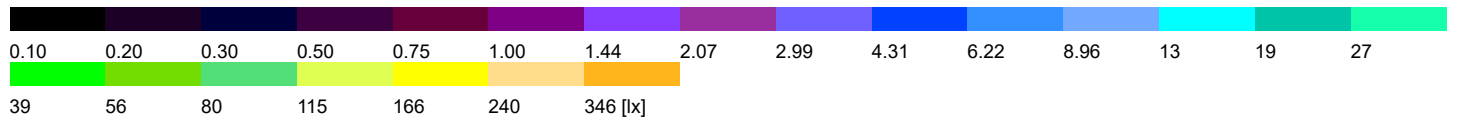
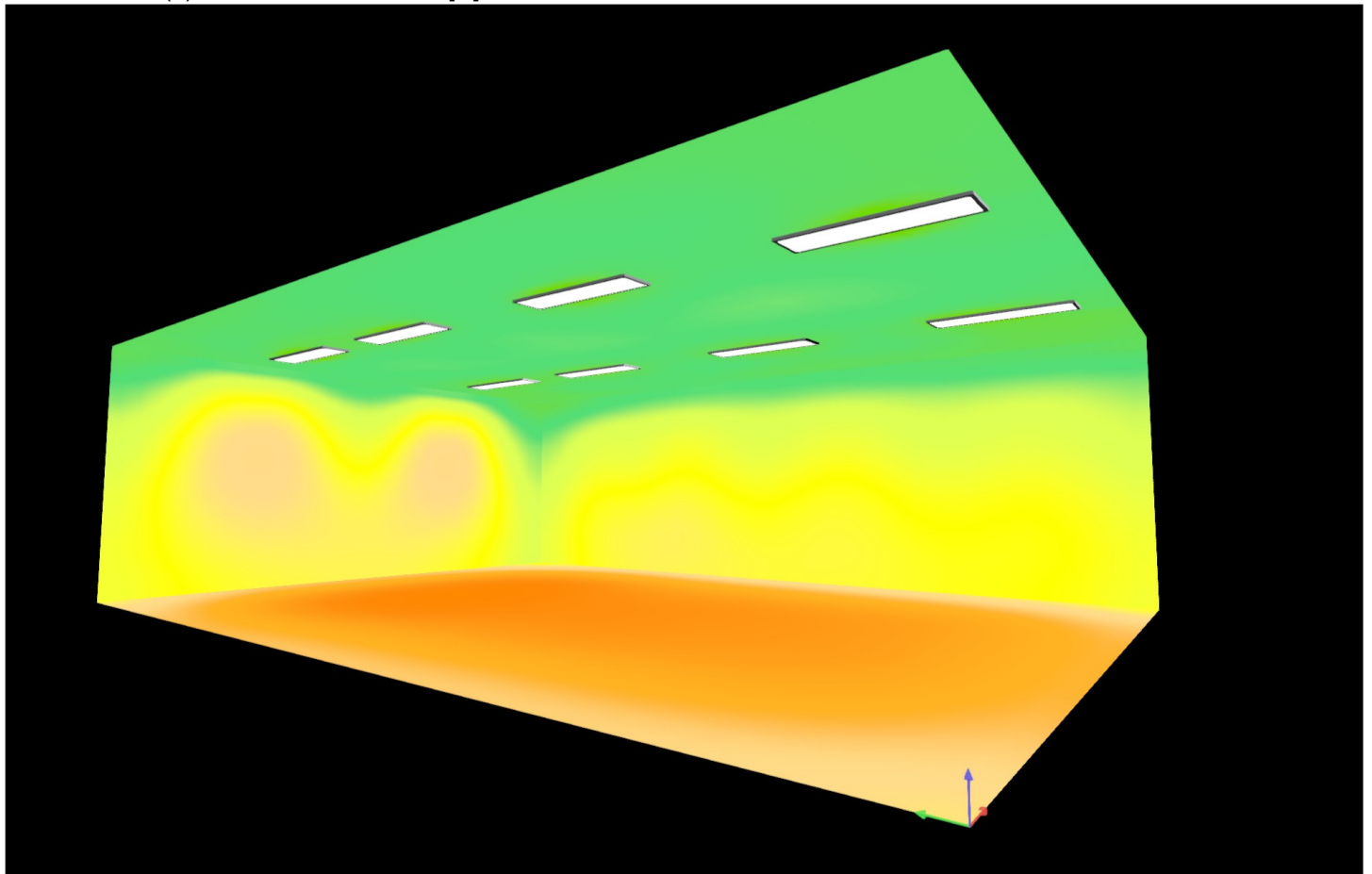
## Storey 1 (4), Illuminance values in [lx]



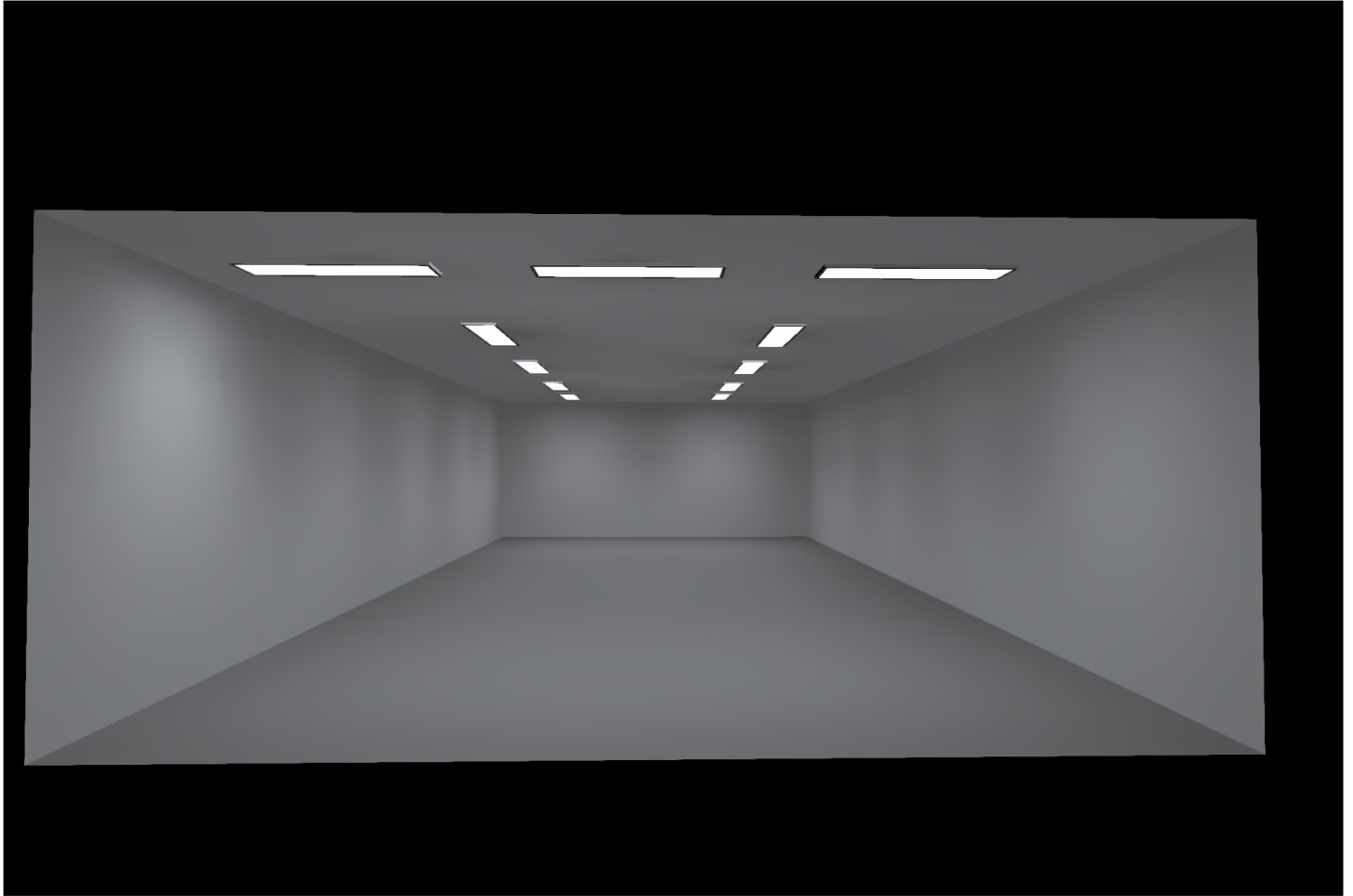
## ClassRoom 1 (6)



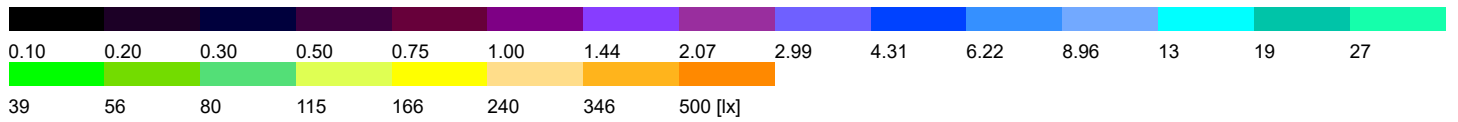
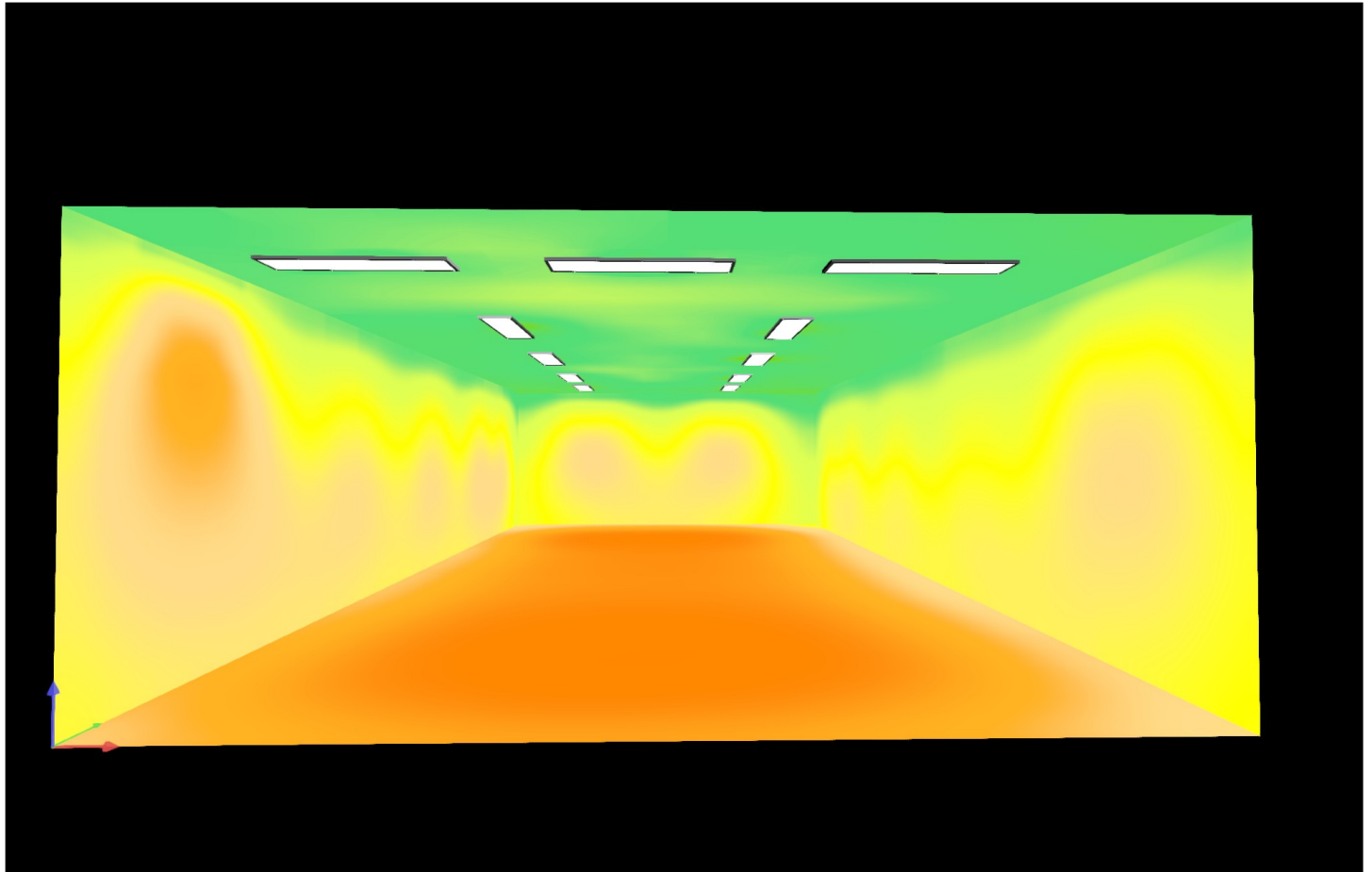
## ClassRoom 1 (7), Illuminance values in [lx]



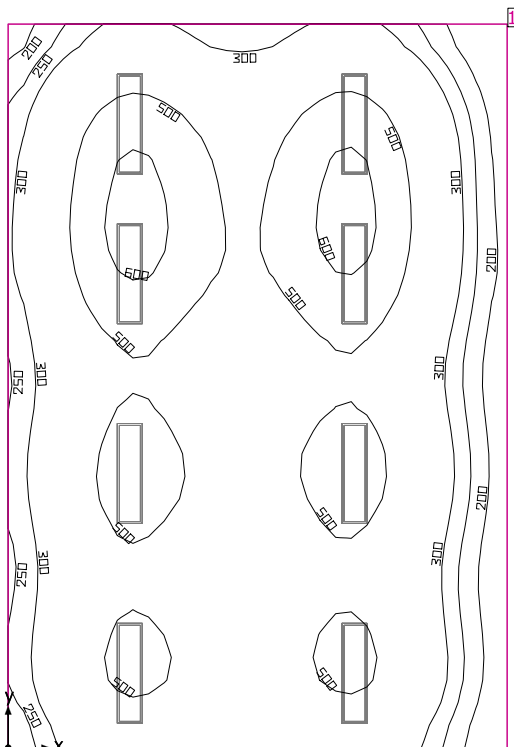
## ClassRoom 3 (9)



## ClassRoom 3 (8), Illuminance values in [lx]



## ClassRoom 1



Clearance height: 2.650 m, Reflection factors: Ceiling 70.0%, Walls 50.0%, Floor 20.0%, Light loss factor: 0.80

### Workplane

Surface	Result	Average (Target)	Min	Max	Min/average	Min/max
1 Workplane (ClassRoom 1)	Perpendicular illuminance (adaptive) [lx] Height: 0.800 m, Wall zone: 0.000 m	419 (≥ 500)	131	628	0.31	0.21

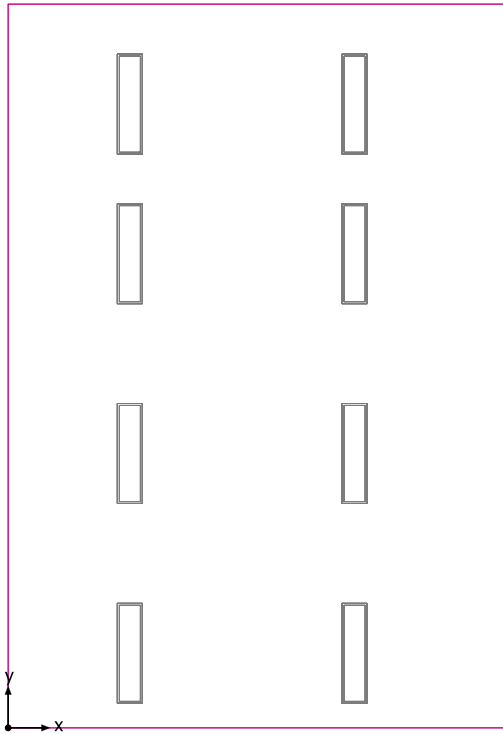
# Luminaire	Φ(Luminaire) [lm]	Power [W]	Luminous efficacy [lm/W]
8 DIALux -	3656	26.1	140.1
<b>Total via all luminaires</b>	<b>29248</b>	<b>208.8</b>	<b>140.1</b>

Lighting power density: 4.00 W/m<sup>2</sup> = 0.96 W/m<sup>2</sup>/100 lx (Floor area of room 52.14 m<sup>2</sup>)

Consumption: 570 kWh/a of maximum 1850 kWh/a

The energy consumption quantities do not take into account light scenes and their dimming levels.

## Workplane (ClassRoom 1) / Perpendicular illuminance (adaptive)



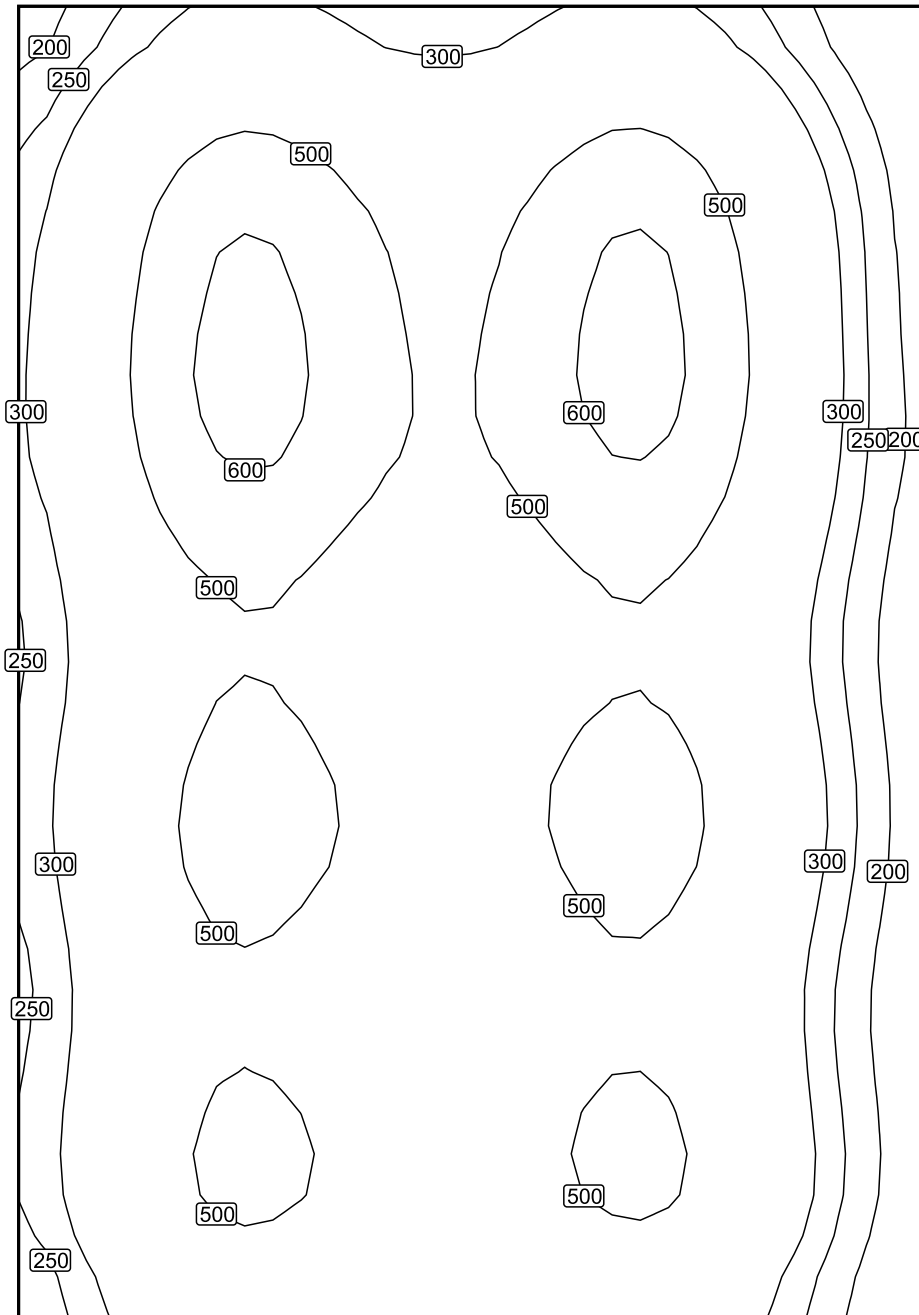
Workplane (ClassRoom 1): Perpendicular illuminance (adaptive) (Surface)

Light scene: Light scene 1

Average: 419 lx (Target:  $\geq 500$  lx), Min: 131 lx, Max: 628 lx, Min/average: 0.31, Min/max: 0.21

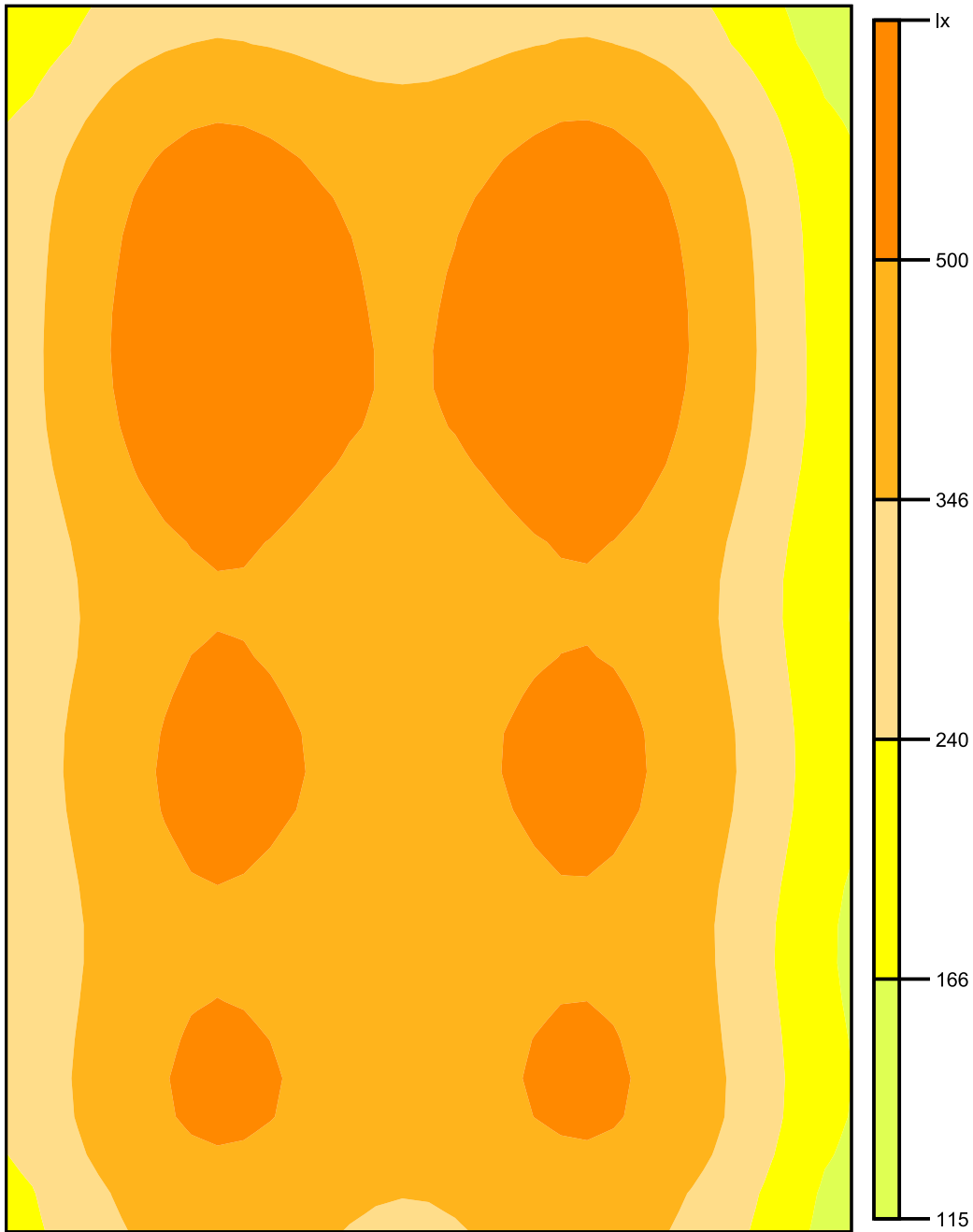
Height: 0.800 m, Wall zone: 0.000 m

## Isolines [lx]



Scale: 1 : 50

## False colors [lx]



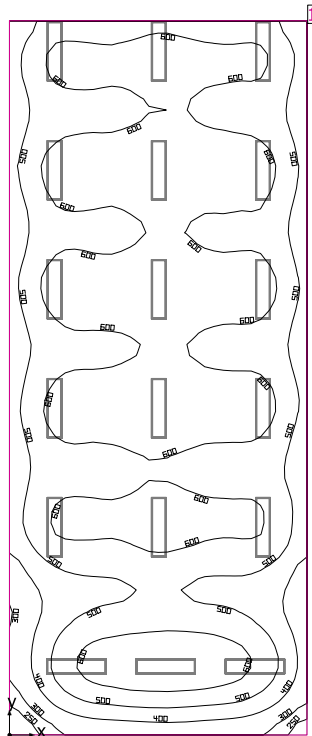
Scale: 1 : 50

## Value grid [lx]

+260	+388	+360	+325	+392	+344	+188
+365	+564	+519	+460	+570	+491	+253
+397	+614	+561	+493	+616	+536	+268
+387	+588	+542	+486	+586	+510	+265
+334	+493	+462	+417	+495	+435	+232
+335	+507	+473	+427	+508	+444	+237
+348	+528	+491	+445	+528	+460	+244
+317	+478	+437	+392	+477	+417	+217
+333	+509	+470	+420	+513	+439	+227
+301	+458	+422	+376	+455	+395	+208

Scale: 1 : 50

## ClassRoom 10



Clearance height: 2.650 m, Reflection factors: Ceiling 70.0%, Walls 50.0%, Floor 20.0%, Light loss factor: 0.80

## Workplane

Surface	Result	Average (Target)	Min	Max	Min/average	Min/max
1 Workplane (ClassRoom 10)	Perpendicular illuminance (adaptive) [lx] Height: 0.800 m, Wall zone: 0.000 m	563 (≥ 500)	201	684	0.36	0.29

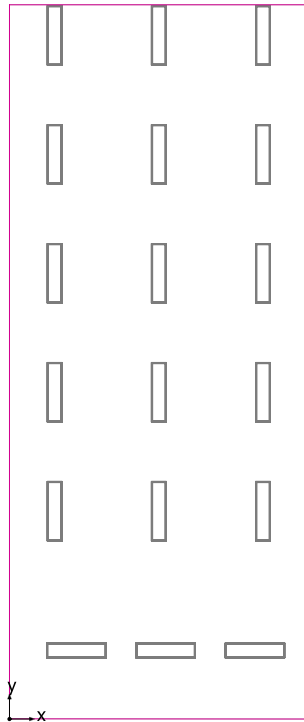
#	Luminaire	Φ(Luminaire) [lm]	Power [W]	Luminous efficacy [lm/W]
18	DIALux -	3656	26.1	140.1
Total via all luminaires		65808	469.8	140.1

Lighting power density:  $5.44 \text{ W/m}^2 = 0.97 \text{ W/m}^2/100 \text{ lx}$  (Floor area of room  $86.30 \text{ m}^2$ )

Consumption: 1300 kWh/a of maximum 3050 kWh/a

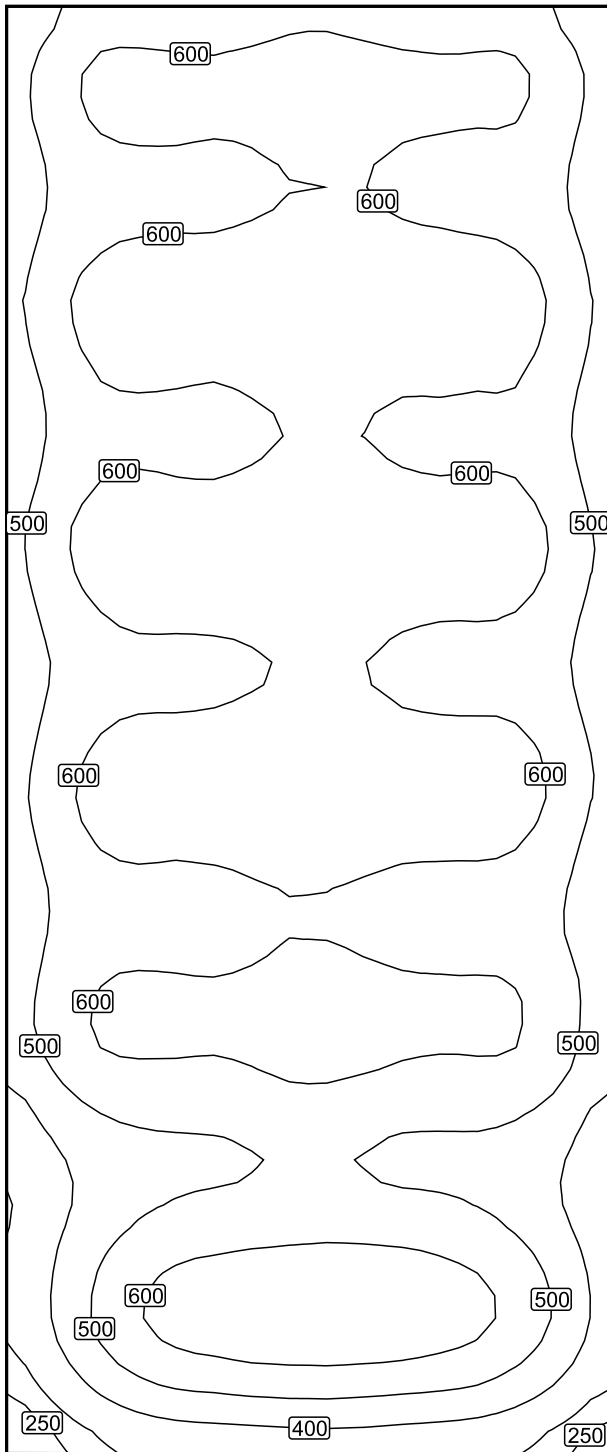
The energy consumption quantities do not take into account light scenes and their dimming levels.

## Workplane (ClassRoom 10) / Perpendicular illuminance (adaptive)



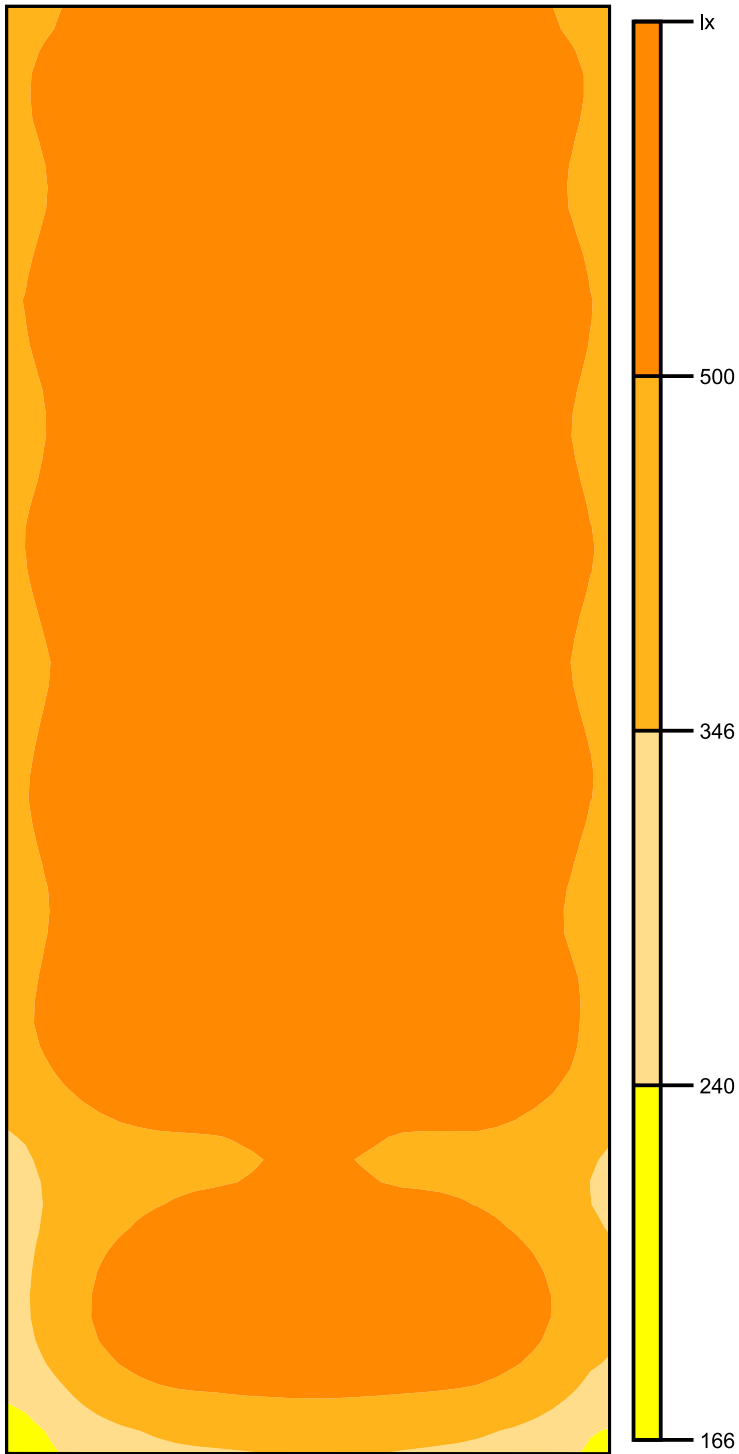
Workplane (ClassRoom 10): Perpendicular illuminance (adaptive) (Surface)  
Light scene: Light scene 1  
Average: 563 lx (Target:  $\geq 500$  lx), Min: 201 lx, Max: 684 lx, Min/average: 0.36, Min/max: 0.29  
Height: 0.800 m, Wall zone: 0.000 m

## Isolines [lx]



Scale: 1 : 75

## False colors [lx]



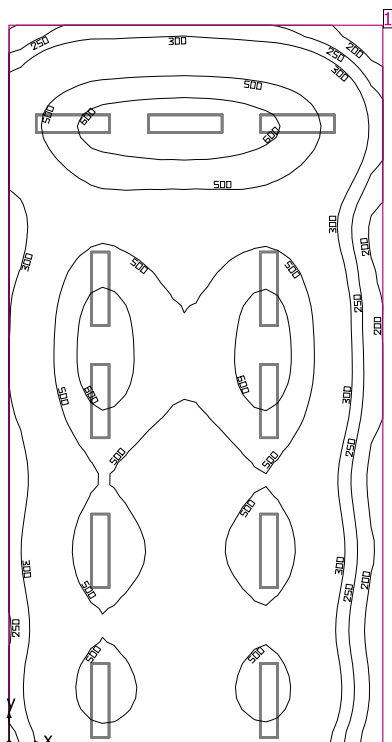
Scale: 1 : 75

## Value grid [lx]

+486	+582	+580	+585	+613	+593	+576	+578	+483
+522	+623	+625	+624	+651	+635	+617	+613	+516
+488	+575	+586	+587	+603	+599	+581	+571	+485
+504	+590	+603	+610	+632	+624	+607	+591	+504
+539	+641	+649	+657	+686	+671	+659	+645	+539
+509	+612	+617	+621	+646	+633	+622	+615	+516
+487	+581	+581	+581	+606	+595	+579	+575	+491
+520	+619	+621	+627	+655	+638	+619	+619	+524
+534	+637	+646	+655	+681	+660	+642	+640	+539
+493	+588	+602	+608	+627	+611	+594	+587	+501
+487	+579	+591	+600	+618	+605	+589	+582	+501
+520	+623	+636	+648	+673	+654	+638	+633	+538
+517	+619	+627	+641	+663	+642	+628	+622	+521
+482	+573	+577	+586	+600	+584	+577	+571	+480
+496	+586	+590	+593	+615	+599	+590	+583	+493
+513	+613	+620	+626	+655	+633	+615	+609	+510
+443	+541	+555	+561	+586	+565	+549	+546	+455
+361	+452	+481	+493	+511	+494	+484	+467	+382
+346	+466	+531	+553	+564	+558	+541	+494	+388
+371	+530	+627	+653	+663	+666	+643	+572	+435
+343	+494	+584	+612	+622	+617	+595	+531	+403
+250	+343	+397	+413	+424	+419	+402	+368	+285

Scale: 1 : 75

## ClassRoom 2



Clearance height: 2.650 m, Reflection factors: Ceiling 70.0%, Walls 50.0%, Floor 20.0%, Light loss factor: 0.80

### Workplane

Surface	Result	Average (Target)	Min	Max	Min/average	Min/max
1 Workplane (ClassRoom 2)	Perpendicular illuminance (adaptive) [lx] Height: 0.800 m, Wall zone: 0.000 m	443 (≥ 500)	147	659	0.33	0.22

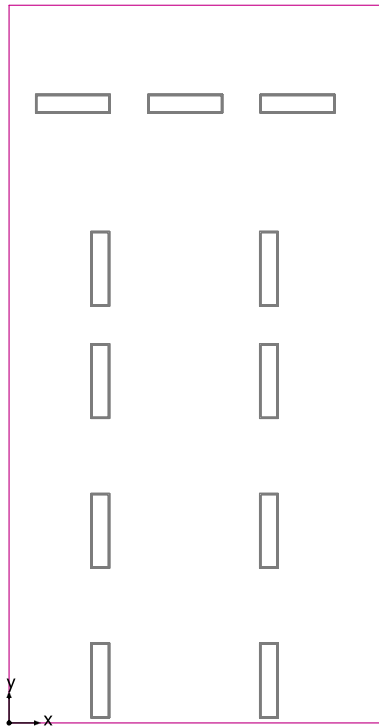
#	Luminaire	Φ(Luminaire) [lm]	Power [W]	Luminous efficacy [lm/W]
11	DIALux -	3656	26.1	140.1
Total via all luminaires		40216	287.1	140.1

Lighting power density: 4.17 W/m<sup>2</sup> = 0.94 W/m<sup>2</sup>/100 lx (Floor area of room 68.83 m<sup>2</sup>)

Consumption: 790 kWh/a of maximum 2450 kWh/a

The energy consumption quantities do not take into account light scenes and their dimming levels.

## Workplane (ClassRoom 2) / Perpendicular illuminance (adaptive)



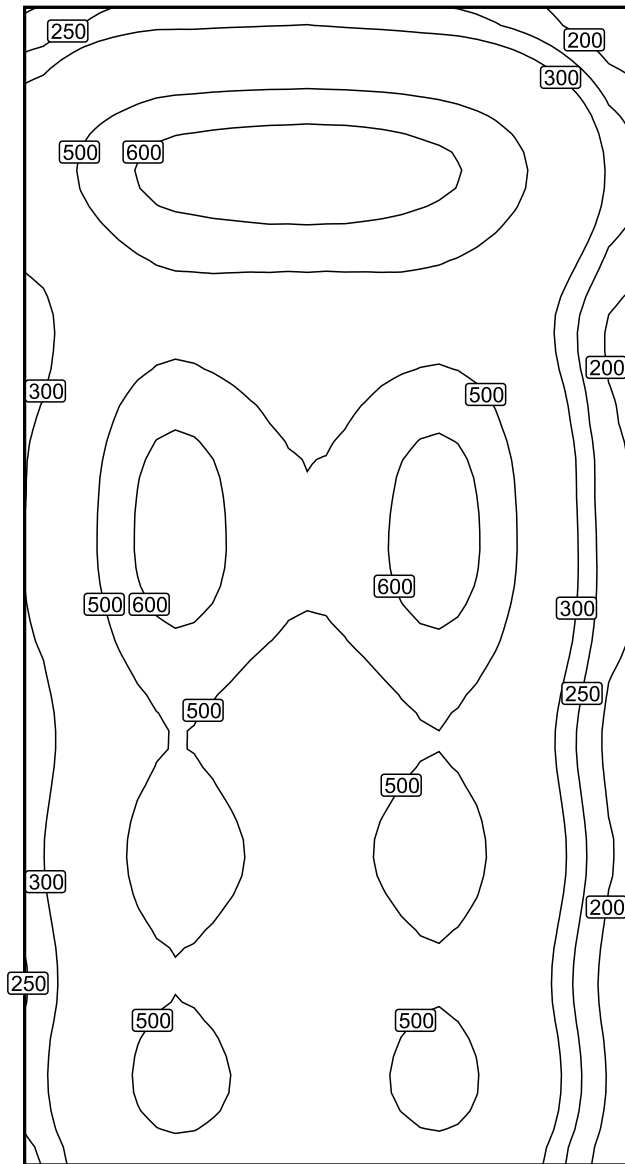
Workplane (ClassRoom 2): Perpendicular illuminance (adaptive) (Surface)

Light scene: Light scene 1

Average: 443 lx (Target:  $\geq 500$  lx), Min: 147 lx, Max: 659 lx, Min/average: 0.33, Min/max: 0.22

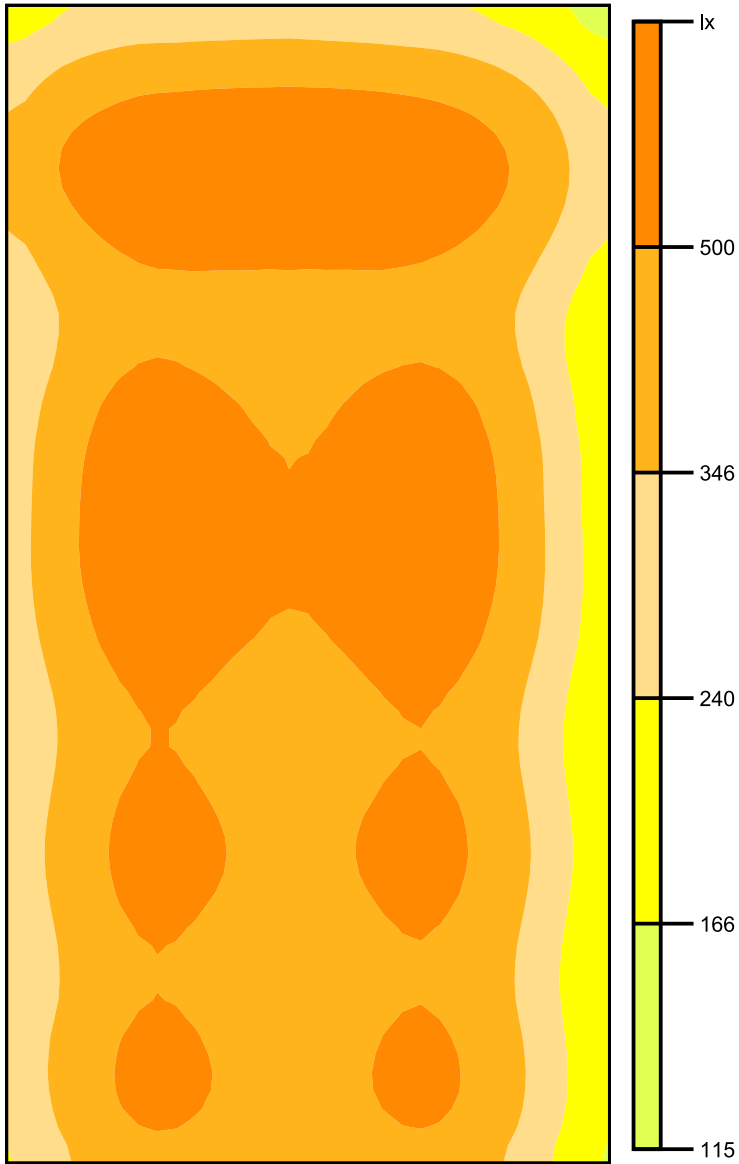
Height: 0.800 m, Wall zone: 0.000 m

## Isolines [lx]



Scale: 1 : 75

## False colors [lx]



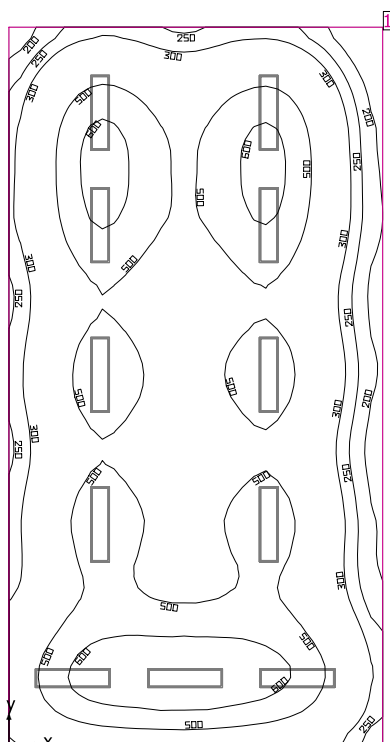
Scale: 1 : 75

## Value grid [lx]

+343	+413	+422	+390	+266
+514	+640	<u>657</u>	+609	+399
+373	+472	+454	+462	+286
+418	+562	+475	+571	+305
+461	+627	+511	+642	+332
+419	+568	+480	+578	+313
+371	+495	+411	+500	+272
+400	+537	+453	+543	+296
+364	+486	+399	+490	<u>263</u>
+383	+519	+425	+525	+279

Scale: 1 : 75

## ClassRoom 3



Clearance height: 2.650 m, Reflection factors: Ceiling 70.0%, Walls 50.0%, Floor 20.0%, Light loss factor: 0.80

### Workplane

Surface	Result	Average (Target)	Min	Max	Min/average	Min/max
1 Workplane (ClassRoom 3)	Perpendicular illuminance (adaptive) [lx] Height: 0.800 m, Wall zone: 0.000 m	445 (≥ 500)	124	679	0.28	0.18

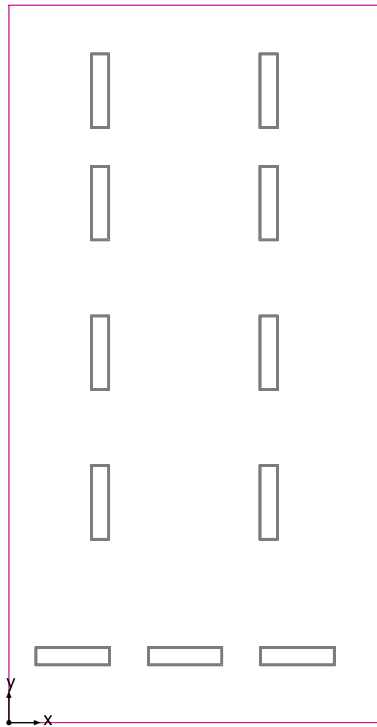
#	Luminaire	Φ(Luminaire) [lm]	Power [W]	Luminous efficacy [lm/W]
11	DIALux -	3656	26.1	140.1
Total via all luminaires		40216	287.1	140.1

Lighting power density: 4.17 W/m<sup>2</sup> = 0.94 W/m<sup>2</sup>/100 lx (Floor area of room 68.81 m<sup>2</sup>)

Consumption: 790 kWh/a of maximum 2450 kWh/a

The energy consumption quantities do not take into account light scenes and their dimming levels.

## Workplane (ClassRoom 3) / Perpendicular illuminance (adaptive)



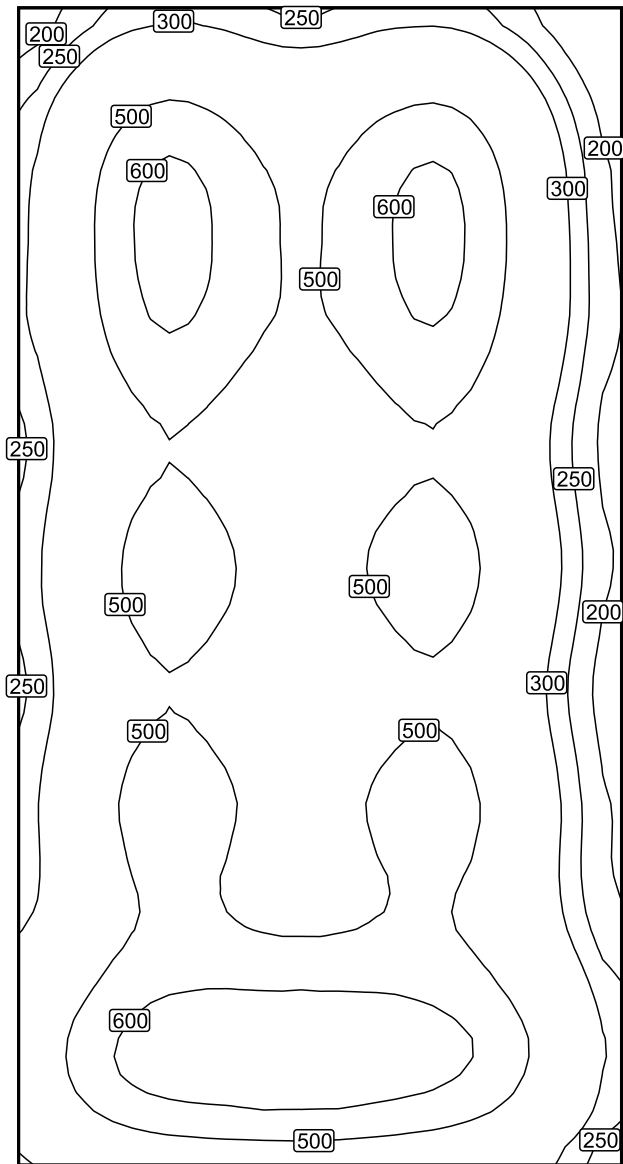
Workplane (ClassRoom 3): Perpendicular illuminance (adaptive) (Surface)

Light scene: Light scene 1

Average: 445 lx (Target:  $\geq 500$  lx), Min: 124 lx, Max: 679 lx, Min/average: 0.28, Min/max: 0.18

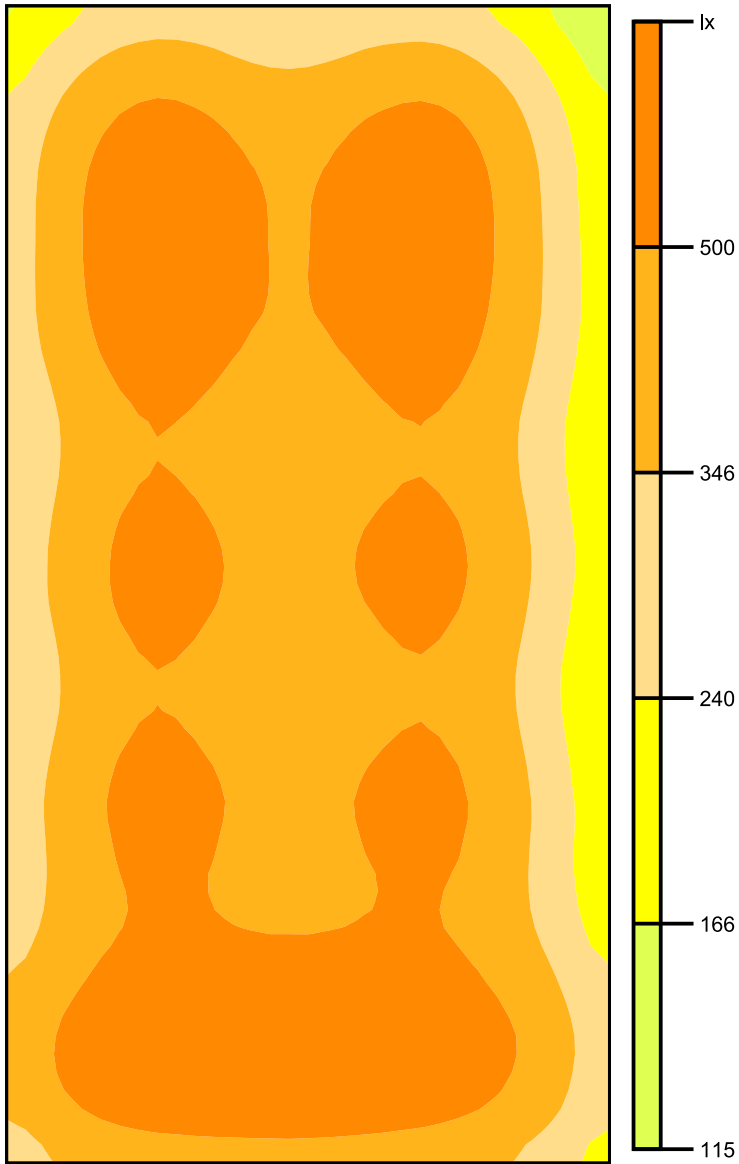
Height: 0.800 m, Wall zone: 0.000 m

## Isolines [lx]



Scale: 1 : 75

## False colors [lx]



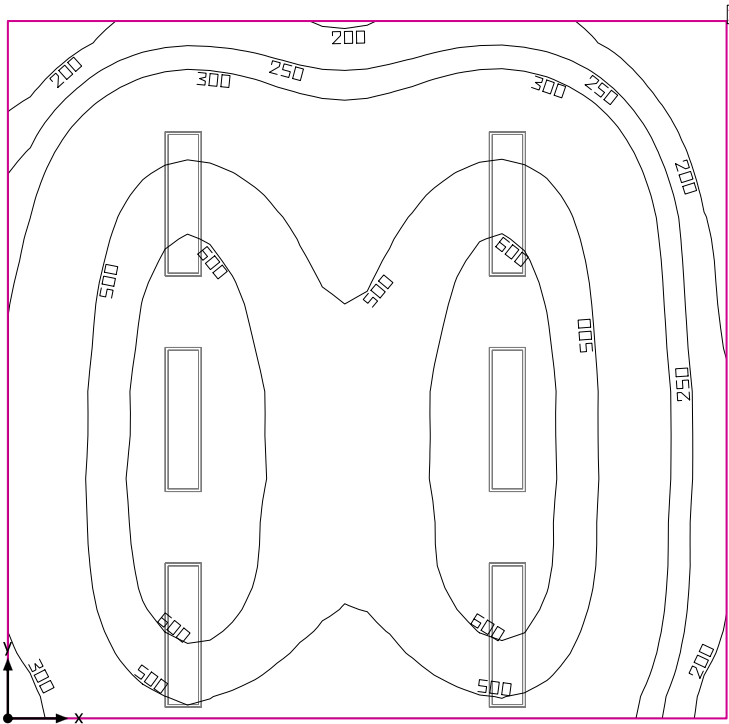
Scale: 1 : 75

## Value grid [lx]

+301	+402	+339	+402	+222
+440	+602	+490	+613	+317
+444	+605	+499	+614	+326
+371	+501	+417	+506	+281
+389	+526	+445	+532	+295
+373	+504	+415	+504	+277
+390	+520	+435	+522	+286
+395	+516	+452	+518	+295
+476	+603	+600	+574	+375
+480	+591	+604	+557	+377

Scale: 1 : 75

## ClassRoom 4



Clearance height: 2.650 m, Reflection factors: Ceiling 70.0%, Walls 50.0%, Floor 20.0%, Light loss factor: 0.80

### Workplane

Surface	Result	Average (Target)	Min	Max	Min/average	Min/max
1 Workplane (ClassRoom 4)	Perpendicular illuminance (adaptive) [lx] Height: 0.800 m, Wall zone: 0.000 m	452 (≥ 500)	113	667	0.25	0.17

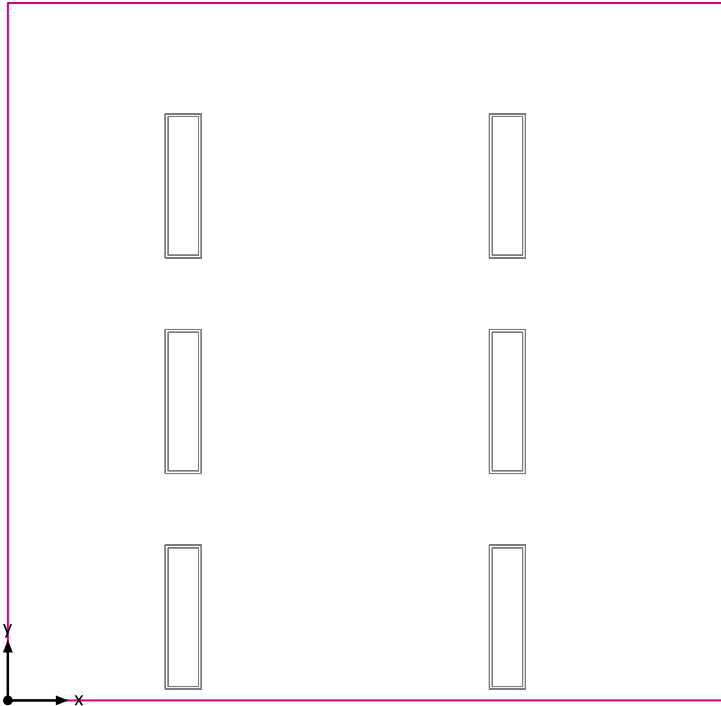
# Luminaire	Φ(Luminaire) [lm]	Power [W]	Luminous efficacy [lm/W]
6 DIALux -	3656	26.1	140.1
Total via all luminaires	21936	156.6	140.1

Lighting power density:  $4.50 \text{ W/m}^2 = 1.00 \text{ W/m}^2/100 \text{ lx}$  (Floor area of room  $34.78 \text{ m}^2$ )

Consumption: 430 kWh/a of maximum 1250 kWh/a

The energy consumption quantities do not take into account light scenes and their dimming levels.

## Workplane (ClassRoom 4) / Perpendicular illuminance (adaptive)



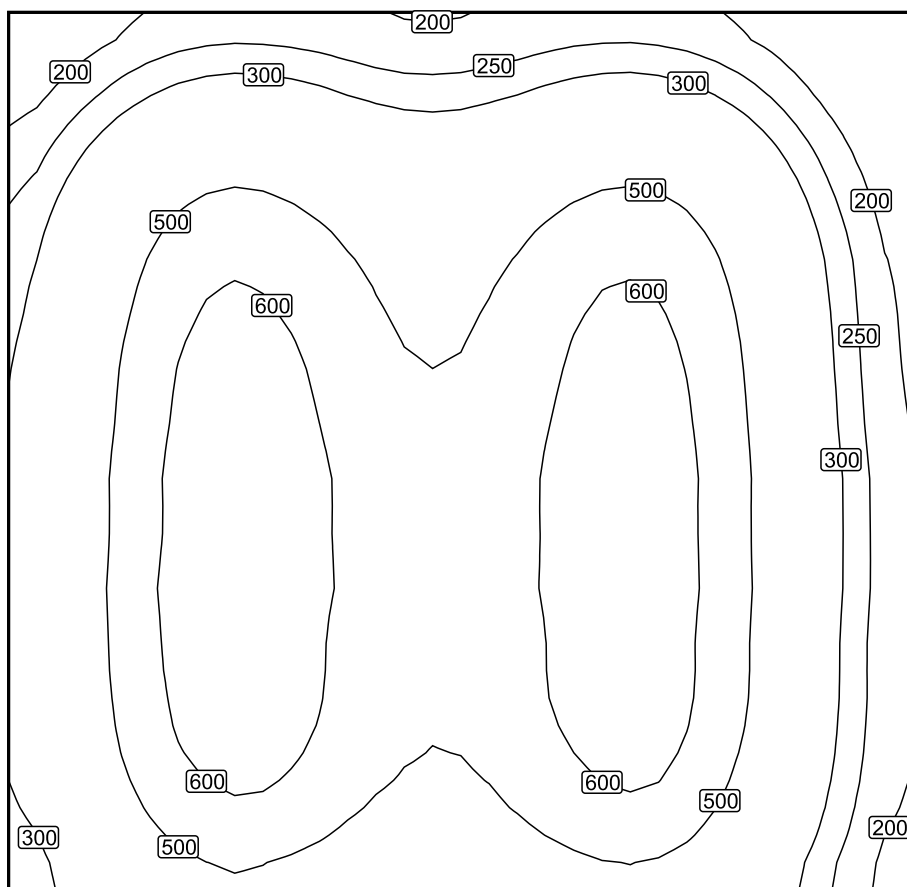
Workplane (ClassRoom 4): Perpendicular illuminance (adaptive) (Surface)

Light scene: Light scene 1

Average: 452 lx (Target:  $\geq 500$  lx), Min: 113 lx, Max: 667 lx, Min/average: 0.25, Min/max: 0.17

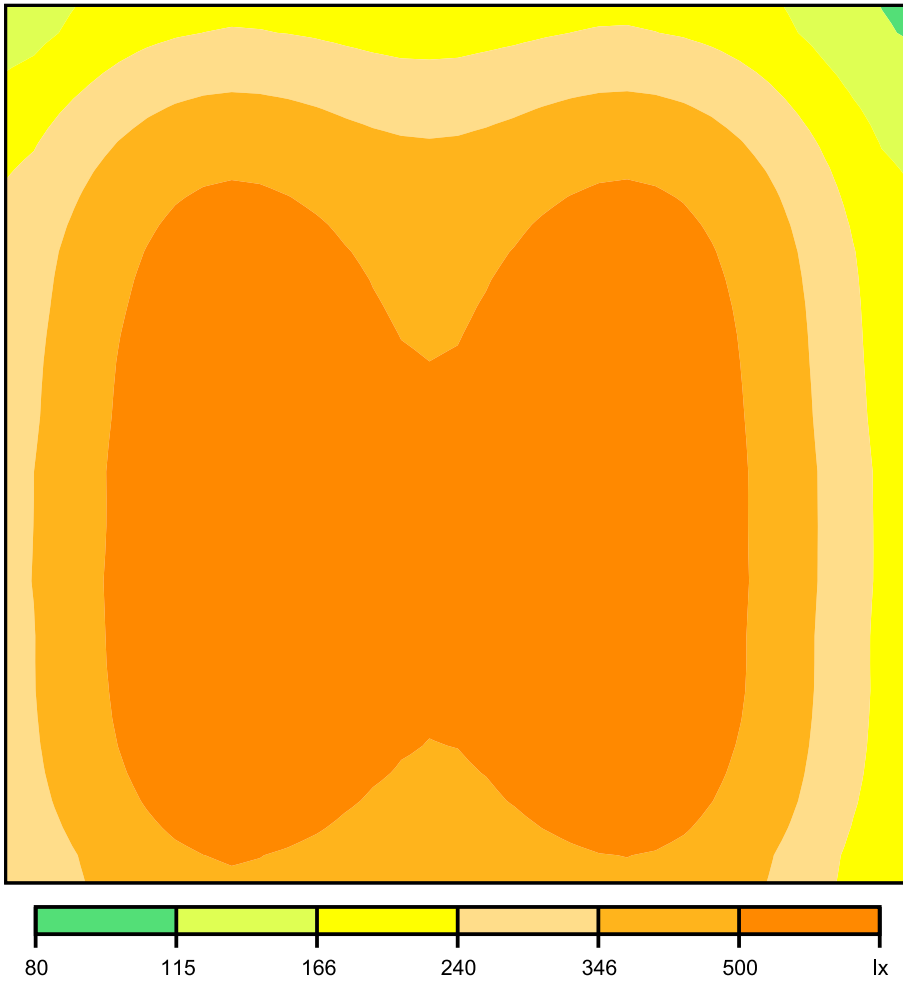
Height: 0.800 m, Wall zone: 0.000 m

## Isolines [lx]



Scale: 1 : 50

## False colors [lx]



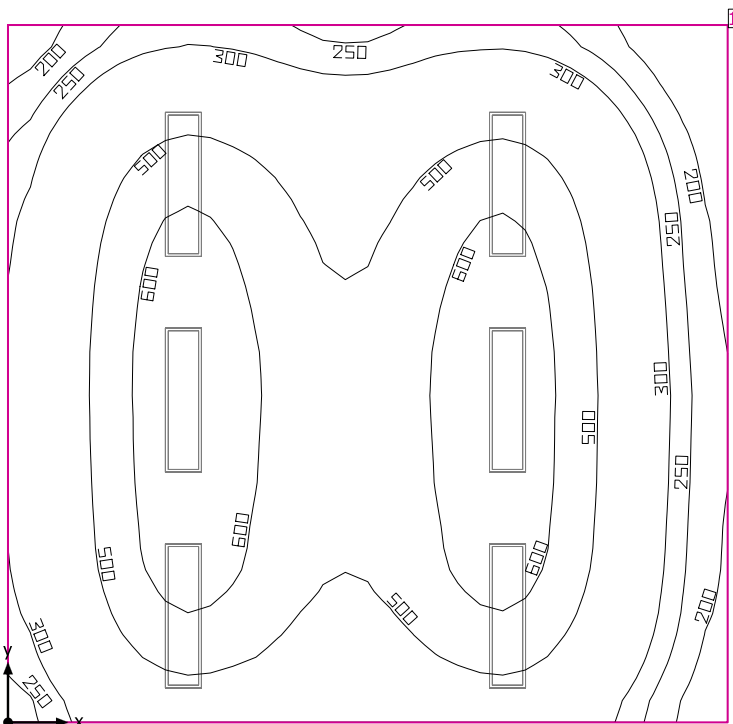
Scale: 1 : 50

Value grid [lx]

+181	+254	+277	+247	+236	+269	+275	+216	+138
+271	+406	+450	+389	+367	+429	+444	+334	+191
+339	+516	+574	+493	+462	+544	+567	+421	+233
+368	+567	+630	+536	+500	+594	+618	+456	+246
+386	+590	+655	+563	+525	+617	+640	+473	+257
+393	+597	+663	+571	+533	+622	+644	+476	+263
+391	+597	+657	+559	+522	+615	+638	+472	+257
+379	+570	+636	+546	+505	+593	+622	+456	+252
+330	+484	+537	+465	+435	+504	+524	+391	+225

Scale: 1 : 50

## ClassRoom 5



Clearance height: 2.650 m, Reflection factors: Ceiling 70.0%, Walls 50.0%, Floor 20.0%, Light loss factor: 0.80

### Workplane

Surface	Result	Average (Target)	Min	Max	Min/average	Min/max
1 Workplane (ClassRoom 5)	Perpendicular illuminance (adaptive) [lx] Height: 0.800 m, Wall zone: 0.000 m	455 (≥ 500)	122	661	0.27	0.18

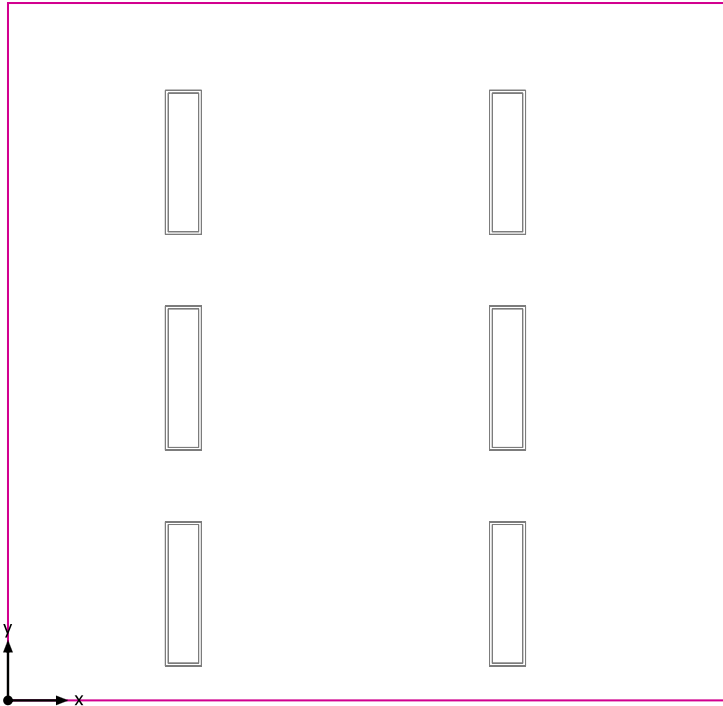
# Luminaire	Φ(Luminaire) [lm]	Power [W]	Luminous efficacy [lm/W]
6 DIALux -	3656	26.1	140.1
<b>Total via all luminaires</b>	<b>21936</b>	<b>156.6</b>	<b>140.1</b>

Lighting power density: 4.50 W/m<sup>2</sup> = 0.99 W/m<sup>2</sup>/100 lx (Floor area of room 34.83 m<sup>2</sup>)

Consumption: 430 kWh/a of maximum 1250 kWh/a

The energy consumption quantities do not take into account light scenes and their dimming levels.

## Workplane (ClassRoom 5) / Perpendicular illuminance (adaptive)



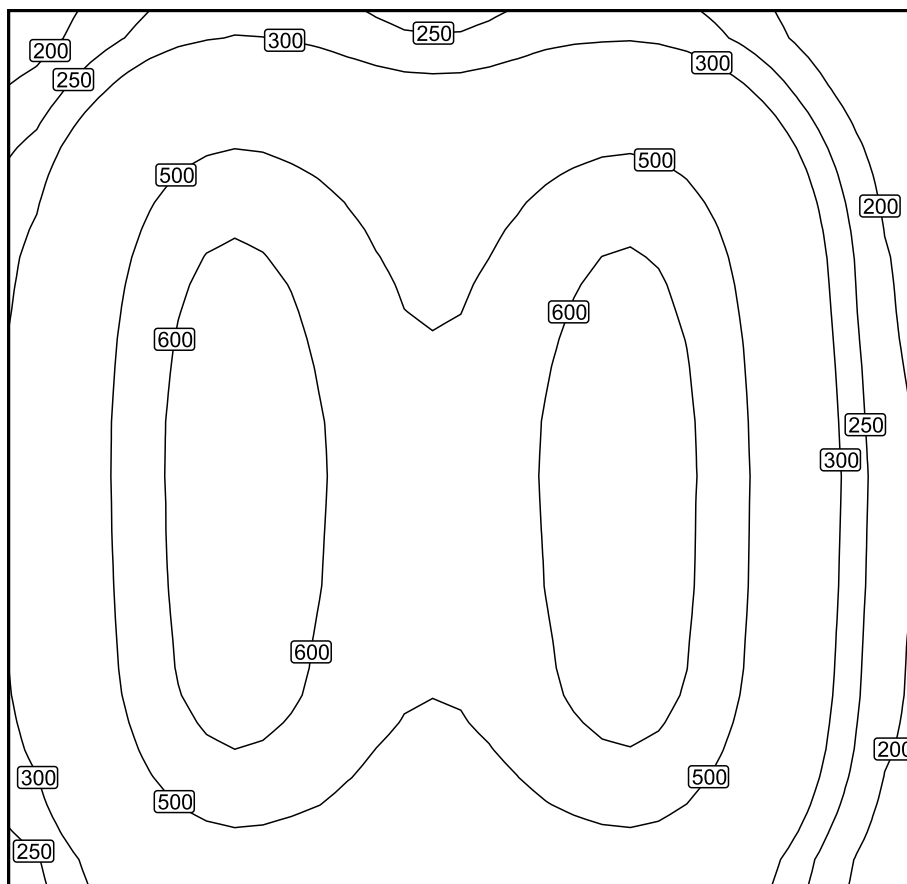
Workplane (ClassRoom 5): Perpendicular illuminance (adaptive) (Surface)

Light scene: Light scene 1

Average: 455 lx (Target:  $\geq 500$  lx), Min: 122 lx, Max: 661 lx, Min/average: 0.27, Min/max: 0.18

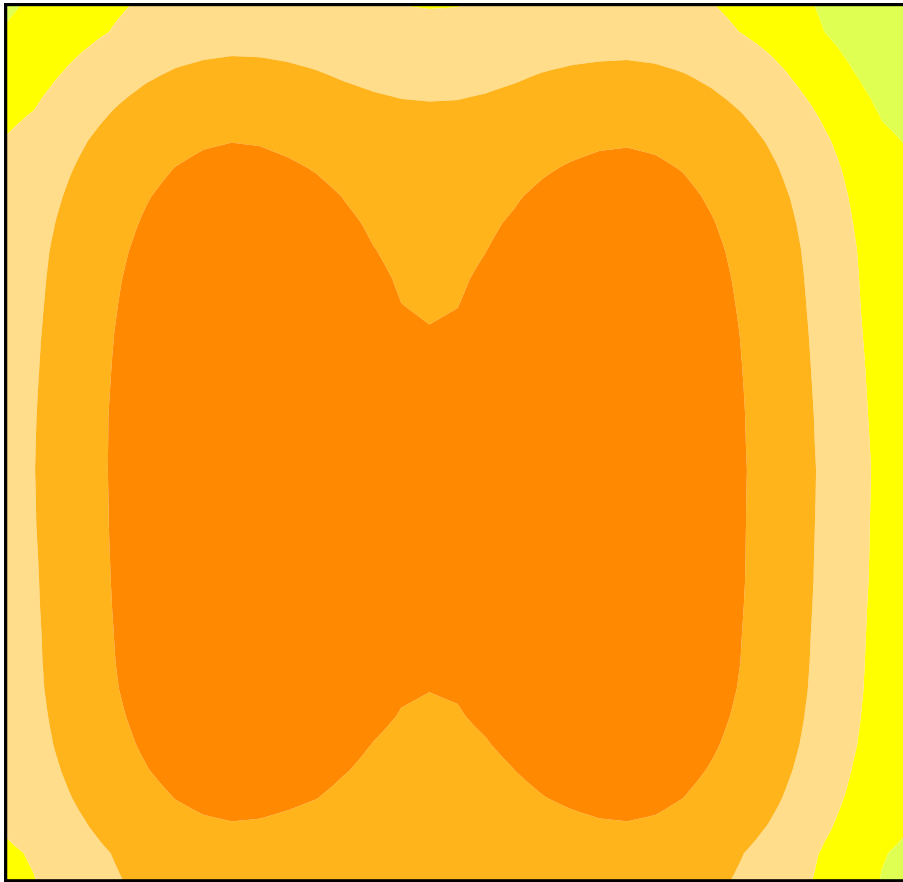
Height: 0.800 m, Wall zone: 0.000 m

## Isolines [lx]



Scale: 1 : 50

## False colors [lx]



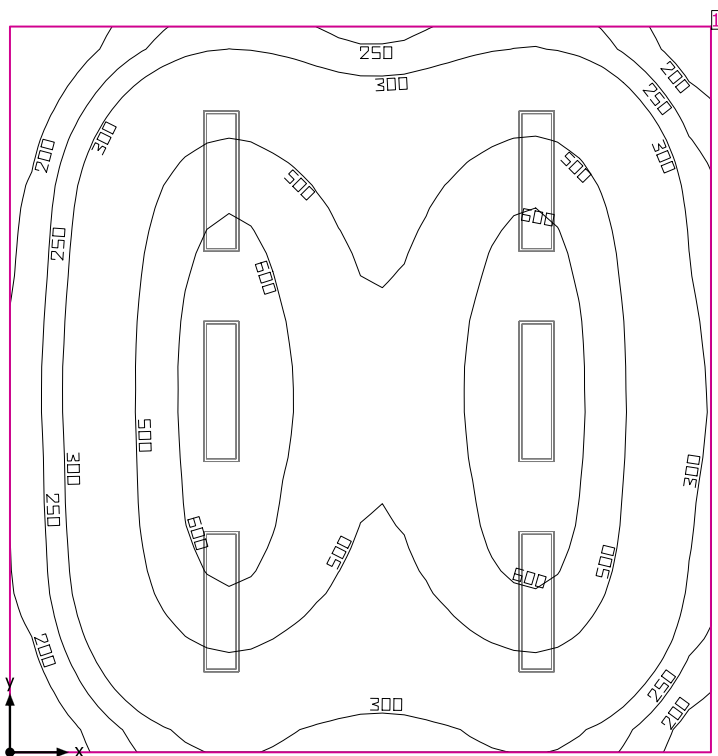
Scale: 1 : 50

## Value grid [lx]

+216	+308	+339	+298	+282	+321	+326	+249	+152
+304	+456	+507	+438	+411	+477	+491	+364	+205
+357	+544	+602	+515	+482	+568	+589	+433	+236
+378	+579	+640	+546	+511	+606	+627	+459	+247
+389	+590	+656	+565	+530	+622	+642	+471	+257
+385	+588	+653	+562	+527	+619	+640	+471	+256
+376	+578	+642	+548	+513	+608	+630	+462	+250
+354	+540	+600	+517	+485	+569	+589	+433	+239
+292	+432	+479	+422	+398	+457	+470	+350	+202

Scale: 1 : 50

## ClassRoom 6



Clearance height: 2.650 m, Reflection factors: Ceiling 70.0%, Walls 50.0%, Floor 20.0%, Light loss factor: 0.80

### Workplane

Surface	Result	Average (Target)	Min	Max	Min/average	Min/max
1 Workplane (ClassRoom 6)	Perpendicular illuminance (adaptive) [lx] Height: 0.800 m, Wall zone: 0.000 m	438 (≥ 500)	126	657	0.29	0.19

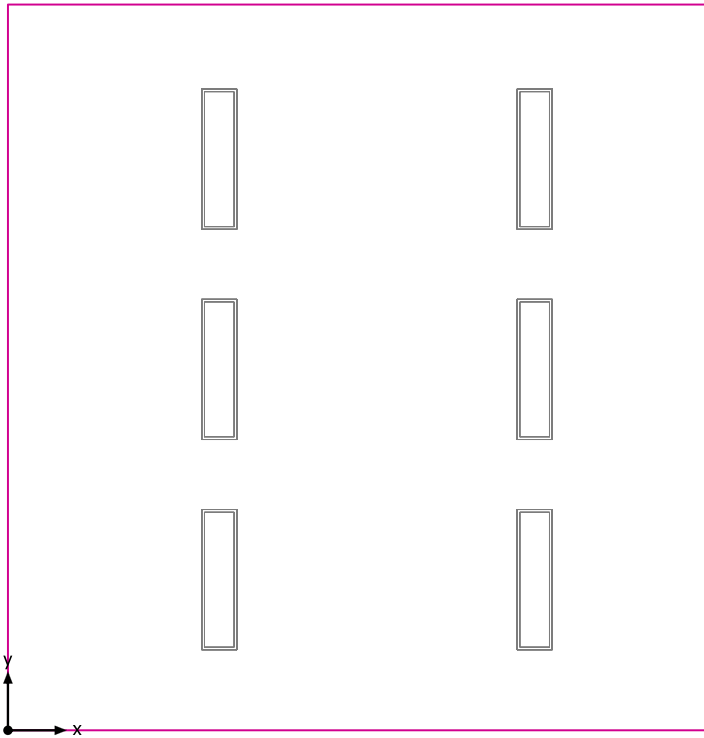
# Luminaire	Φ(Luminaire) [lm]	Power [W]	Luminous efficacy [lm/W]
6 DIALux -	3656	26.1	140.1
<b>Total via all luminaires</b>	<b>21936</b>	<b>156.6</b>	<b>140.1</b>

Lighting power density: 4.20 W/m<sup>2</sup> = 0.96 W/m<sup>2</sup>/100 lx (Floor area of room 37.27 m<sup>2</sup>)

Consumption: 430 kWh/a of maximum 1350 kWh/a

The energy consumption quantities do not take into account light scenes and their dimming levels.

## Workplane (ClassRoom 6) / Perpendicular illuminance (adaptive)



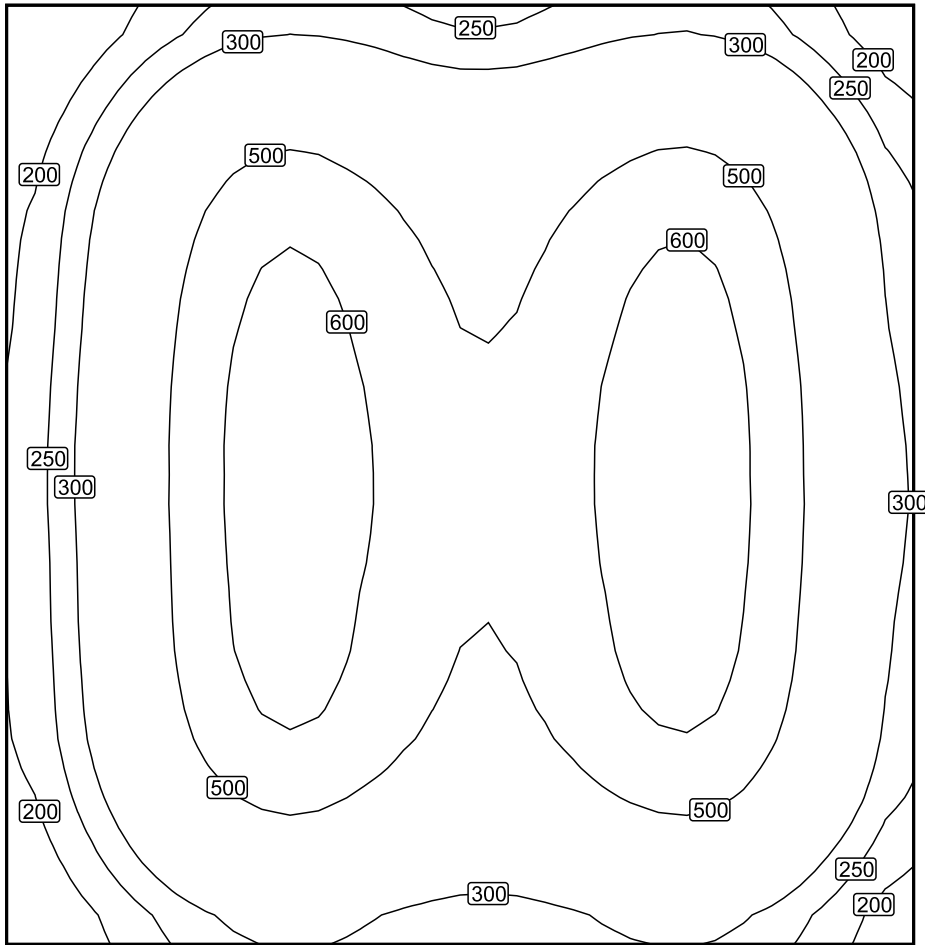
Workplane (ClassRoom 6): Perpendicular illuminance (adaptive) (Surface)

Light scene: Light scene 1

Average: 438 lx (Target:  $\geq 500$  lx), Min: 126 lx, Max: 657 lx, Min/average: 0.29, Min/max: 0.19

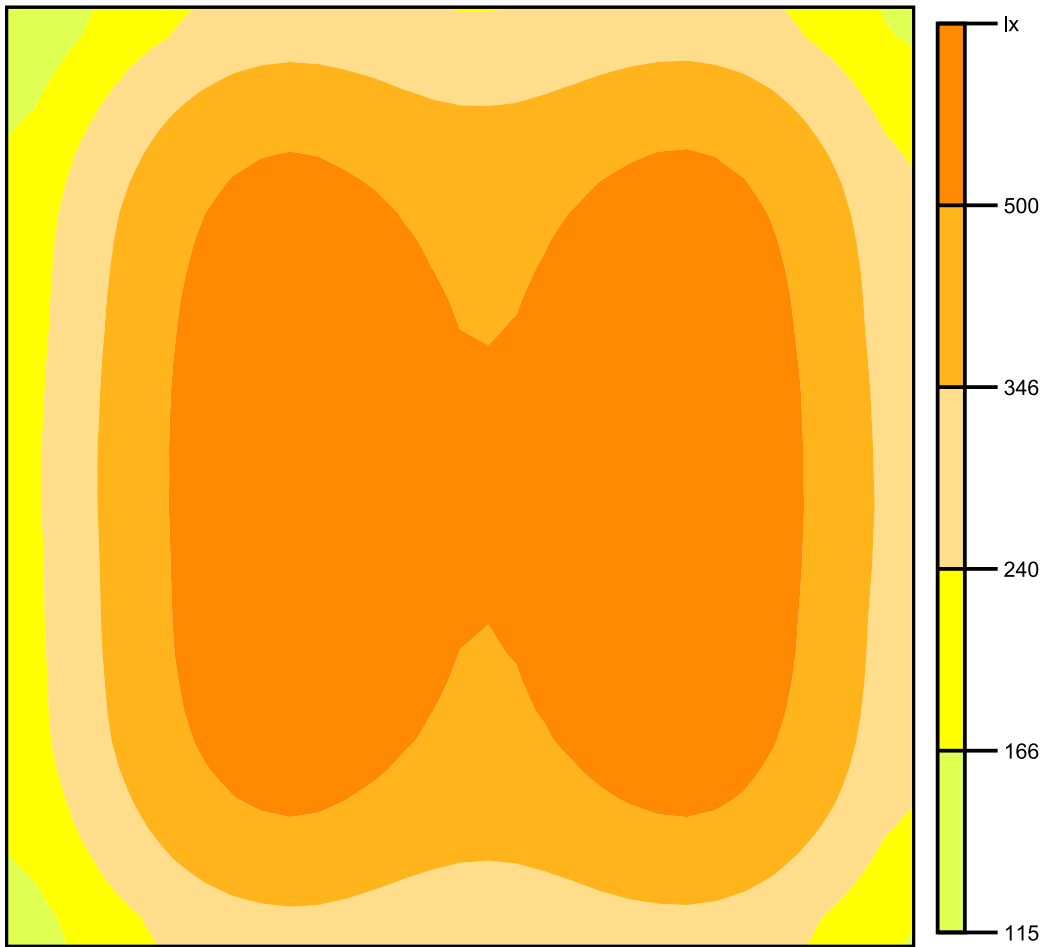
Height: 0.800 m, Wall zone: 0.000 m

## Isolines [lx]



Scale: 1 : 50

## False colors [lx]



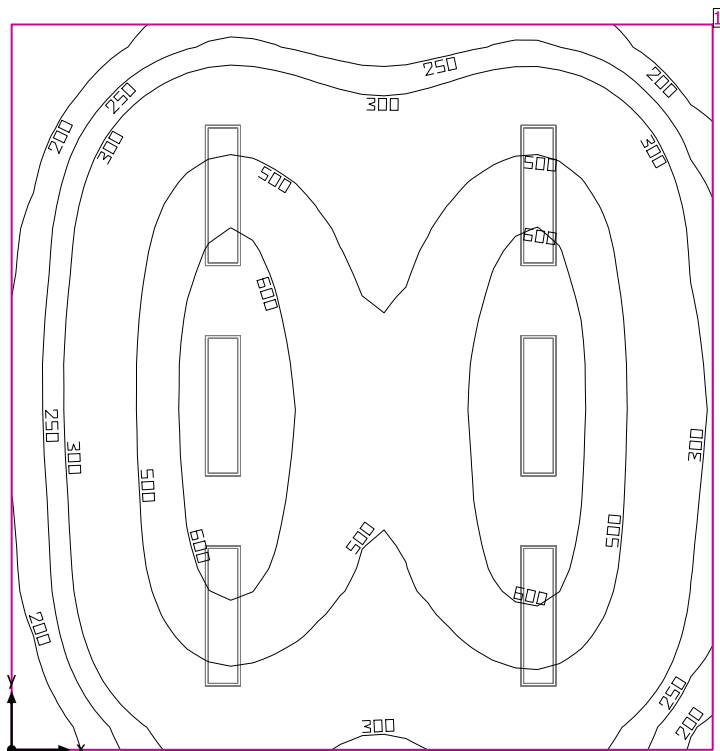
Scale: 1 : 50

## Value grid [lx]

+161	+258	+334	+323	+284	+303	+342	+308	+208
+218	+378	+505	+482	+416	+446	+517	+458	+295
+247	+443	+596	+568	+484	+521	+610	+540	+340
+259	+468	+629	+600	+511	+550	+643	+570	+359
+266	+476	+638	+613	+527	+563	+653	+579	+370
+262	+471	+631	+603	+514	+553	+646	+573	+363
+255	+456	+611	+581	+492	+531	+623	+553	+348
+232	+398	+527	+502	+432	+462	+536	+476	+307
+179	+283	+361	+347	+304	+321	+364	+328	+221

Scale: 1 : 50

## ClassRoom 7



Clearance height: 2.650 m, Reflection factors: Ceiling 70.0%, Walls 50.0%, Floor 20.0%, Light loss factor: 0.80

### Workplane

Surface	Result	Average (Target)	Min	Max	Min/average	Min/max
1 Workplane (ClassRoom 7)	Perpendicular illuminance (adaptive) [lx] Height: 0.800 m, Wall zone: 0.000 m	435 (≥ 500)	114	654	0.26	0.17

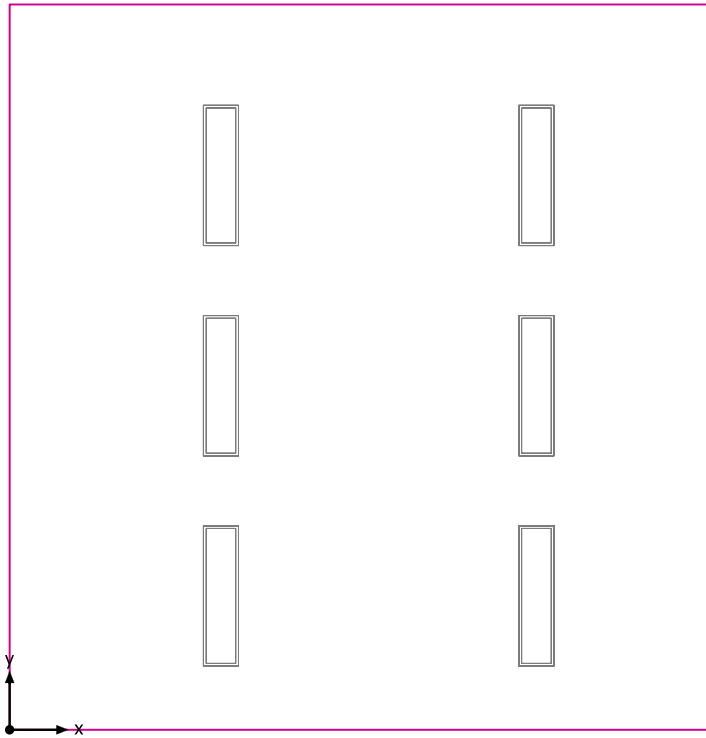
# Luminaire	Φ(Luminaire) [lm]	Power [W]	Luminous efficacy [lm/W]
6 DIALux -	3656	26.1	140.1
<b>Total via all luminaires</b>	<b>21936</b>	<b>156.6</b>	<b>140.1</b>

Lighting power density: 4.20 W/m<sup>2</sup> = 0.97 W/m<sup>2</sup>/100 lx (Floor area of room 37.24 m<sup>2</sup>)

Consumption: 430 kWh/a of maximum 1350 kWh/a

The energy consumption quantities do not take into account light scenes and their dimming levels.

## Workplane (ClassRoom 7) / Perpendicular illuminance (adaptive)



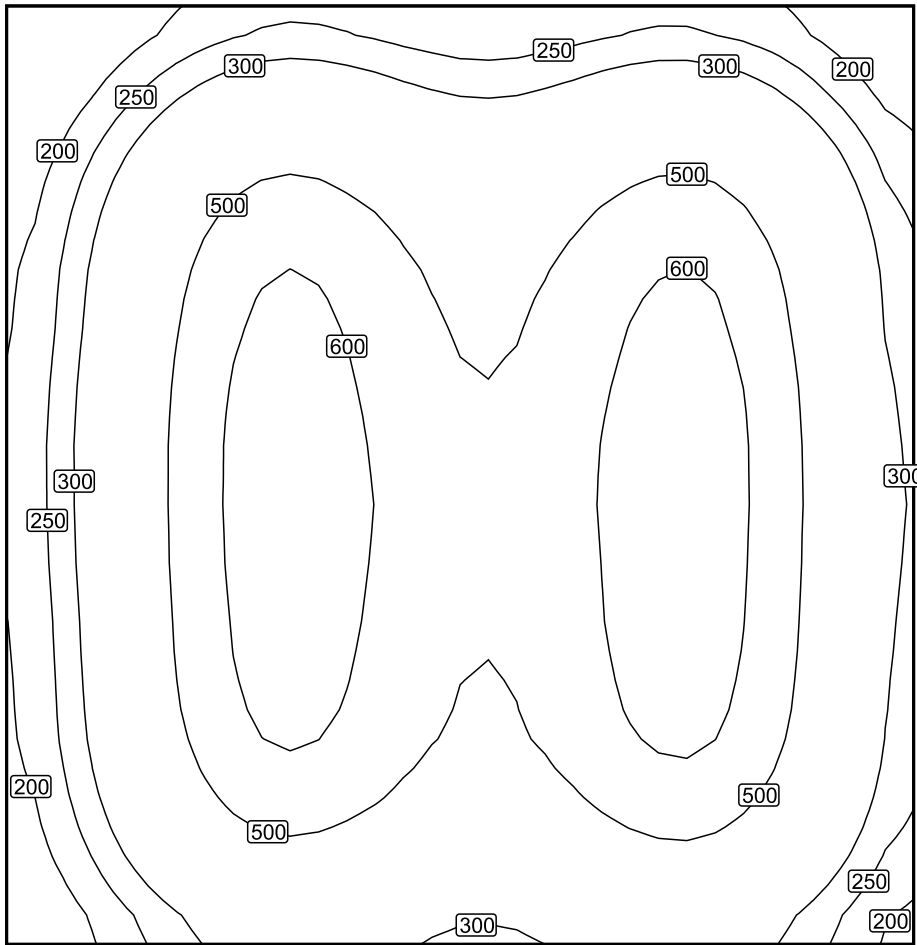
Workplane (ClassRoom 7): Perpendicular illuminance (adaptive) (Surface)

Light scene: Light scene 1

Average: 435 lx (Target:  $\geq 500$  lx), Min: 114 lx, Max: 654 lx, Min/average: 0.26, Min/max: 0.17

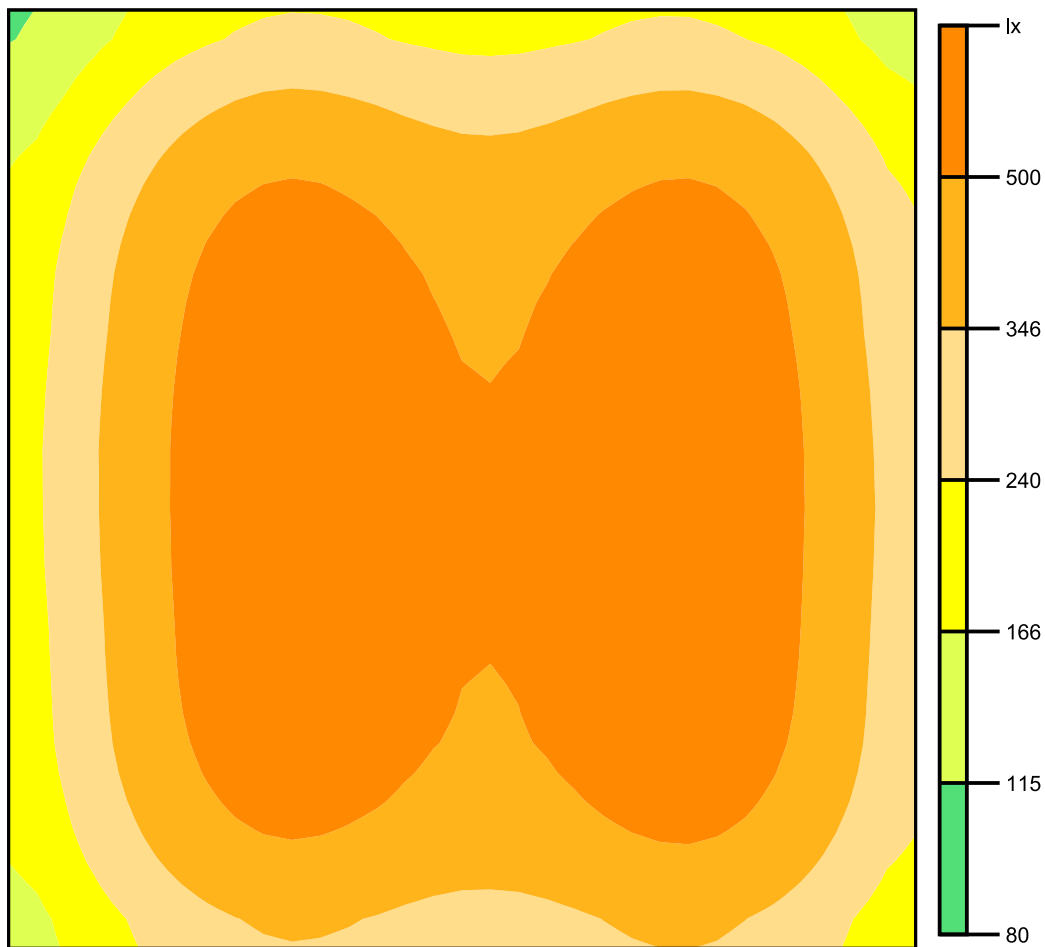
Height: 0.800 m, Wall zone: 0.000 m

## Isolines [lx]



Scale: 1 : 50

## False colors [lx]



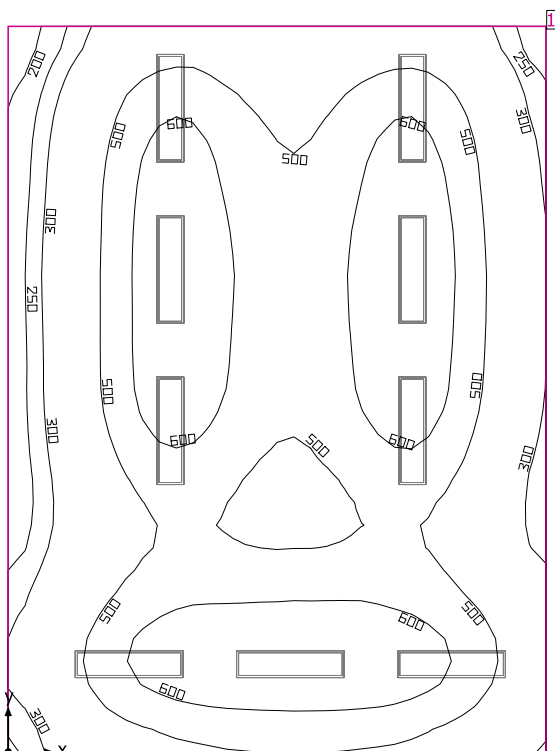
Scale: 1 : 50

## Value grid [lx]

+143	+227	+293	+284	+249	+263	+296	+264	+181
+206	+354	+471	+450	+387	+414	+479	+424	+272
+245	+435	+585	+556	+474	+508	+593	+526	+331
+260	+467	+624	+594	+503	+542	+634	+564	+353
+268	+478	+639	+611	+523	+560	+650	+577	+367
+262	+473	+635	+607	+518	+555	+647	+573	+363
+252	+459	+618	+590	+500	+540	+633	+559	+351
+234	+411	+552	+529	+457	+488	+567	+501	+323
+186	+304	+396	+384	+338	+359	+409	+367	+247

Scale: 1 : 50

## ClassRoom 8



Clearance height: 2.650 m, Reflection factors: Ceiling 70.0%, Walls 50.0%, Floor 20.0%, Light loss factor: 0.80

### Workplane

Surface	Result	Average (Target)	Min	Max	Min/average	Min/max
1 Workplane (ClassRoom 8)	Perpendicular illuminance (adaptive) [lx] Height: 0.800 m, Wall zone: 0.000 m	497 (≥ 500)	169	677	0.34	0.25

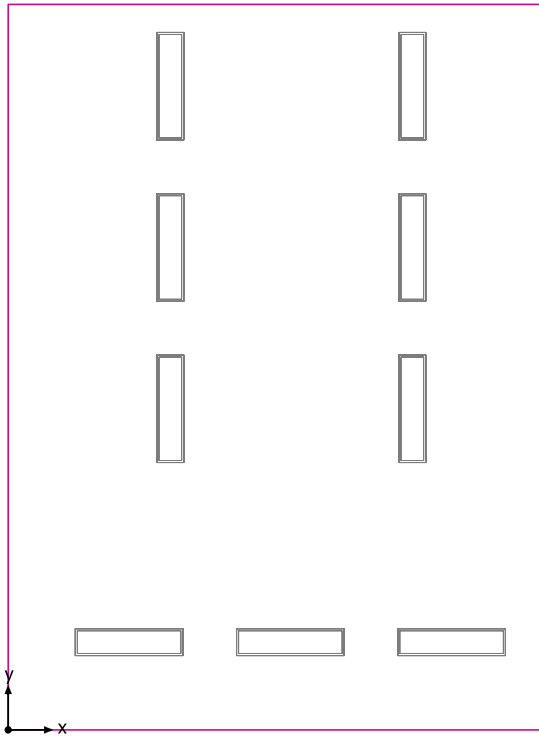
# Luminaire	Φ(Luminaire) [lm]	Power [W]	Luminous efficacy [lm/W]
9 DIALux -	3656	26.1	140.1
<b>Total via all luminaires</b>	<b>32904</b>	<b>234.9</b>	<b>140.1</b>

Lighting power density: 4.84 W/m<sup>2</sup> = 0.97 W/m<sup>2</sup>/100 lx (Floor area of room 48.57 m<sup>2</sup>)

Consumption: 650 kWh/a of maximum 1750 kWh/a

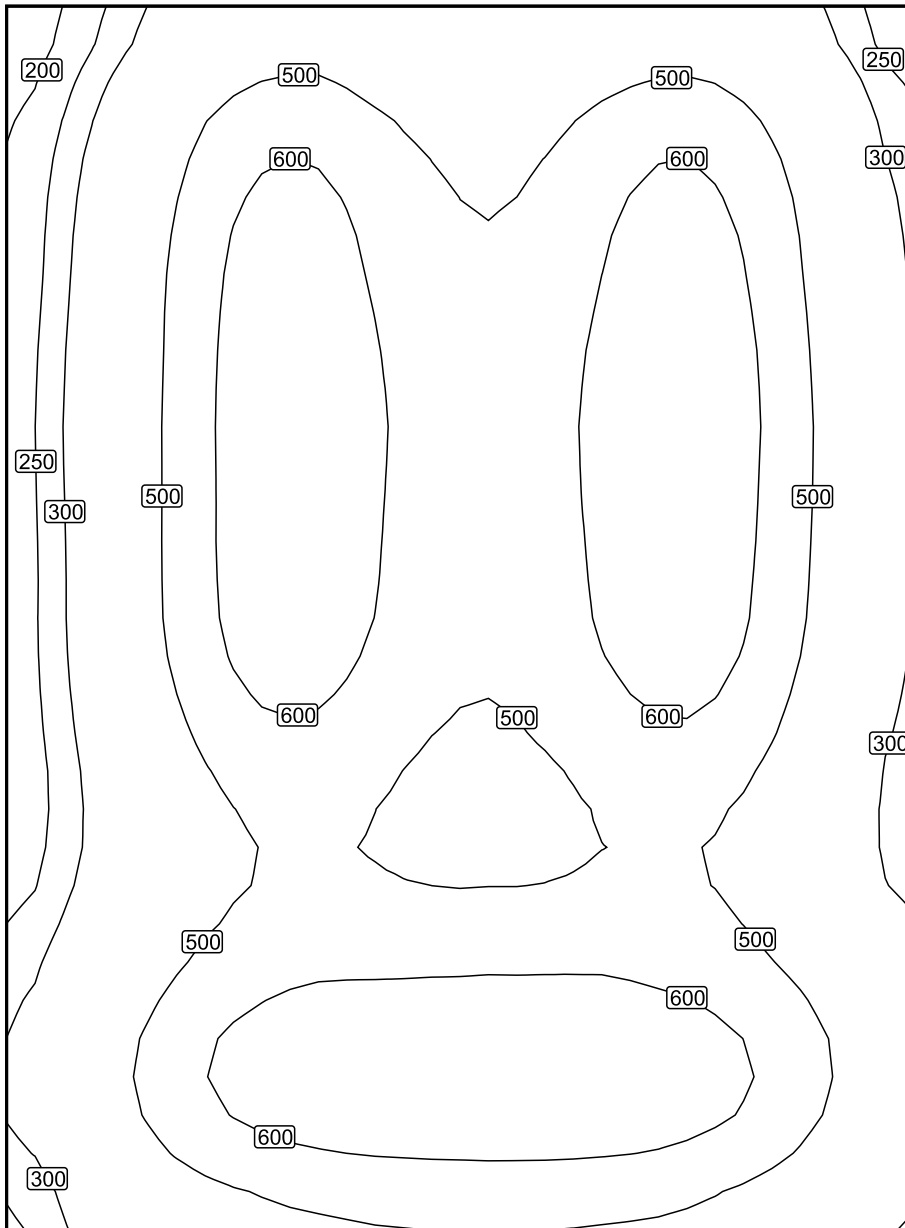
The energy consumption quantities do not take into account light scenes and their dimming levels.

## Workplane (ClassRoom 8) / Perpendicular illuminance (adaptive)



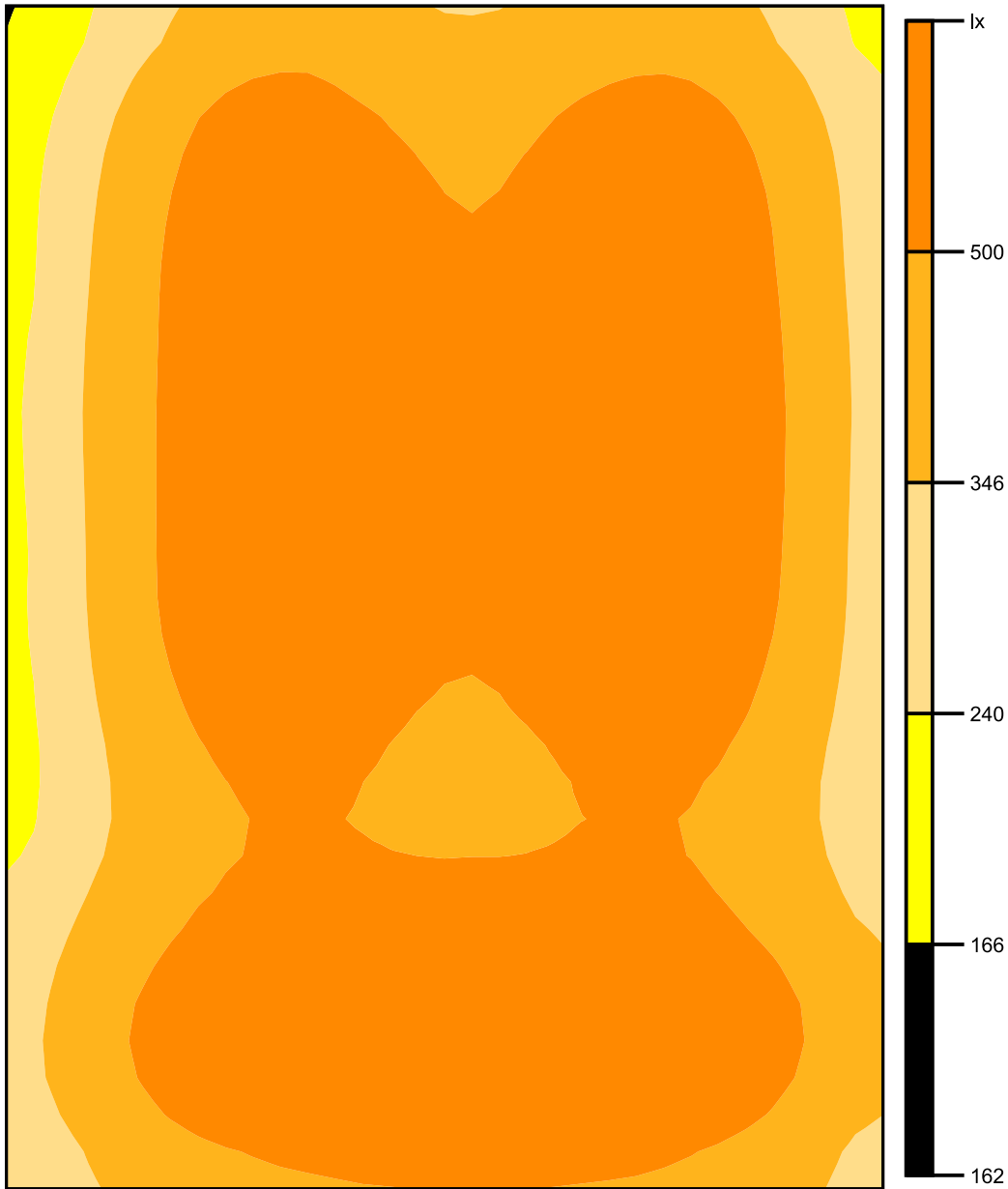
Workplane (ClassRoom 8): Perpendicular illuminance (adaptive) (Surface)  
Light scene: Light scene 1  
Average: 497 lx (Target:  $\geq 500$  lx), Min: 169 lx, Max: 677 lx, Min/average: 0.34, Min/max: 0.25  
Height: 0.800 m, Wall zone: 0.000 m

## Isolines [lx]



Scale: 1 : 50

## False colors [lx]



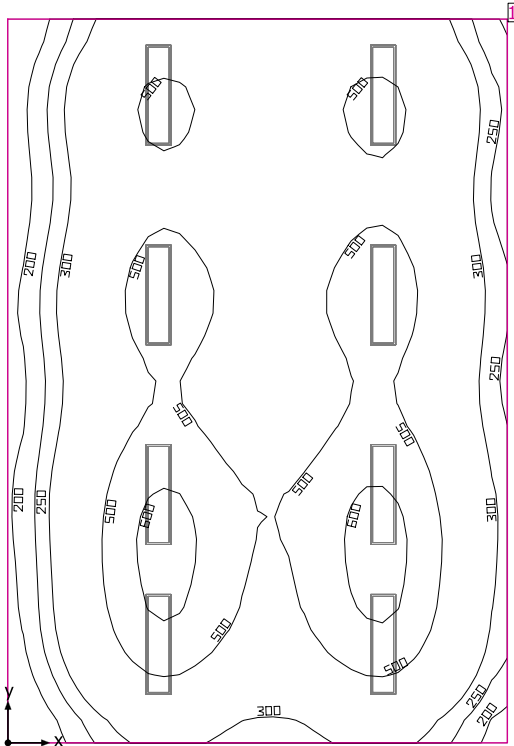
Scale: 1 : 50

## Value grid [lx]

+239	+431	+490	+404	+452	+481	+314
+292	+545	+612	+503	+568	+609	+391
+311	+573	+645	+534	+603	+647	+412
+315	+576	+647	+544	+609	+651	+419
+310	+572	+637	+526	+597	+636	+409
+289	+500	+558	+481	+529	+551	+365
+299	+466	+519	+501	+514	+498	+360
+380	+573	+645	+655	+650	+606	+458
+353	+519	+581	+597	+592	+552	+414

Scale: 1 : 50

## ClassRoom 9



Clearance height: 2.650 m, Reflection factors: Ceiling 70.0%, Walls 50.0%, Floor 20.0%, Light loss factor: 0.80

### Workplane

Surface	Result	Average (Target)	Min	Max	Min/average	Min/max
1 Workplane (ClassRoom 9)	Perpendicular illuminance (adaptive) [lx] Height: 0.800 m, Wall zone: 0.000 m	421 (≥ 500)	133	630	0.32	0.21

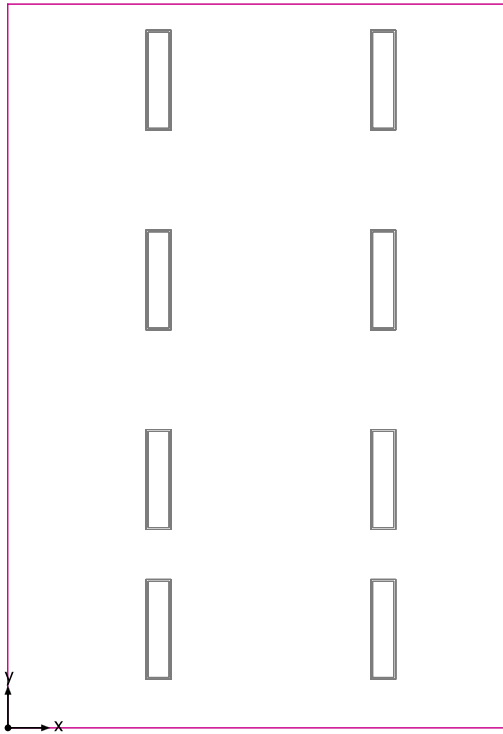
# Luminaire	Φ(Luminaire) [lm]	Power [W]	Luminous efficacy [lm/W]
8 DIALux -	3656	26.1	140.1
Total via all luminaires	29248	208.8	140.1

Lighting power density: 4.00 W/m<sup>2</sup> = 0.95 W/m<sup>2</sup>/100 lx (Floor area of room 52.20 m<sup>2</sup>)

Consumption: 570 kWh/a of maximum 1850 kWh/a

The energy consumption quantities do not take into account light scenes and their dimming levels.

## Workplane (ClassRoom 9) / Perpendicular illuminance (adaptive)



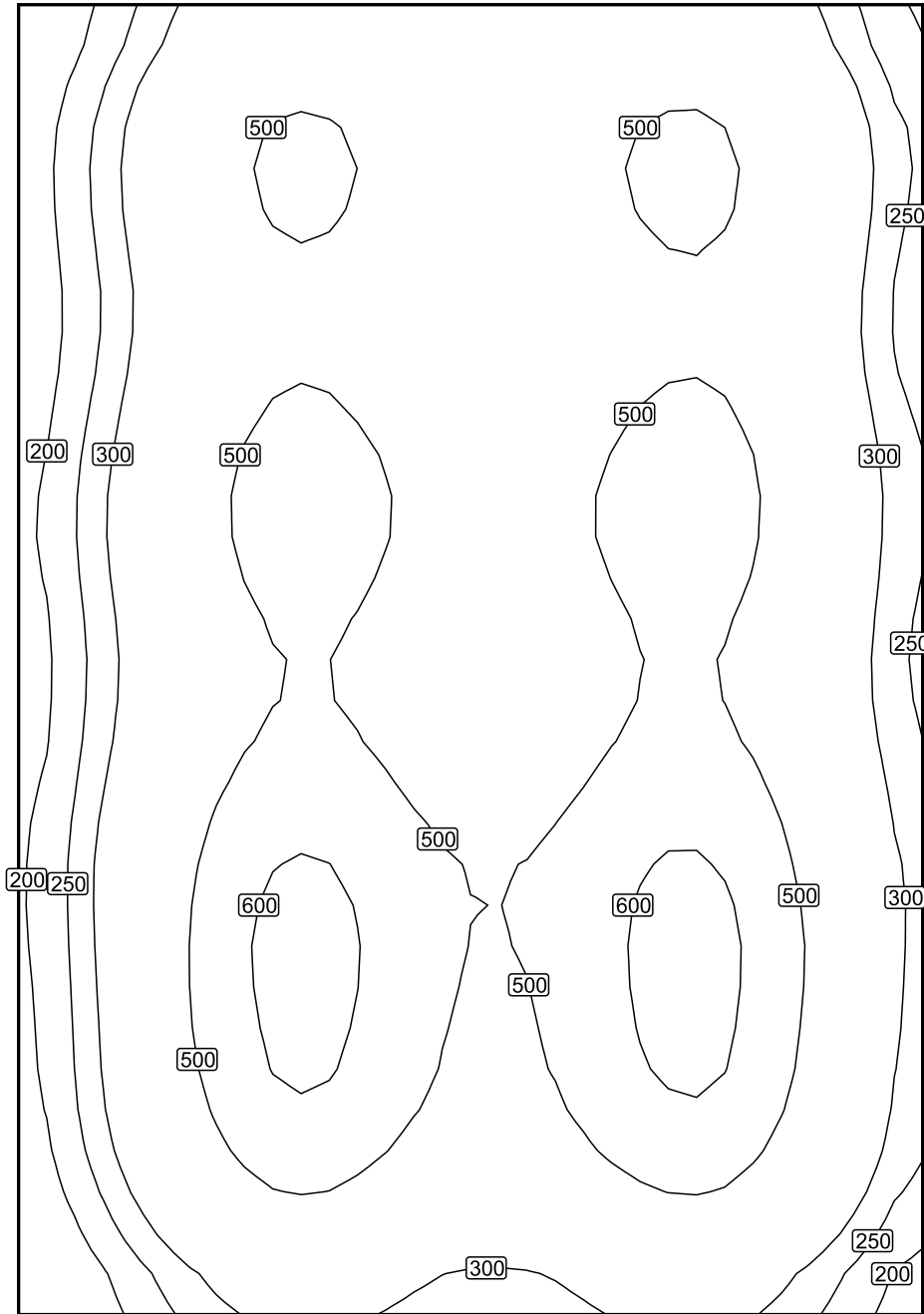
Workplane (ClassRoom 9): Perpendicular illuminance (adaptive) (Surface)

Light scene: Light scene 1

Average: 421 lx (Target:  $\geq 500$  lx), Min: 133 lx, Max: 630 lx, Min/average: 0.32, Min/max: 0.21

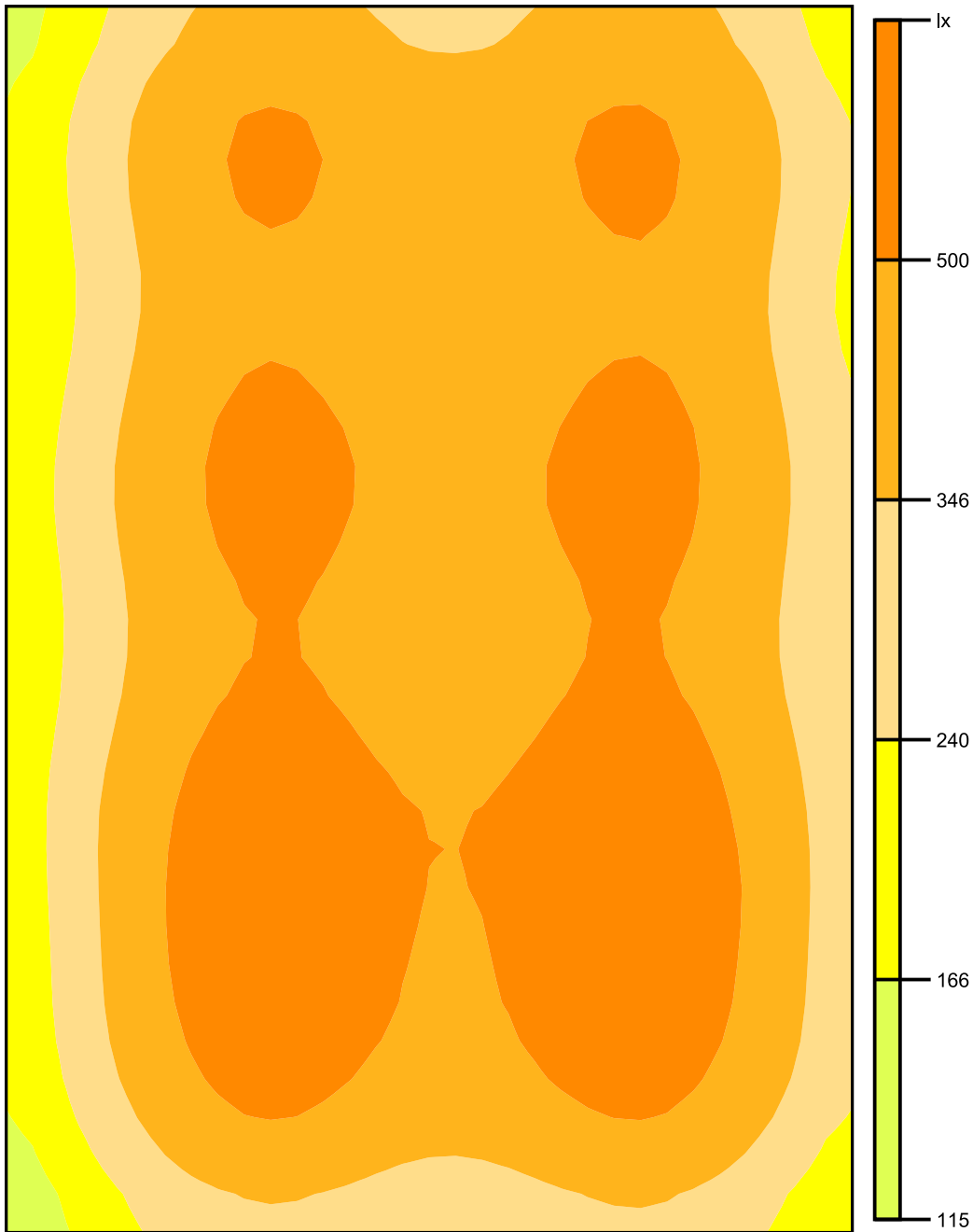
Height: 0.800 m, Wall zone: 0.000 m

## Isolines [lx]



Scale: 1 : 50

## False colors [lx]



Scale: 1 : 50

## Value grid [lx]

+212	+391	+442	+365	+414	+443	+286
+238	+447	+504	+420	+473	+506	+325
+226	+420	+472	+389	+442	+473	+305
+254	+467	+527	+442	+494	+529	+338
+253	+457	+515	+433	+485	+513	+335
+249	+453	+506	+425	+481	+505	+330
+277	+521	+588	+493	+553	+584	+375
+273	+543	<u>+613</u>	+493	+569	<u>+613</u>	+387
+257	+498	+567	+462	+528	+568	+361
<u>+191</u>	+350	+393	+327	+369	+394	+260

Scale: 1 : 50