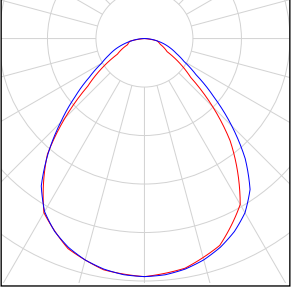


## Classroom Lighting Simulation Caculation-0508

## Content

Classroom Lighting Simulation Calculation-0508	
Luminaire list.....	3
Views.....	4
Site 1	
Building 1	
Storey 1	
ClassRoom 1	
Summary.....	12
Workplane (ClassRoom 1) / Perpendicular illuminance (adaptive).....	13
ClassRoom 10	
Summary.....	17
Workplane (ClassRoom 10) / Perpendicular illuminance (adaptive).....	18
ClassRoom 2	
Summary.....	22
Workplane (ClassRoom 2) / Perpendicular illuminance (adaptive).....	23
ClassRoom 3	
Summary.....	27
Workplane (ClassRoom 3) / Perpendicular illuminance (adaptive).....	28
ClassRoom 4	
Summary.....	32
Workplane (ClassRoom 4) / Perpendicular illuminance (adaptive).....	33
ClassRoom 5	
Summary.....	37
Workplane (ClassRoom 5) / Perpendicular illuminance (adaptive).....	38
ClassRoom 6	
Summary.....	42
Workplane (ClassRoom 6) / Perpendicular illuminance (adaptive).....	43
ClassRoom 7	
Summary.....	47
Workplane (ClassRoom 7) / Perpendicular illuminance (adaptive).....	48
ClassRoom 8	
Summary.....	52
Workplane (ClassRoom 8) / Perpendicular illuminance (adaptive).....	53
ClassRoom 9	
Summary.....	57
Workplane (ClassRoom 9) / Perpendicular illuminance (adaptive).....	58

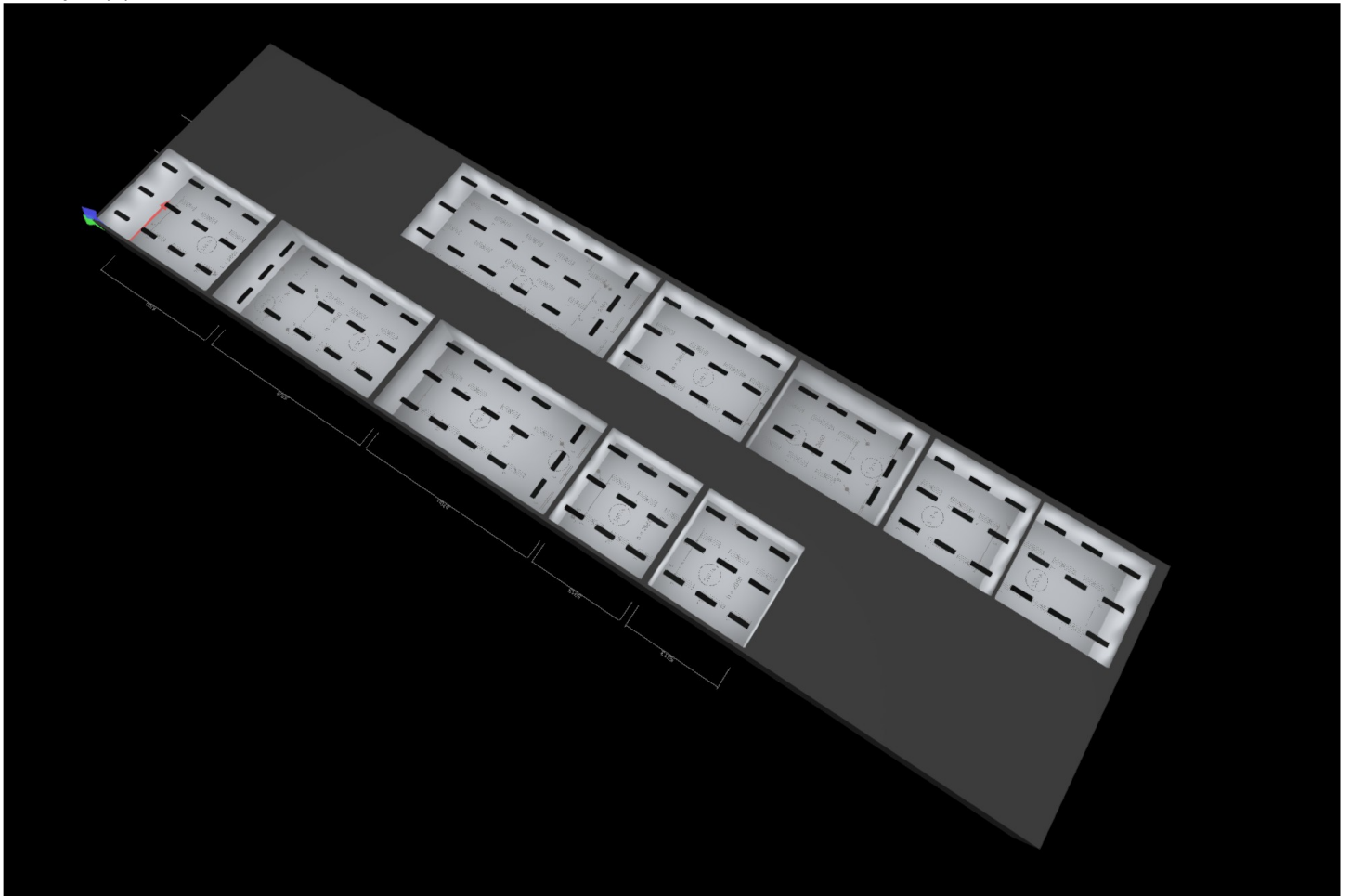
## Classroom Lighting Simulation Calculation-0508

Quantity	Luminaire (Luminous emittance)		
117	DIALux - Luminous emittance 1 Fitting: 1x Light output ratio: 100.07% Lamp luminous flux: 3653 lm Luminaire luminous flux: 3656 lm Power: 26.1 W Luminous efficacy: 140.1 lm/W  Colorimetric data 1x: CCT 4000 K, CRI 100	See our luminaire catalog for an image of the luminaire.	

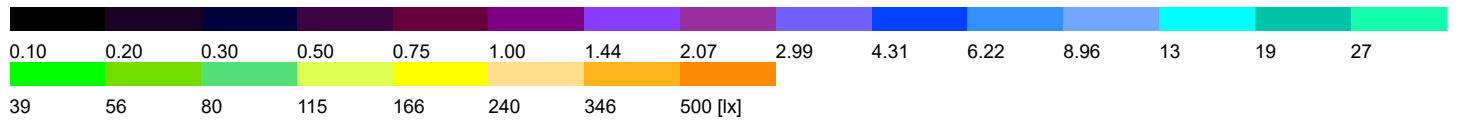
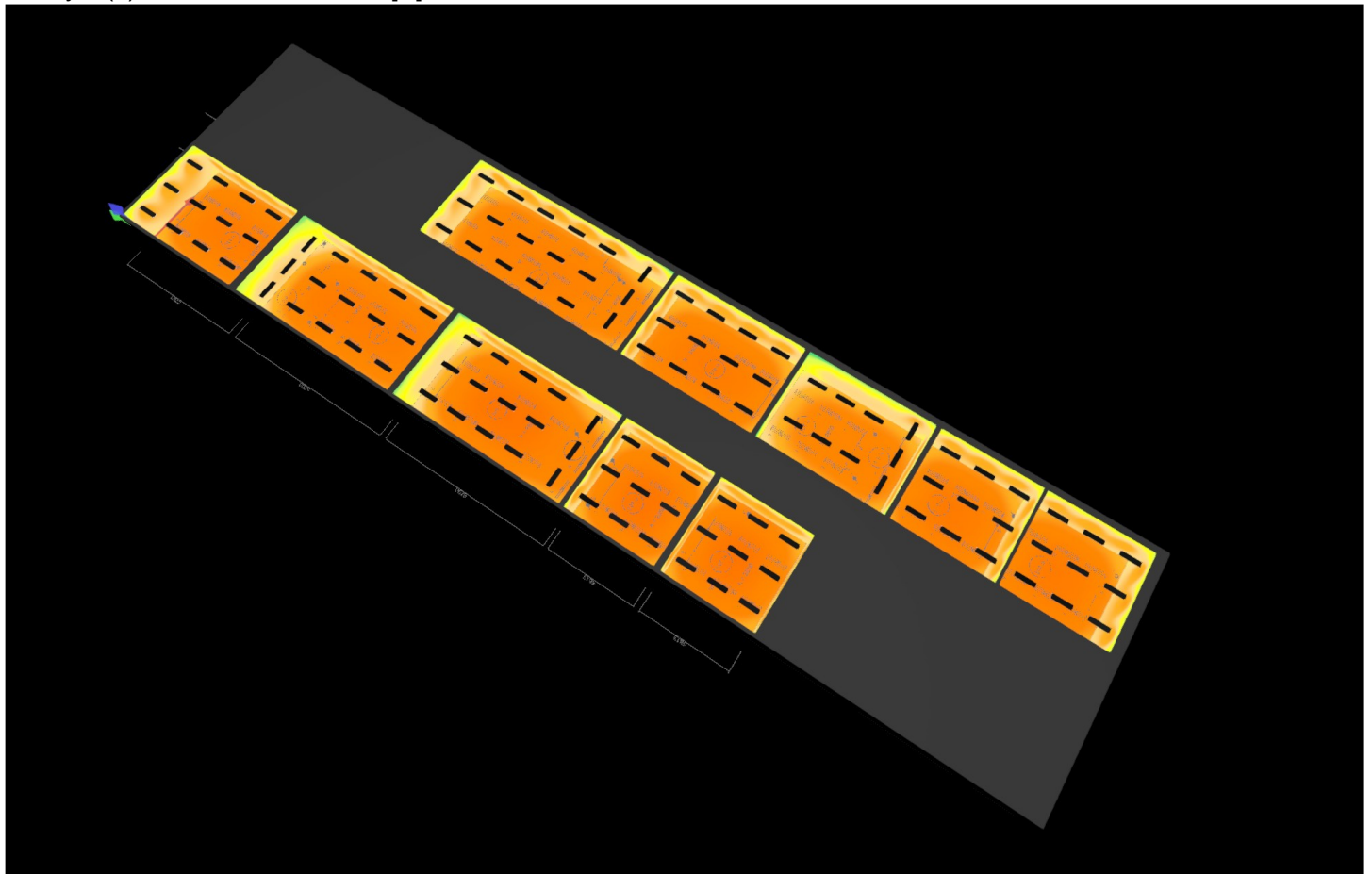
Total lamp luminous flux: 427401 lm, Total luminaire luminous flux: 427752 lm, Total Load: 3053.7 W, Luminous efficacy: 140.1 lm/W

## Classroom Lighting Simulation Calculation-0508

Storey 1 (2)

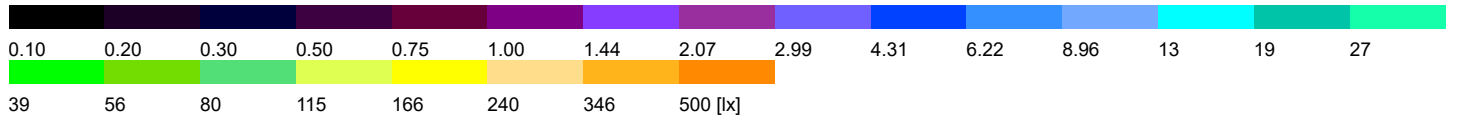
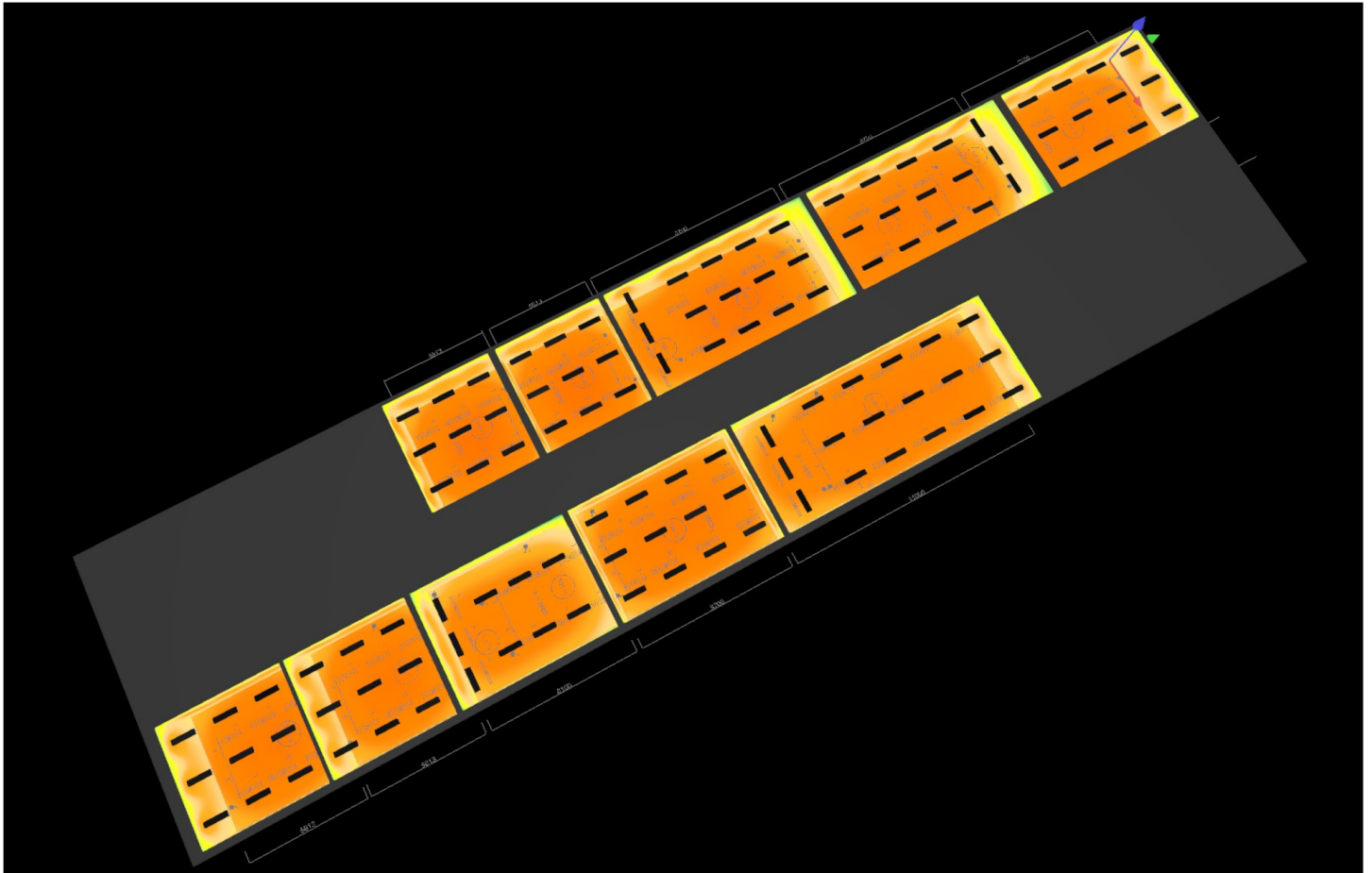


## Storey 1 (3), Illuminance values in [lx]

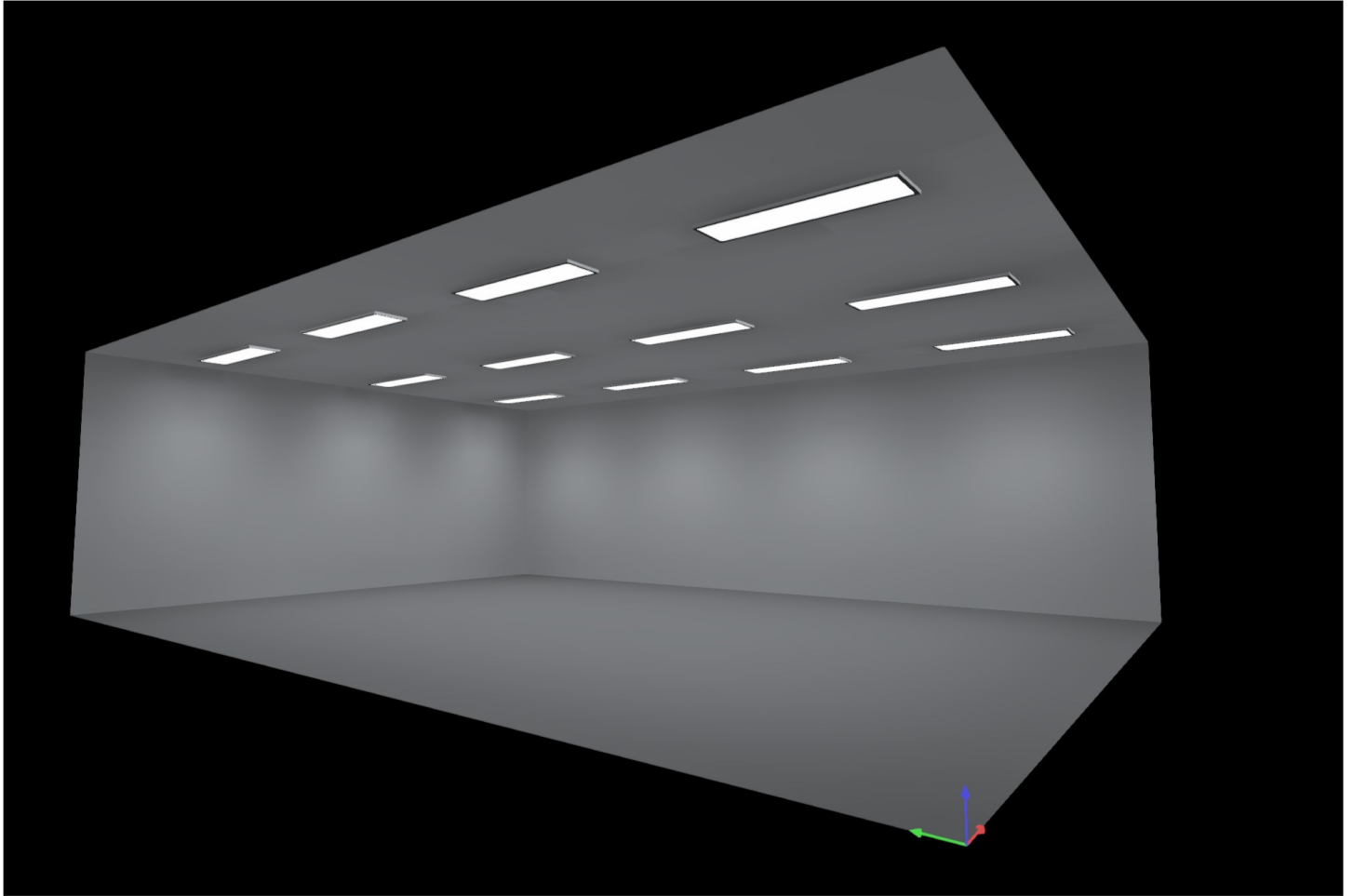




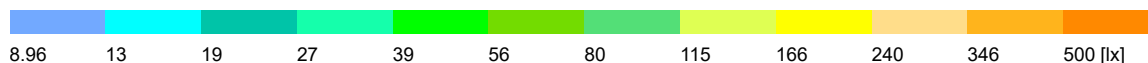
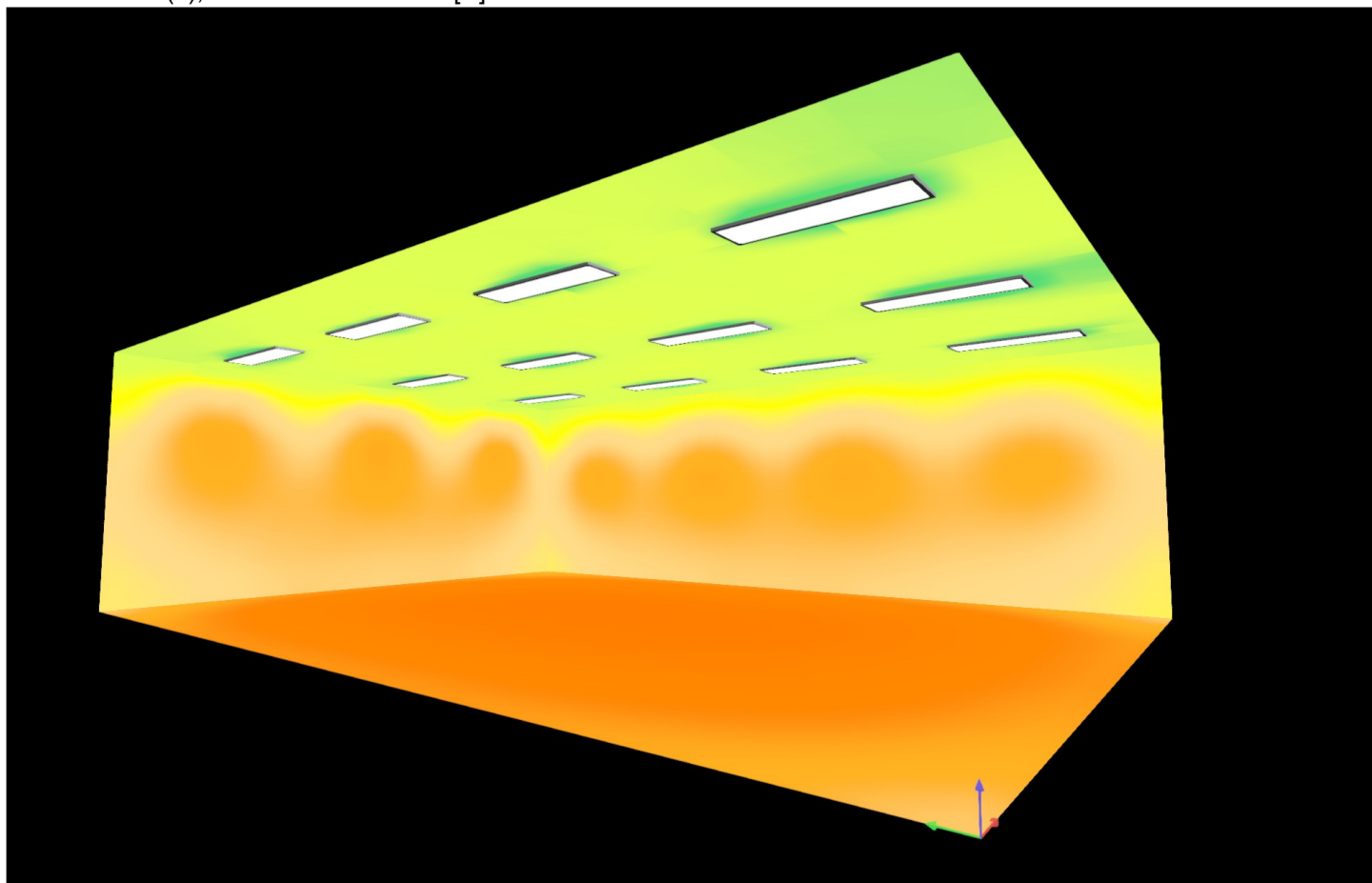
## Storey 1 (4), Illuminance values in [lx]



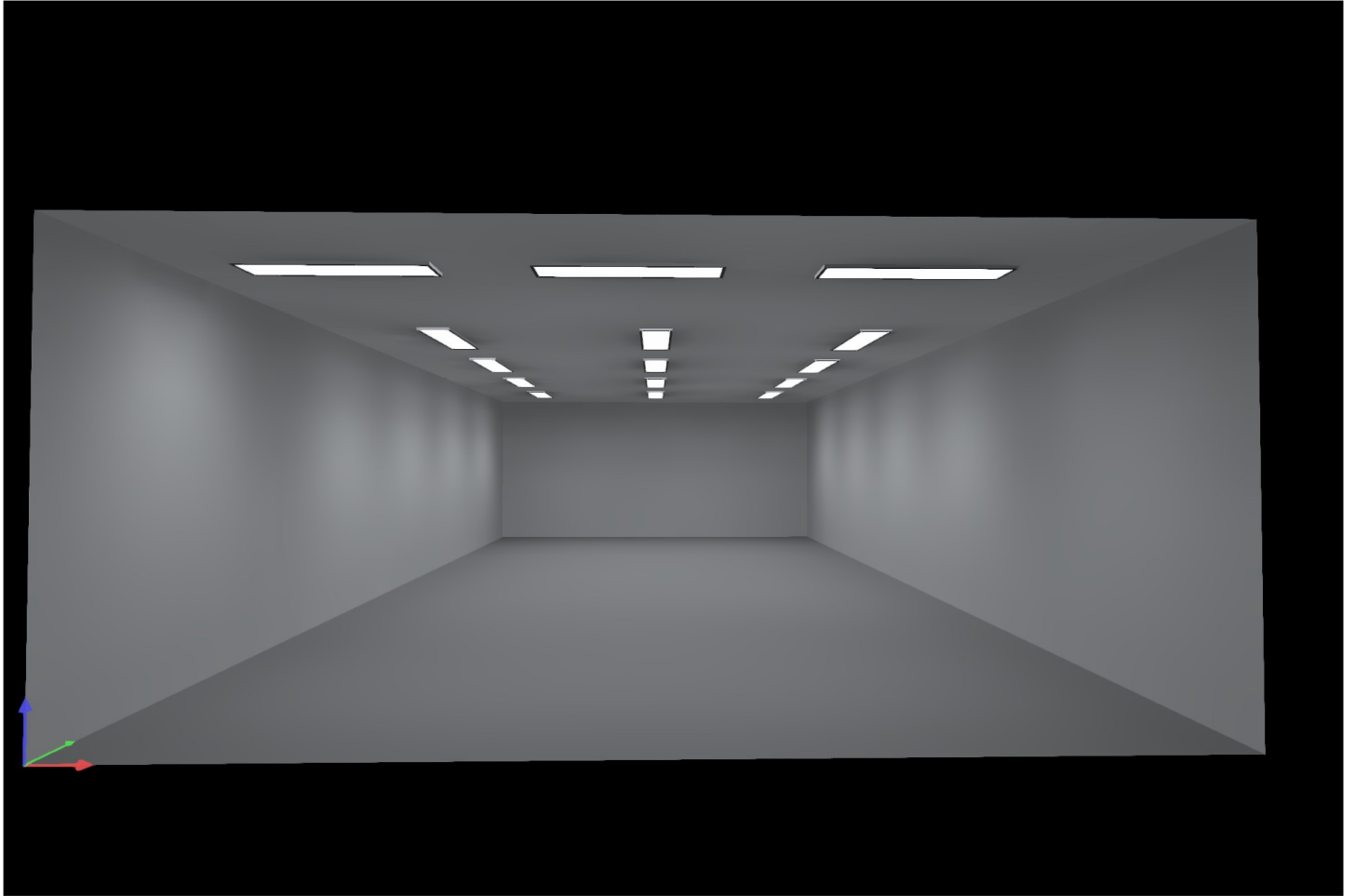
## ClassRoom 1 (6)



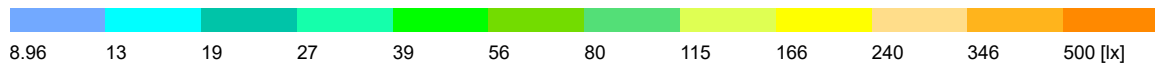
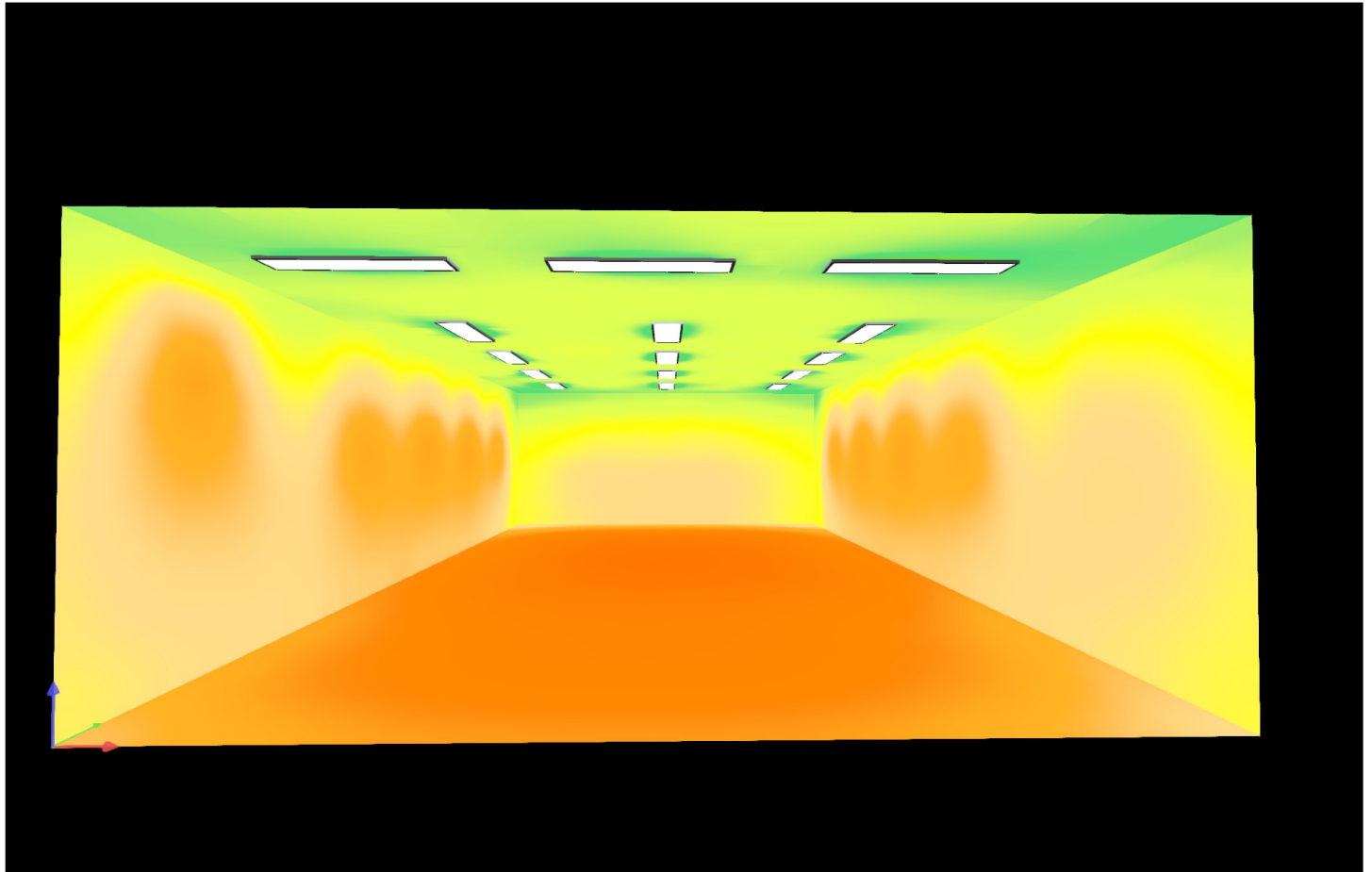
## ClassRoom 1 (7), Illuminance values in [lx]



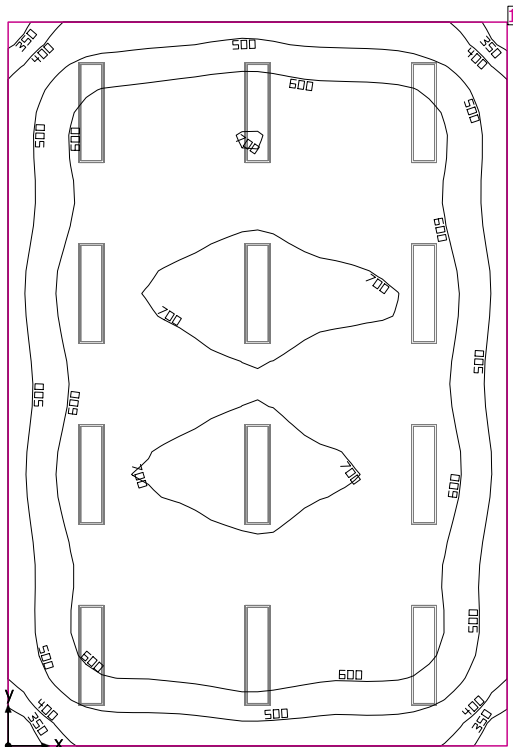
## ClassRoom 3 (9)



## ClassRoom 3 (8), Illuminance values in [lx]



## ClassRoom 1



Clearance height: 2.650 m, Reflection factors: Ceiling 70.0%, Walls 50.0%, Floor 20.0%, Light loss factor: 0.80

### Workplane

Surface	Result	Average (Target)	Min	Max	Min/average	Min/max
1 Workplane (ClassRoom 1)	Perpendicular illuminance (adaptive) [lx] Height: 0.800 m, Wall zone: 0.000 m	609 (≥ 500)	311	736	0.51	0.42

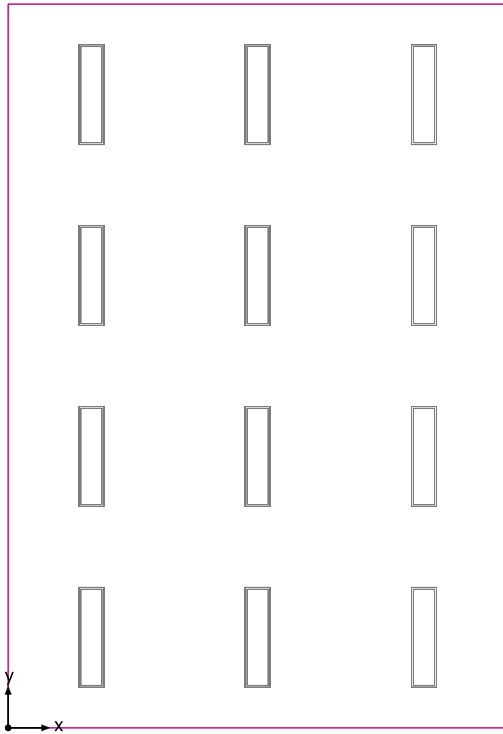
#	Luminaire	Φ(Luminaire) [lm]	Power [W]	Luminous efficacy [lm/W]
12	DIALux -	3656	26.1	140.1
Total via all luminaires		43872	313.2	140.1

Lighting power density: 6.01 W/m<sup>2</sup> = 0.99 W/m<sup>2</sup>/100 lx (Floor area of room 52.14 m<sup>2</sup>)

Consumption: 860 kWh/a of maximum 1850 kWh/a

The energy consumption quantities do not take into account light scenes and their dimming levels.

## Workplane (ClassRoom 1) / Perpendicular illuminance (adaptive)



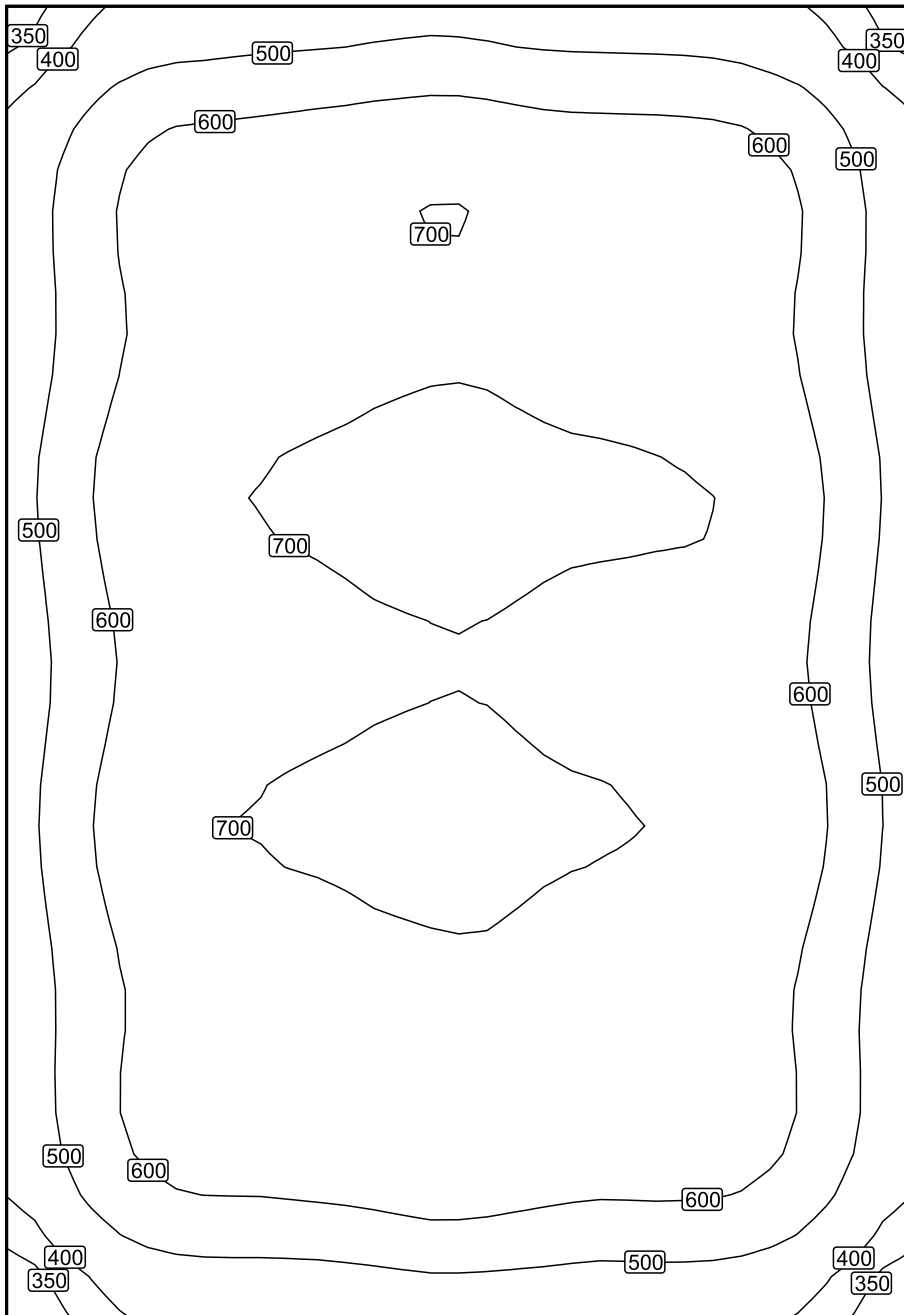
Workplane (ClassRoom 1): Perpendicular illuminance (adaptive) (Surface)

Light scene: Light scene 1

Average: 609 lx (Target:  $\geq 500$  lx), Min: 311 lx, Max: 736 lx, Min/average: 0.51, Min/max: 0.42

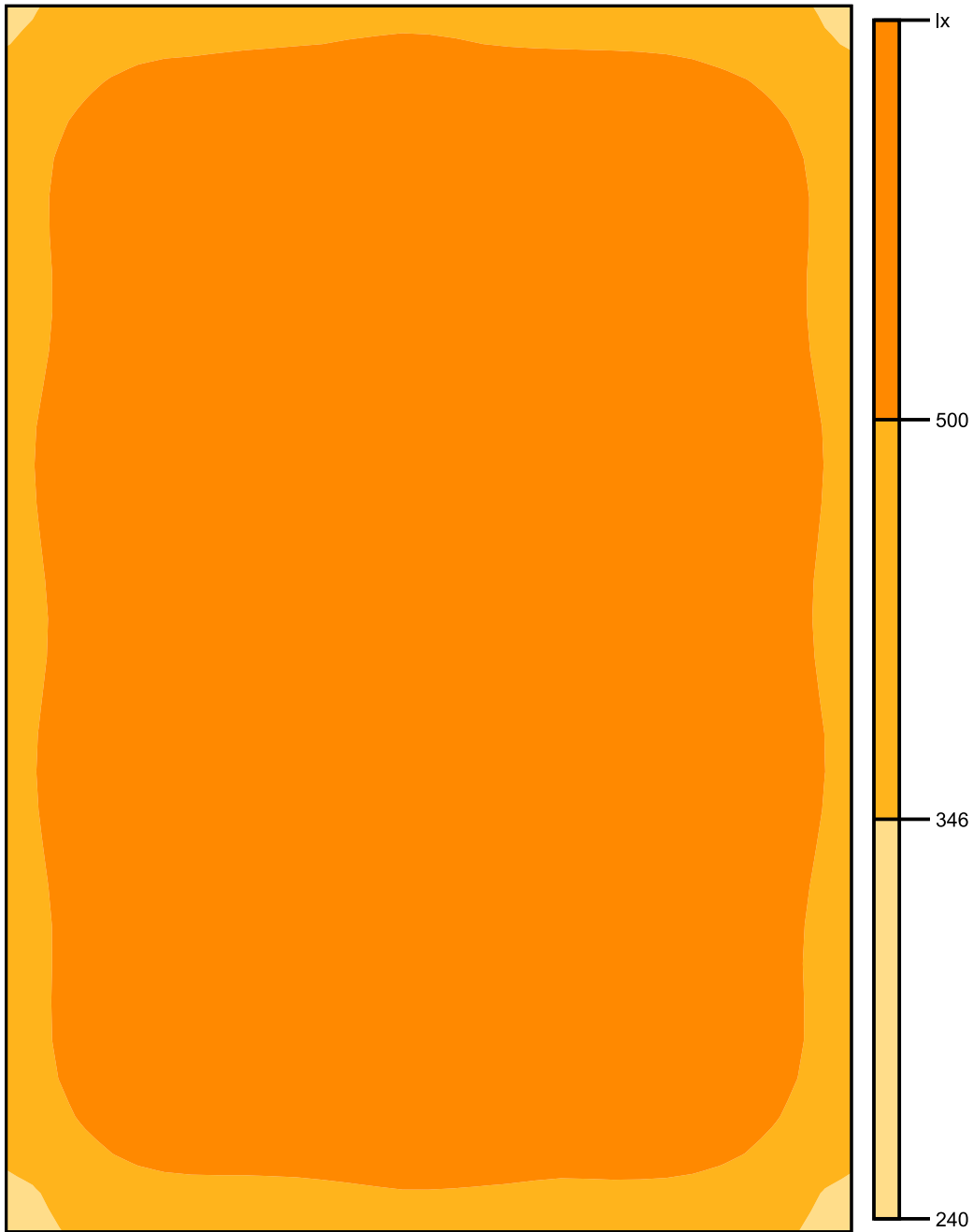
Height: 0.800 m, Wall zone: 0.000 m

## Isolines [lx]



Scale: 1 : 50

## False colors [lx]



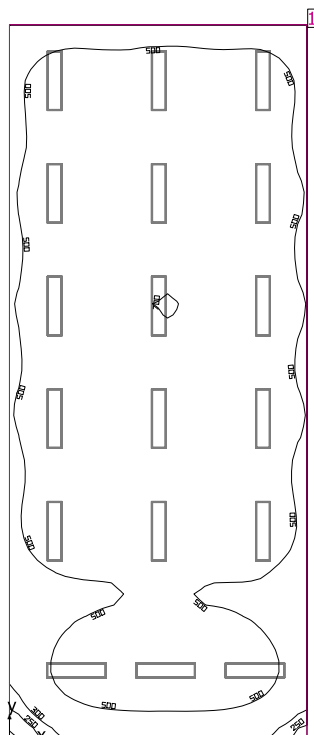
Scale: 1 : 50

## Value grid [lx]

+432	+520	+542	+557	+535	+523	+430
+530	+653	+678	+700	+670	+661	+532
+526	+645	+669	+687	+665	+650	+528
+560	+687	+711	733	+710	+692	+559
+545	+666	+691	+712	+688	+678	+549
+543	+669	+692	+711	+683	+673	+551
+558	+690	+709	733	+701	+688	+562
+527	+642	+659	+682	+656	+649	+525
+524	+646	+663	+689	+657	+653	+522
415	+508	+517	+541	+518	+514	+417

Scale: 1 : 50

## ClassRoom 10



Clearance height: 2.650 m, Reflection factors: Ceiling 70.0%, Walls 50.0%, Floor 20.0%, Light loss factor: 0.80

### Workplane

Surface	Result	Average (Target)	Min	Max	Min/average	Min/max
1 Workplane (ClassRoom 10)	Perpendicular illuminance (adaptive) [lx] Height: 0.800 m, Wall zone: 0.000 m	572 (≥ 500)	199	702	0.35	0.28

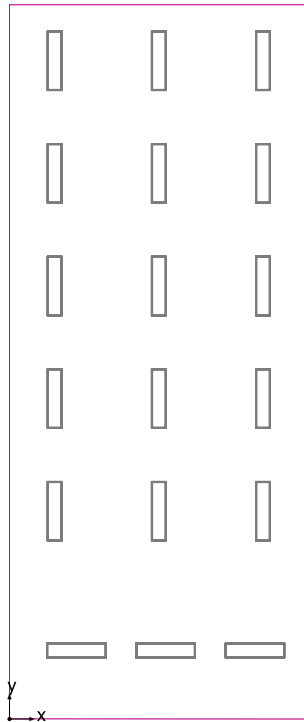
#	Luminaire	Φ(Luminaire) [lm]	Power [W]	Luminous efficacy [lm/W]
18	DIALux -	3656	26.1	140.1
Total via all luminaires		65808	469.8	140.1

Lighting power density:  $5.44 \text{ W/m}^2 = 0.95 \text{ W/m}^2/100 \text{ lx}$  (Floor area of room  $86.30 \text{ m}^2$ )

Consumption: 1300 kWh/a of maximum 3050 kWh/a

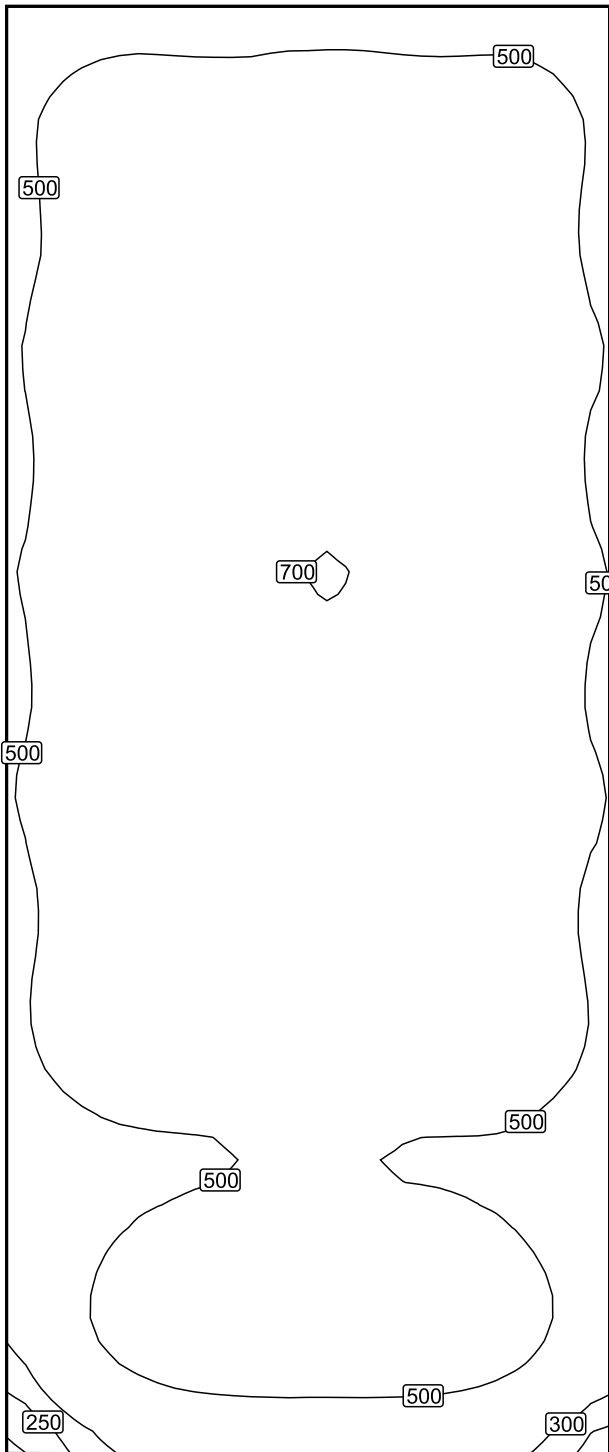
The energy consumption quantities do not take into account light scenes and their dimming levels.

## Workplane (ClassRoom 10) / Perpendicular illuminance (adaptive)



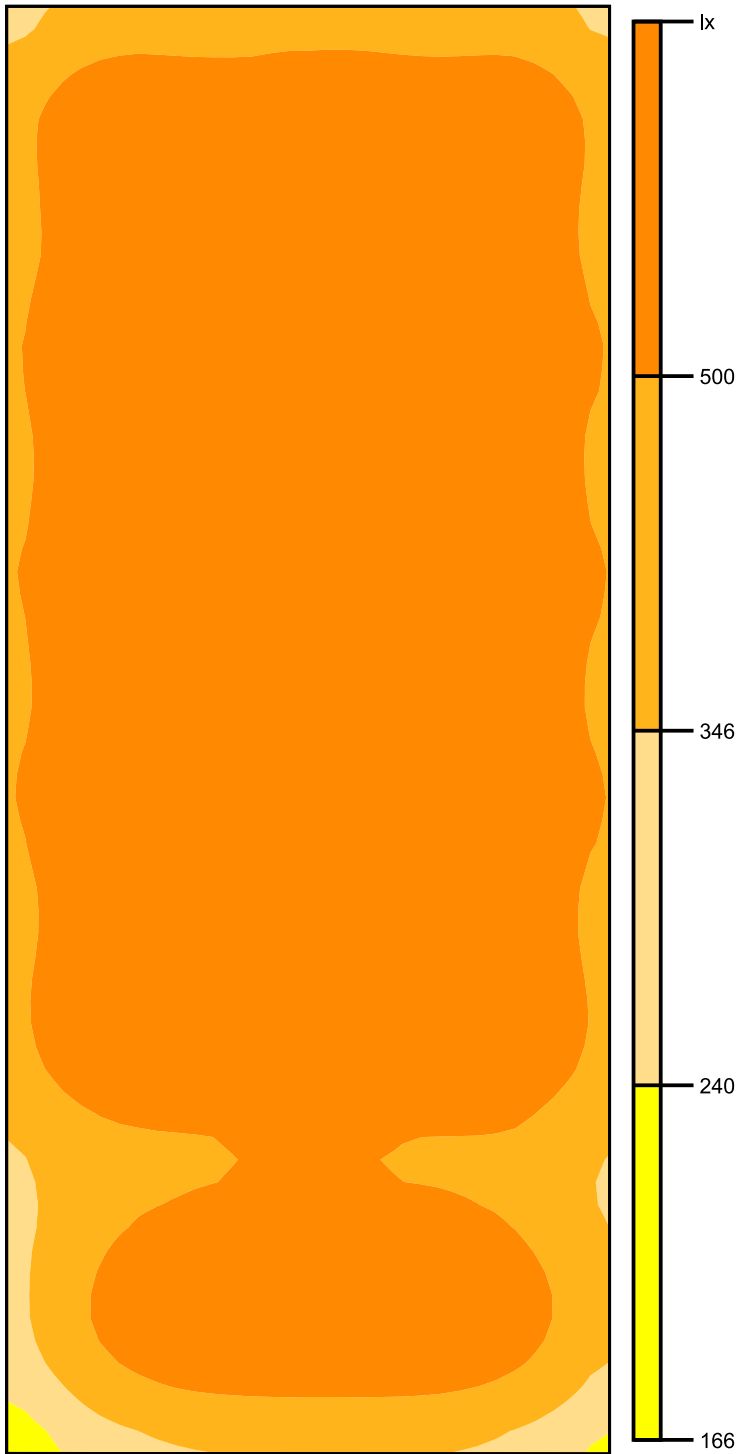
Workplane (ClassRoom 10): Perpendicular illuminance (adaptive) (Surface)  
Light scene: Light scene 1  
Average: 572 lx (Target:  $\geq 500$  lx), Min: 199 lx, Max: 702 lx, Min/average: 0.35, Min/max: 0.28  
Height: 0.800 m, Wall zone: 0.000 m

## Isolines [lx]



Scale: 1 : 75

## False colors [lx]



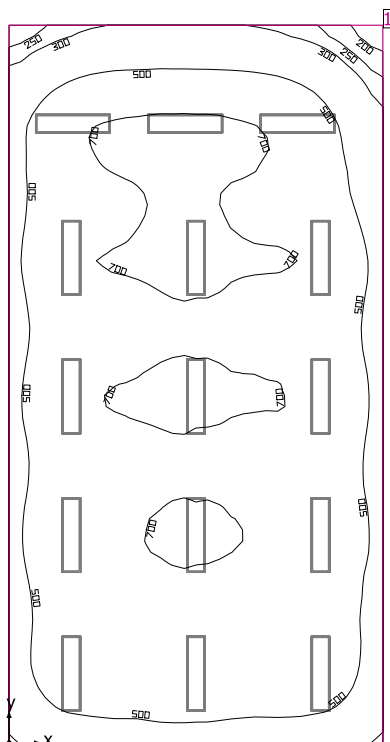
Scale: 1 : 75

## Value grid [lx]

+377	+450	+458	+453	+466	+465	+454	+455	+390
+488	+586	+590	+594	+616	+608	+594	+593	+502
+506	+604	+610	+617	+641	+631	+617	+612	+519
+497	+596	+603	+606	+631	+620	+604	+599	+507
+527	+639	+649	+653	+676	+659	+643	+640	+536
+542	+653	+664	+670	+690	+676	+660	+653	+551
+519	+618	+619	+623	+648	+638	+620	+613	+523
+522	+624	+627	+631	+658	+645	+627	+626	+529
+548	+661	+669	+675	(700)	+685	+664	+661	+557
+533	+639	+647	+653	+677	+663	+641	+637	+541
+519	+612	+623	+630	+648	+632	+618	+615	+521
+543	+640	+655	+663	+679	+662	+650	+645	+547
+541	+647	+658	+665	+684	+669	+652	+650	+549
+507	+606	+616	+620	+642	+626	+611	+606	+509
+513	+612	+619	+623	+649	+631	+612	+610	+515
+522	+629	+633	+637	+666	+648	+624	+627	+532
+456	+548	+559	+568	+589	+576	+557	+557	+468
+371	+455	+484	+502	+514	+502	+490	+474	+387
+353	+468	+532	+557	+566	+560	+545	+499	+391
+373	+532	+627	+656	+663	+661	+645	+581	+440
+343	+493	+584	+612	+617	+617	+604	+541	+408
(248)	+342	+399	+420	+426	+426	+415	+375	+291

Scale: 1 : 75

## ClassRoom 2



Clearance height: 2.650 m, Reflection factors: Ceiling 70.0%, Walls 50.0%, Floor 20.0%, Light loss factor: 0.80

### Workplane

Surface	Result	Average (Target)	Min	Max	Min/average	Min/max
1 Workplane (ClassRoom 2)	Perpendicular illuminance (adaptive) [lx] Height: 0.800 m, Wall zone: 0.000 m	598 (≥ 500)	173	739	0.29	0.23

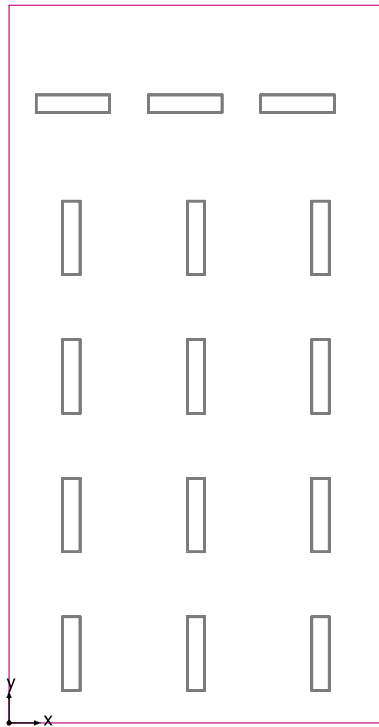
#	Luminaire	Φ(Luminaire) [lm]	Power [W]	Luminous efficacy [lm/W]
15	DIALux -	3656	26.1	140.1
Total via all luminaires		54840	391.5	140.1

Lighting power density:  $5.69 \text{ W/m}^2 = 0.95 \text{ W/m}^2/100 \text{ lx}$  (Floor area of room  $68.83 \text{ m}^2$ )

Consumption: 1100 kWh/a of maximum 2450 kWh/a

The energy consumption quantities do not take into account light scenes and their dimming levels.

## Workplane (ClassRoom 2) / Perpendicular illuminance (adaptive)



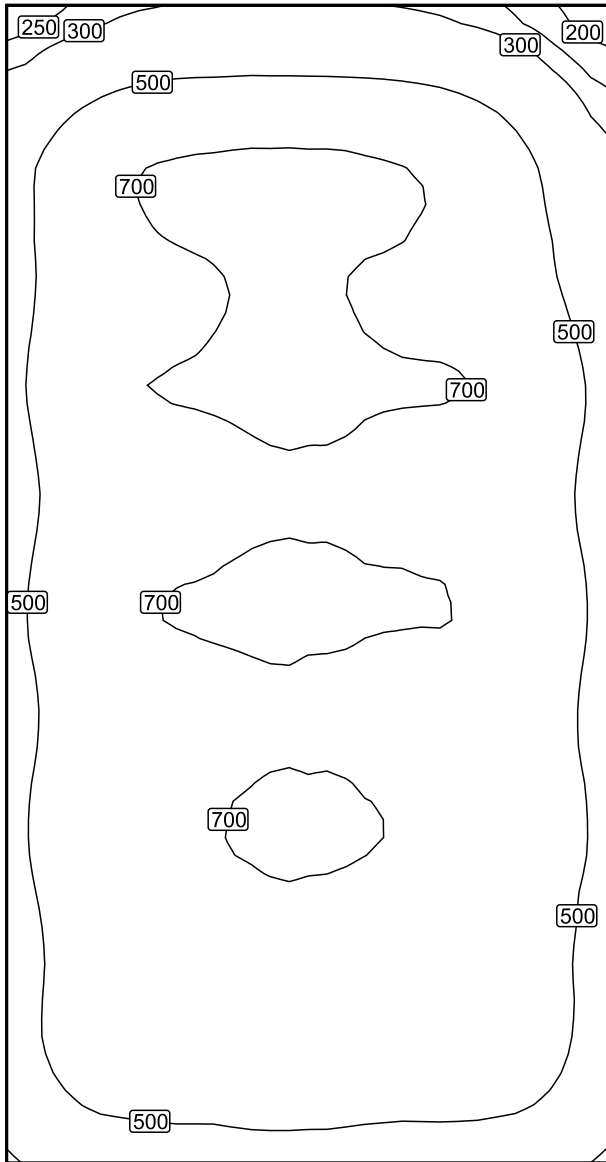
Workplane (ClassRoom 2): Perpendicular illuminance (adaptive) (Surface)

Light scene: Light scene 1

Average: 598 lx (Target:  $\geq 500$  lx), Min: 173 lx, Max: 739 lx, Min/average: 0.29, Min/max: 0.23

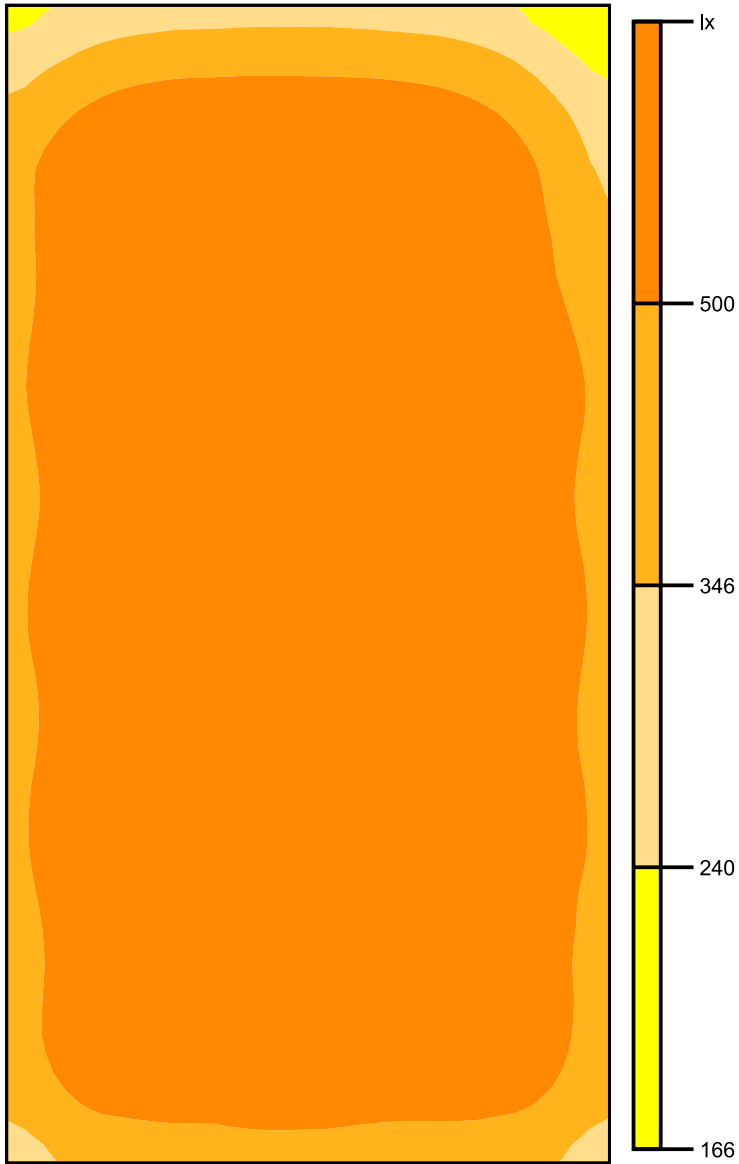
Height: 0.800 m, Wall zone: 0.000 m

## Isolines [lx]



Scale: 1 : 75

## False colors [lx]



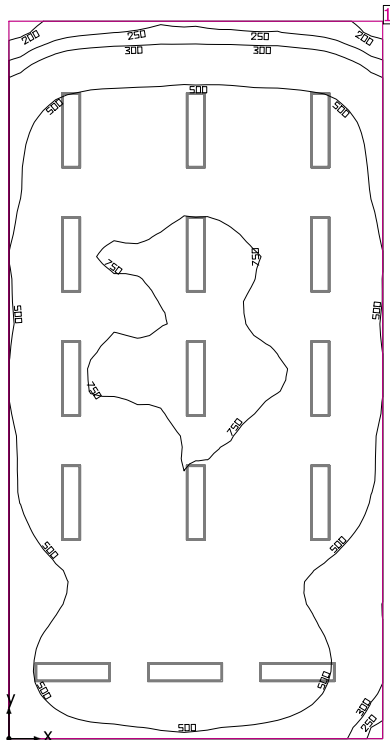
Scale: 1 : 75

## Value grid [lx]

+359	+450	+458	+434	+292
+585	+721	+736	+691	+476
+580	+683	+710	+676	+534
+603	+698	+721	+697	+593
+572	+662	+690	+669	+566
+598	+696	+708	+694	+594
+576	+666	+691	+664	+574
+586	+678	+702	+676	+584
+553	+653	+669	+650	+556
+472	+550	+568	+545	+471

Scale: 1 : 75

## ClassRoom 3



Clearance height: 2.650 m, Reflection factors: Ceiling 70.0%, Walls 50.0%, Floor 20.0%, Light loss factor: 0.80

### Workplane

Surface	Result	Average (Target)	Min	Max	Min/average	Min/max
1 Workplane (ClassRoom 3)	Perpendicular illuminance (adaptive) [lx] Height: 0.800 m, Wall zone: 0.000 m	600 (≥ 500)	181	787	0.30	0.23

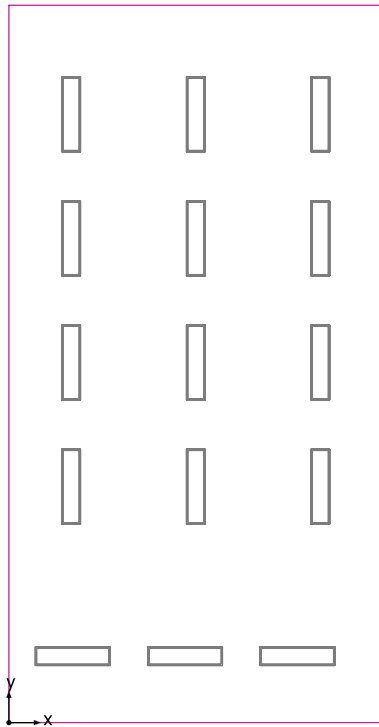
#	Luminaire	Φ(Luminaire) [lm]	Power [W]	Luminous efficacy [lm/W]
15	DIALux -	3656	26.1	140.1
Total via all luminaires		54840	391.5	140.1

Lighting power density: 5.69 W/m<sup>2</sup> = 0.95 W/m<sup>2</sup>/100 lx (Floor area of room 68.81 m<sup>2</sup>)

Consumption: 1100 kWh/a of maximum 2450 kWh/a

The energy consumption quantities do not take into account light scenes and their dimming levels.

## Workplane (ClassRoom 3) / Perpendicular illuminance (adaptive)



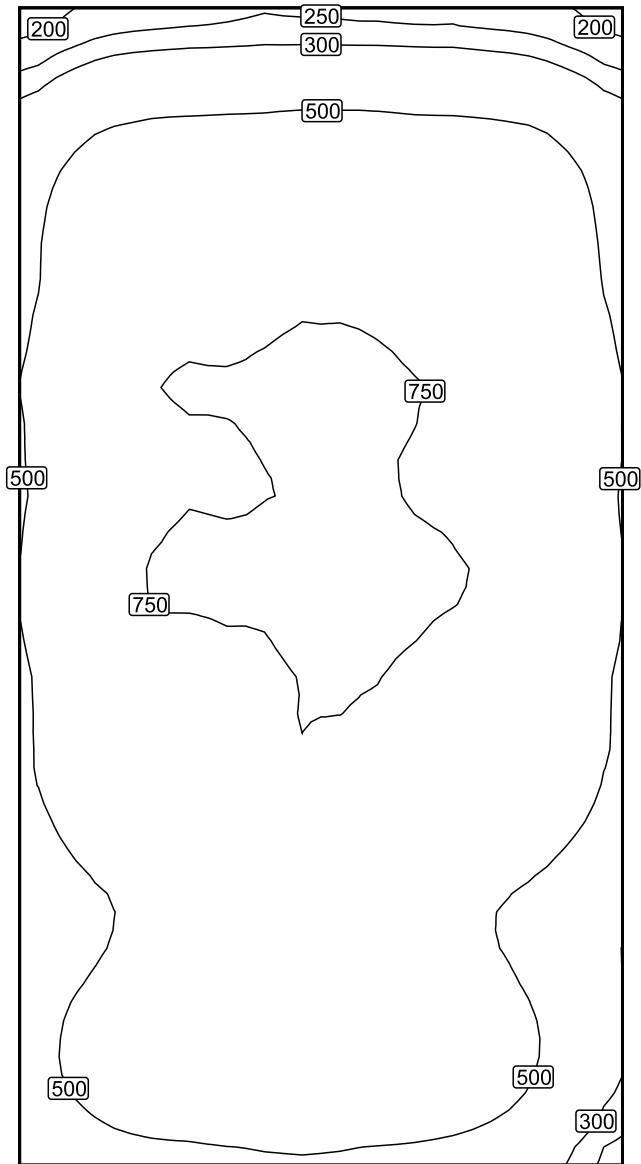
Workplane (ClassRoom 3): Perpendicular illuminance (adaptive) (Surface)

Light scene: Light scene 1

Average: 600 lx (Target:  $\geq 500$  lx), Min: 181 lx, Max: 787 lx, Min/average: 0.30, Min/max: 0.23

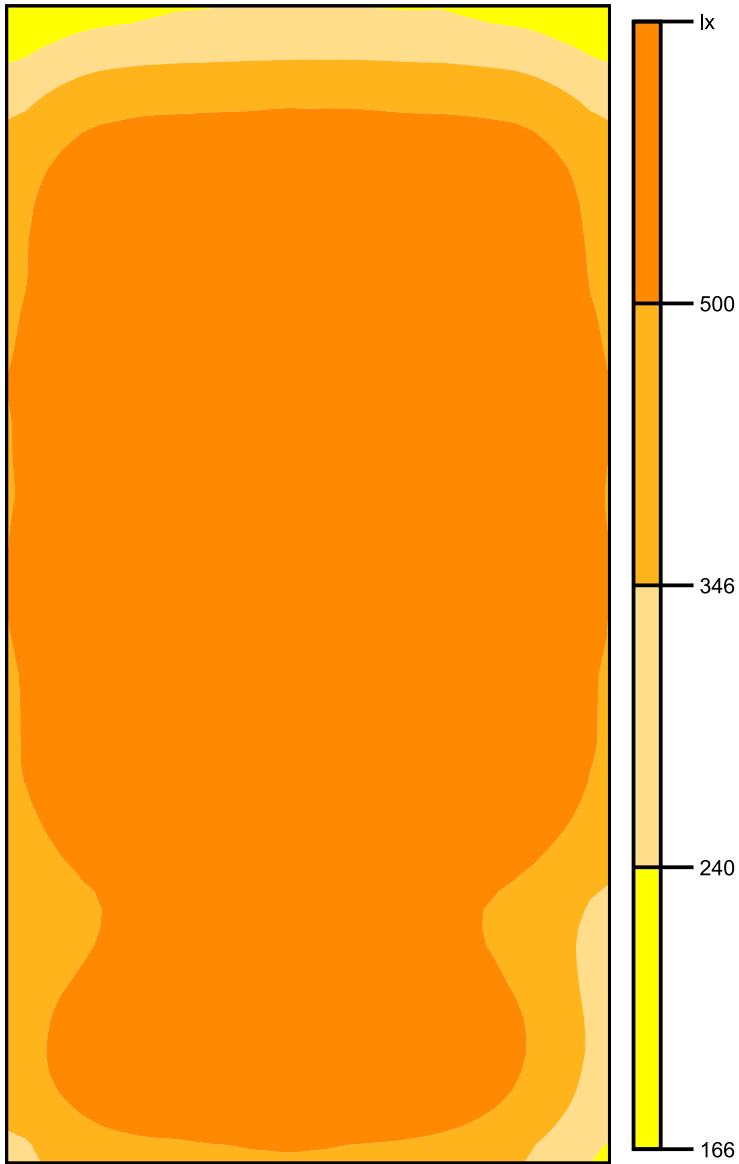
Height: 0.800 m, Wall zone: 0.000 m

## Isolines [lx]



Scale: 1 : 75

## False colors [lx]



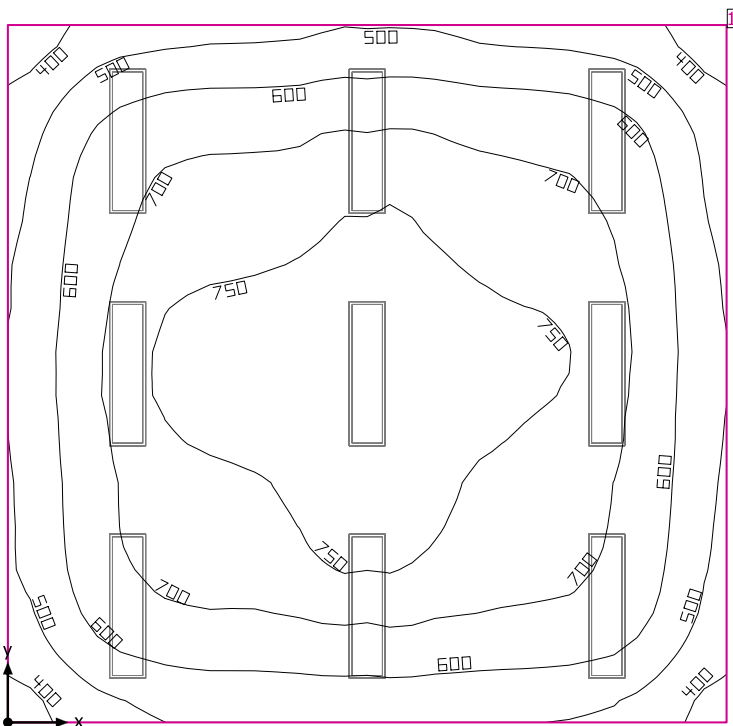
Scale: 1 : 75

## Value grid [lx]

+298	+348	+359	+350	+297
+556	+654	+671	+649	+557
+615	+715	+735	+711	+616
+637	+751	+770	+742	+642
+635	+756	+765	+749	+641
+638	+737	+766	+738	+632
+621	+723	+740	+712	+616
+483	+562	+584	+556	+457
+504	+622	+637	+600	+419
+494	+608	+626	+587	+393

Scale: 1 : 75

## ClassRoom 4



Clearance height: 2.650 m, Reflection factors: Ceiling 70.0%, Walls 50.0%, Floor 20.0%, Light loss factor: 0.80

### Workplane

Surface	Result	Average (Target)	Min	Max	Min/average	Min/max
1 Workplane (ClassRoom 4)	Perpendicular illuminance (adaptive) [lx] Height: 0.800 m, Wall zone: 0.000 m	652 (≥ 500)	340	795	0.52	0.43

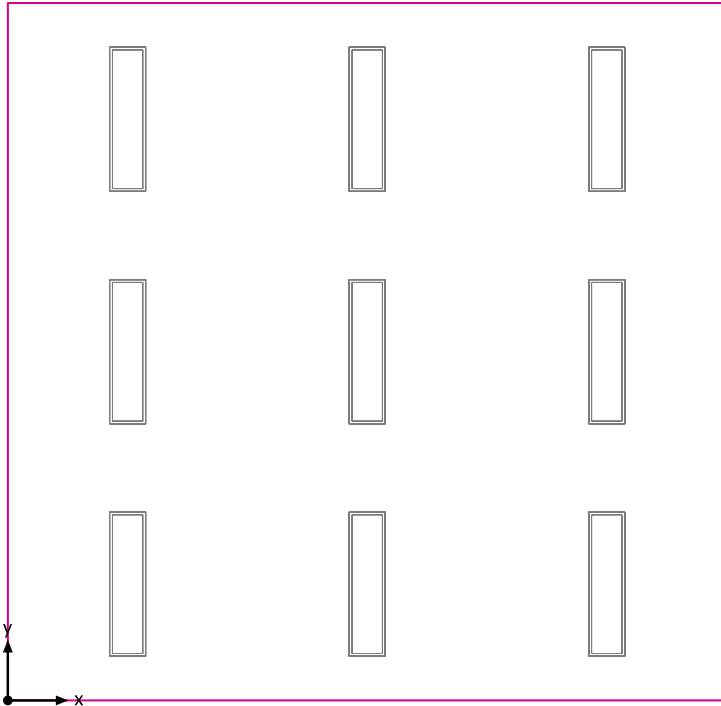
# Luminaire	Φ(Luminaire) [lm]	Power [W]	Luminous efficacy [lm/W]
9 DIALux -	3656	26.1	140.1
Total via all luminaires	32904	234.9	140.1

Lighting power density:  $6.75 \text{ W/m}^2 = 1.04 \text{ W/m}^2/100 \text{ lx}$  (Floor area of room  $34.78 \text{ m}^2$ )

Consumption: 650 kWh/a of maximum 1250 kWh/a

The energy consumption quantities do not take into account light scenes and their dimming levels.

## Workplane (ClassRoom 4) / Perpendicular illuminance (adaptive)



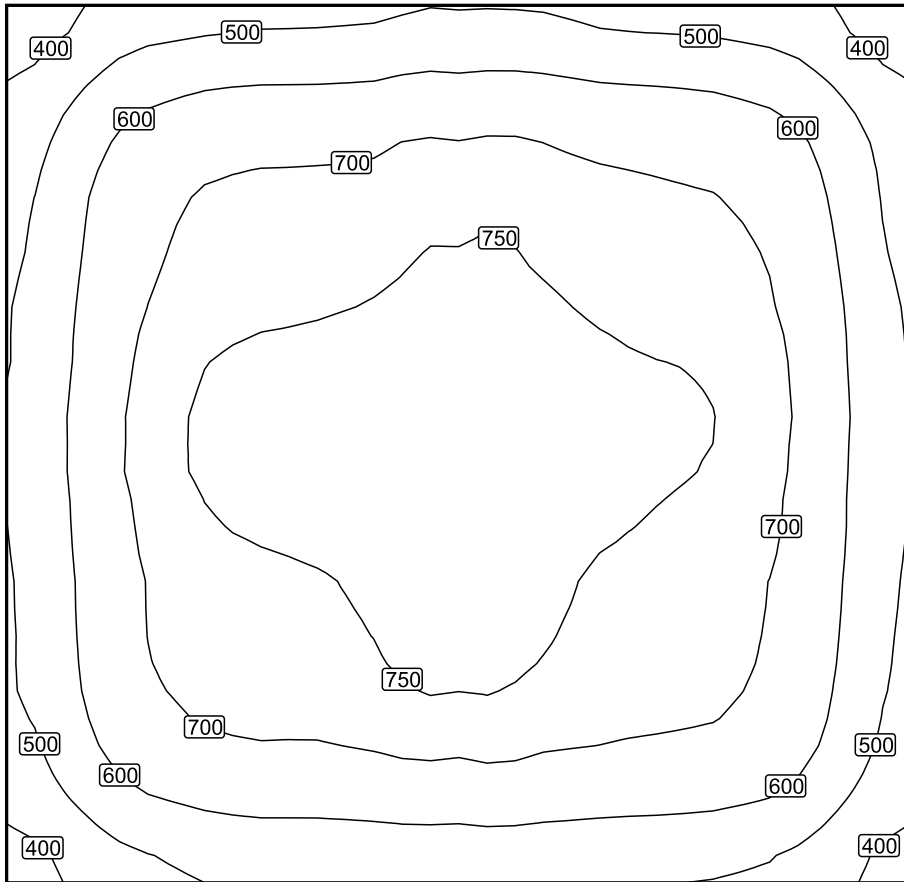
Workplane (ClassRoom 4): Perpendicular illuminance (adaptive) (Surface)

Light scene: Light scene 1

Average: 652 lx (Target:  $\geq 500$  lx), Min: 340 lx, Max: 795 lx, Min/average: 0.52, Min/max: 0.43

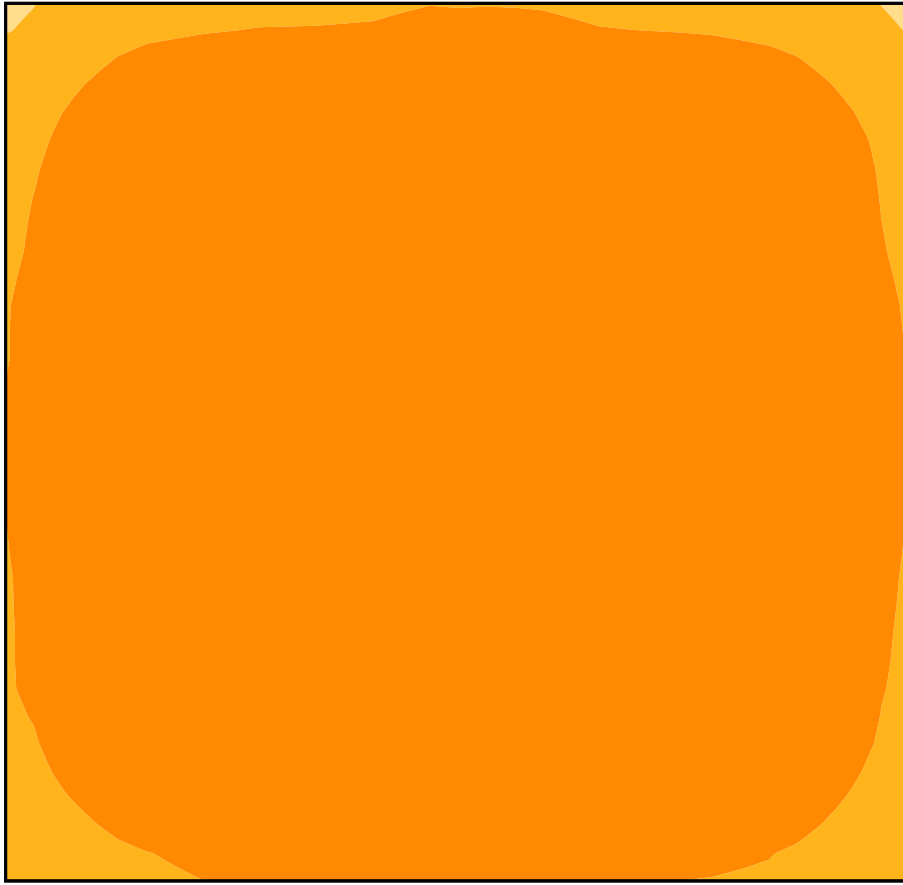
Height: 0.800 m, Wall zone: 0.000 m

## Isolines [lx]



Scale: 1 : 50

## False colors [lx]



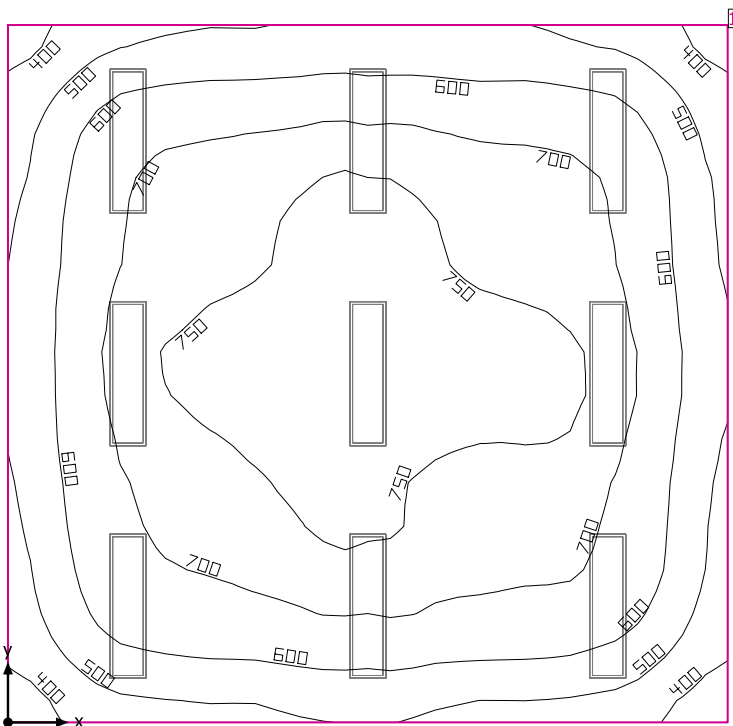
Scale: 1 : 50

## Value grid [lx]

+417	+519	+545	+550	+564	+559	+542	+516	+418
+518	+652	+687	+693	+710	+702	+683	+655	+521
+553	+694	+729	+737	+751	+741	+724	+699	+552
+569	+718	+755	+766	+776	+764	+746	+722	+571
+579	+731	+768	+778	+791	+780	+758	+727	+576
+571	+717	+751	+761	+776	+766	+742	+714	+570
+563	+706	+739	+747	+764	+749	+730	+700	+558
+536	+673	+702	+710	+721	+711	+698	+672	+532
+437	+540	+572	+575	+580	+576	+566	+545	+439

Scale: 1 : 50

## ClassRoom 5



Clearance height: 2.650 m, Reflection factors: Ceiling 70.0%, Walls 50.0%, Floor 20.0%, Light loss factor: 0.80

### Workplane

Surface	Result	Average (Target)	Min	Max	Min/average	Min/max
1 Workplane (ClassRoom 5)	Perpendicular illuminance (adaptive) [lx] Height: 0.800 m, Wall zone: 0.000 m	650 (≥ 500)	341	790	0.52	0.43

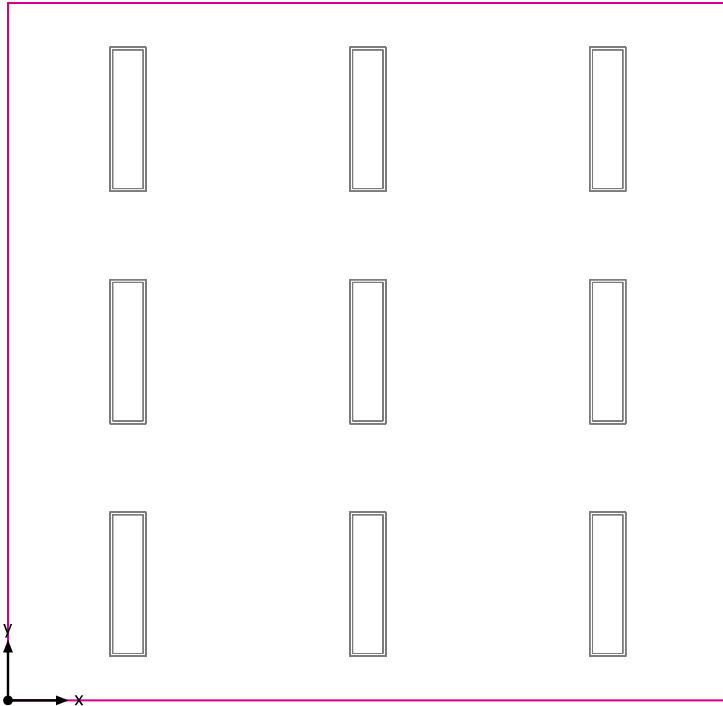
# Luminaire	Φ(Luminaire) [lm]	Power [W]	Luminous efficacy [lm/W]
9 DIALux -	3656	26.1	140.1
<b>Total via all luminaires</b>	<b>32904</b>	<b>234.9</b>	<b>140.1</b>

Lighting power density: 6.74 W/m<sup>2</sup> = 1.04 W/m<sup>2</sup>/100 lx (Floor area of room 34.83 m<sup>2</sup>)

Consumption: 650 kWh/a of maximum 1250 kWh/a

The energy consumption quantities do not take into account light scenes and their dimming levels.

## Workplane (ClassRoom 5) / Perpendicular illuminance (adaptive)



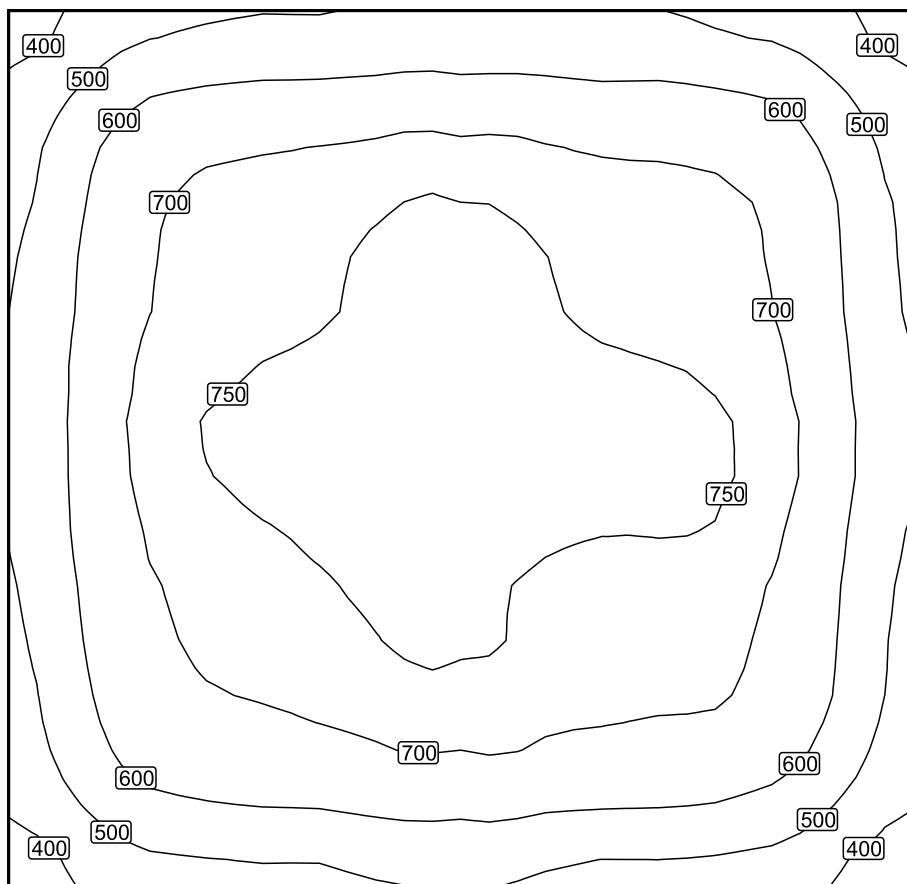
Workplane (ClassRoom 5): Perpendicular illuminance (adaptive) (Surface)

Light scene: Light scene 1

Average: 650 lx (Target:  $\geq 500$  lx), Min: 341 lx, Max: 790 lx, Min/average: 0.52, Min/max: 0.43

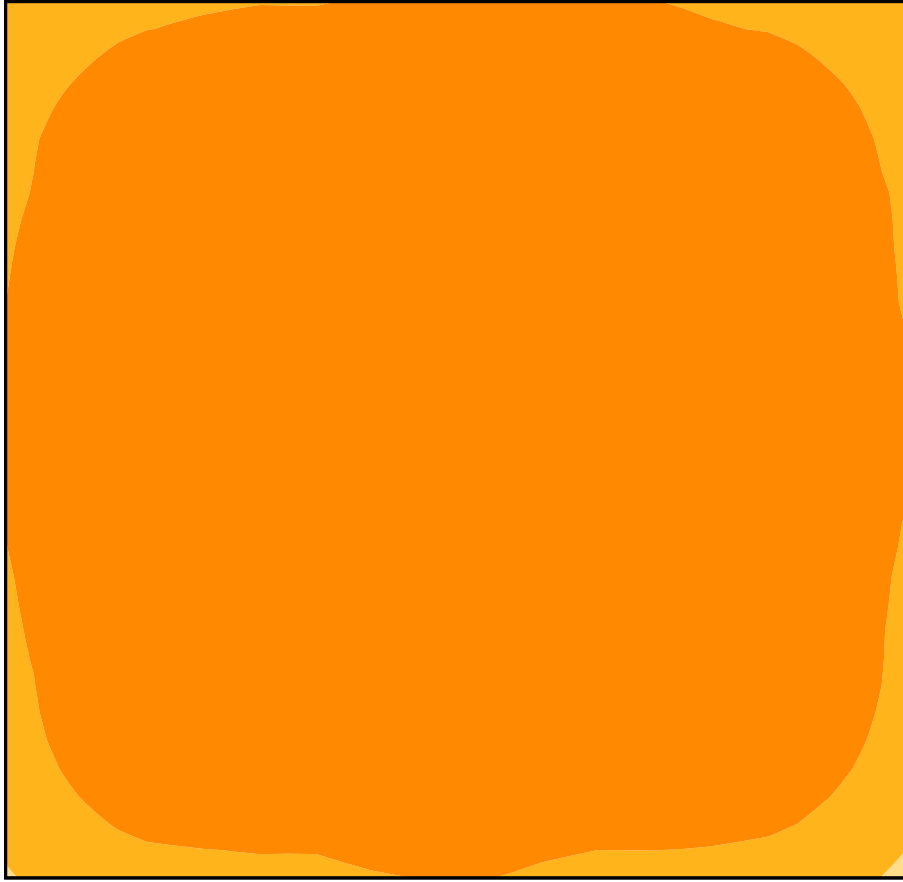
Height: 0.800 m, Wall zone: 0.000 m

## Isolines [lx]



Scale: 1 : 50

## False colors [lx]



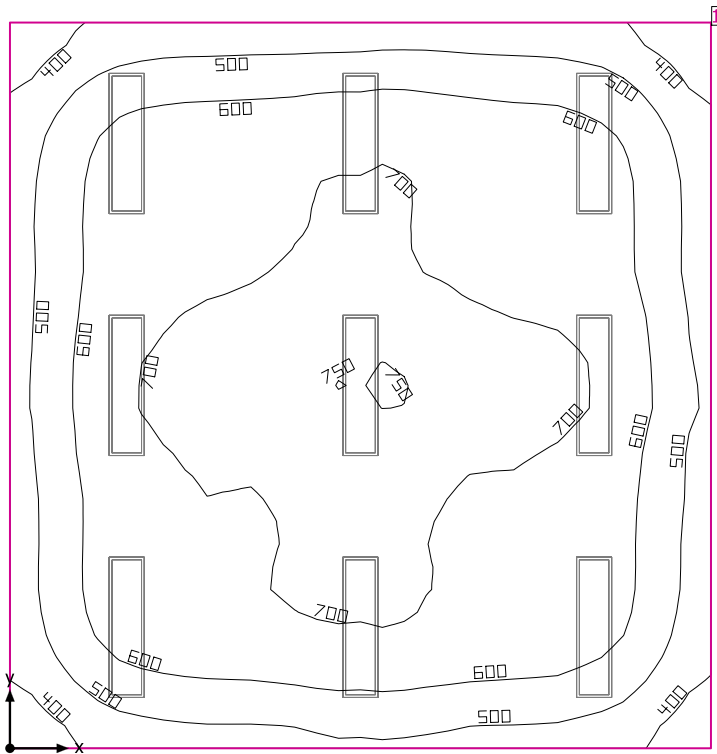
Scale: 1 : 50

## Value grid [lx]

+438	+540	+562	+569	+572	+568	+564	+536	+436
+535	+673	+701	+715	+722	+707	+696	+667	+531
+564	+701	+731	+752	+765	+746	+731	+701	+558
+579	+716	+746	+764	+775	+760	+747	+718	+572
+582	+727	+761	+778	(783)	+770	+764	+734	+585
+574	+708	+742	+766	+771	+751	+747	+715	+566
+554	+690	+716	+743	+756	+733	+722	+693	+550
+520	+653	+677	+696	+707	+694	+682	+654	+519
+426	+526	+545	+557	+566	+551	+544	+518	(416)

Scale: 1 : 50

## ClassRoom 6



Clearance height: 2.650 m, Reflection factors: Ceiling 70.0%, Walls 50.0%, Floor 20.0%, Light loss factor: 0.80

### Workplane

Surface	Result	Average (Target)	Min	Max	Min/average	Min/max
1 Workplane (ClassRoom 6)	Perpendicular illuminance (adaptive) [lx] Height: 0.800 m, Wall zone: 0.000 m	616 (≥ 500)	318	751	0.52	0.42

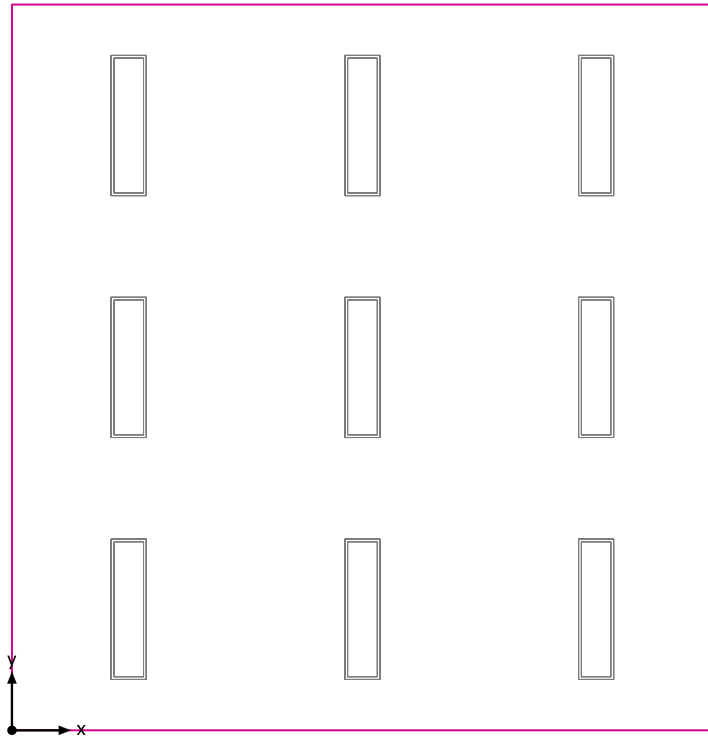
# Luminaire	Φ(Luminaire) [lm]	Power [W]	Luminous efficacy [lm/W]
9 DIALux -	3656	26.1	140.1
<b>Total via all luminaires</b>	<b>32904</b>	<b>234.9</b>	<b>140.1</b>

Lighting power density:  $6.30 \text{ W/m}^2 = 1.02 \text{ W/m}^2/100 \text{ lx}$  (Floor area of room  $37.27 \text{ m}^2$ )

Consumption: 650 kWh/a of maximum 1350 kWh/a

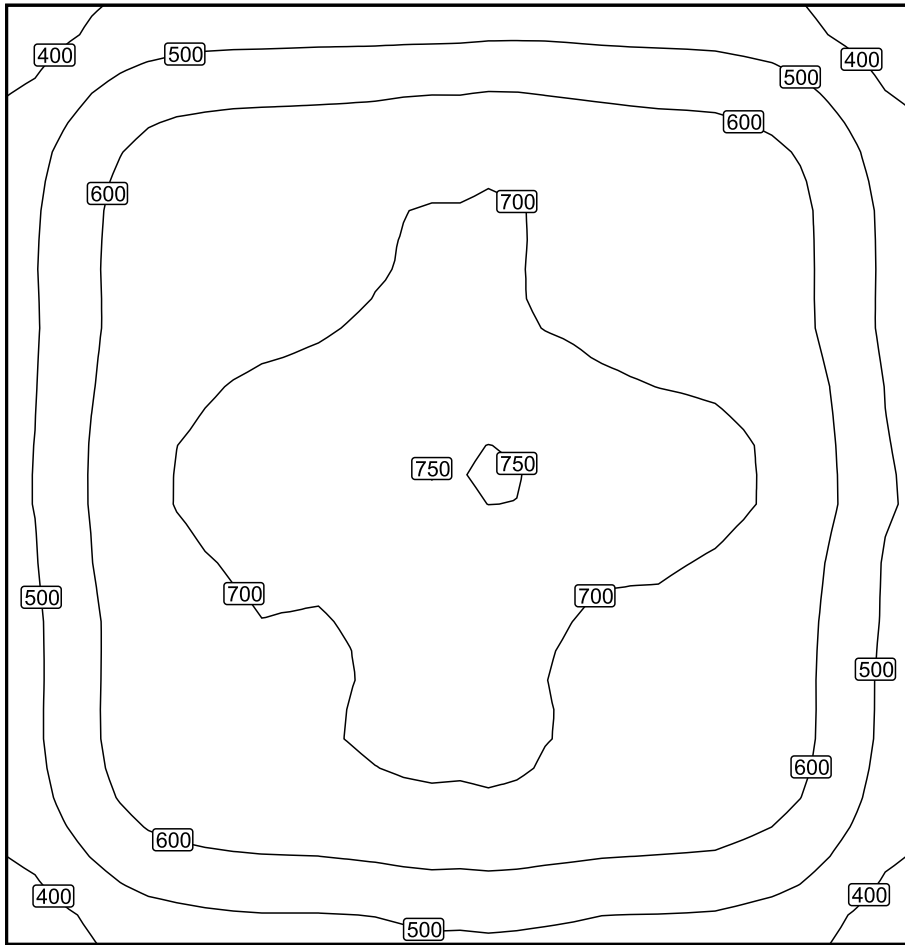
The energy consumption quantities do not take into account light scenes and their dimming levels.

## Workplane (ClassRoom 6) / Perpendicular illuminance (adaptive)



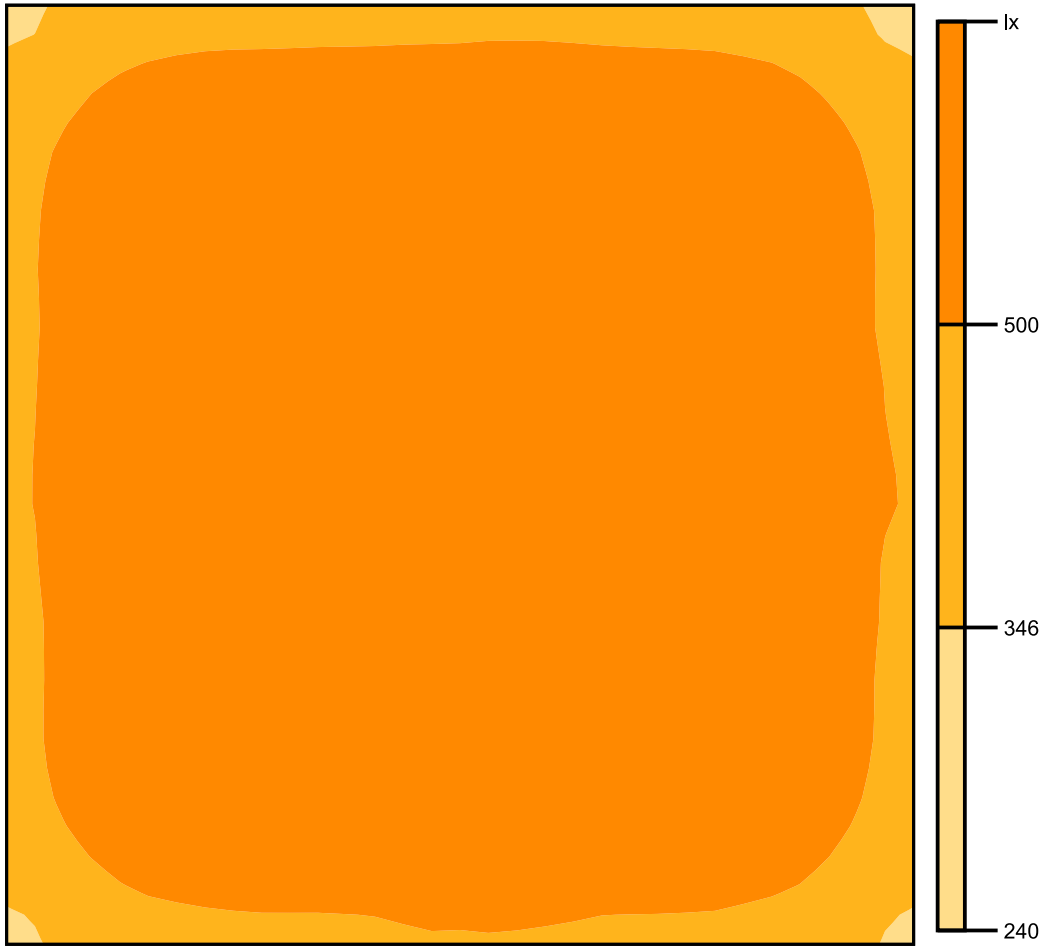
Workplane (ClassRoom 6): Perpendicular illuminance (adaptive) (Surface)  
Light scene: Light scene 1  
Average: 616 lx (Target:  $\geq 500$  lx), Min: 318 lx, Max: 751 lx, Min/average: 0.52, Min/max: 0.42  
Height: 0.800 m, Wall zone: 0.000 m

## Isolines [lx]



Scale: 1 : 50

## False colors [lx]



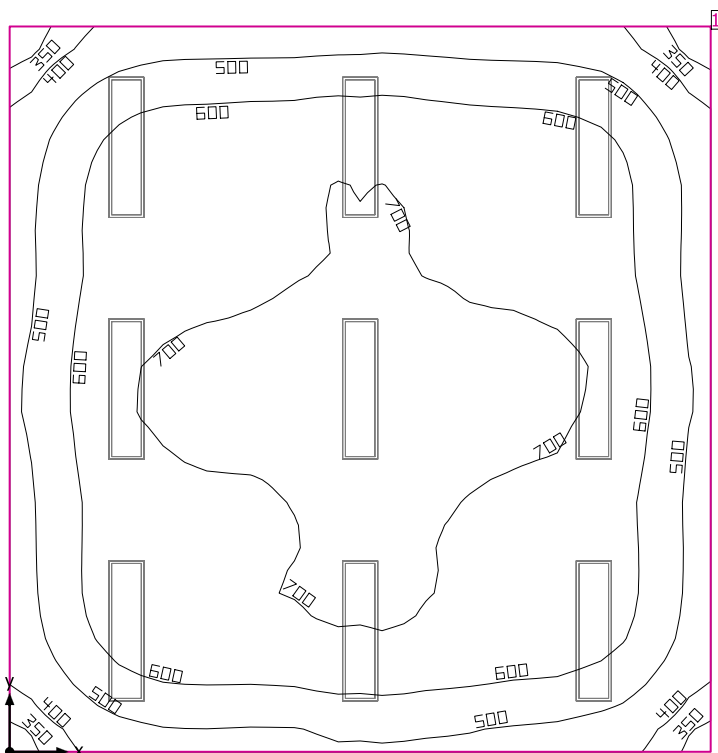
Scale: 1 : 50

## Value grid [lx]

+406	+496	+516	+522	+530	+530	+518	+494	(395)
+512	+636	+657	+666	+680	+672	+655	+628	+500
+534	+654	+679	+693	+704	+692	+676	+649	+524
+536	+666	+702	+716	+723	+712	+694	+667	+536
+545	+689	+726	+737	(749)	+743	+728	+697	+553
+534	+673	+705	+713	+722	+715	+701	+672	+533
+526	+664	+693	+701	+710	+697	+683	+658	+522
+511	+648	+671	+682	+696	+684	+669	+641	+503
+410	+512	+538	+545	+558	+551	+540	+513	+411

Scale: 1 : 50

## ClassRoom 7



Clearance height: 2.650 m, Reflection factors: Ceiling 70.0%, Walls 50.0%, Floor 20.0%, Light loss factor: 0.80

### Workplane

Surface	Result	Average (Target)	Min	Max	Min/average	Min/max
1 Workplane (ClassRoom 7)	Perpendicular illuminance (adaptive) [lx] Height: 0.800 m, Wall zone: 0.000 m	615 (≥ 500)	316	749	0.51	0.42

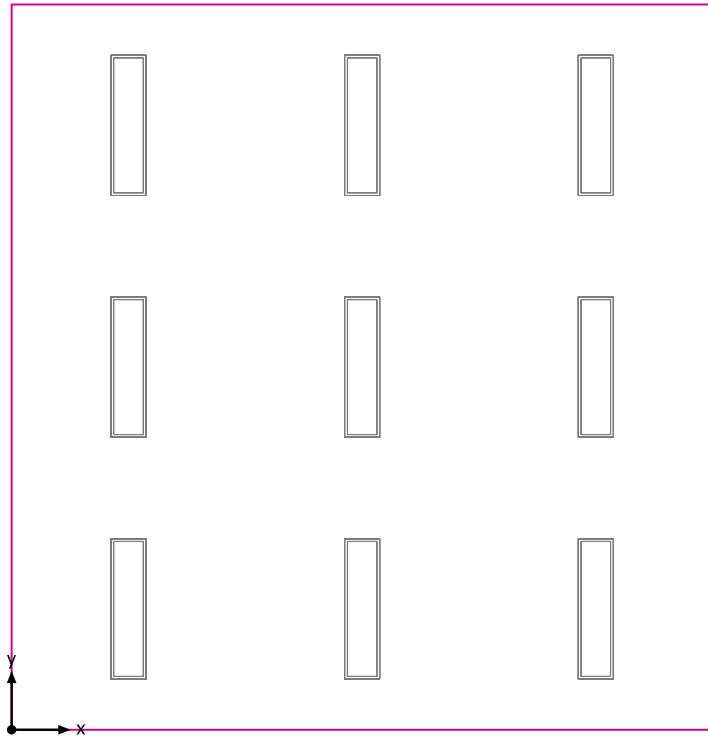
# Luminaire	Φ(Luminaire) [lm]	Power [W]	Luminous efficacy [lm/W]
9 DIALux -	3656	26.1	140.1
<b>Total via all luminaires</b>	<b>32904</b>	<b>234.9</b>	<b>140.1</b>

Lighting power density:  $6.31 \text{ W/m}^2 = 1.03 \text{ W/m}^2/100 \text{ lx}$  (Floor area of room  $37.24 \text{ m}^2$ )

Consumption: 650 kWh/a of maximum 1350 kWh/a

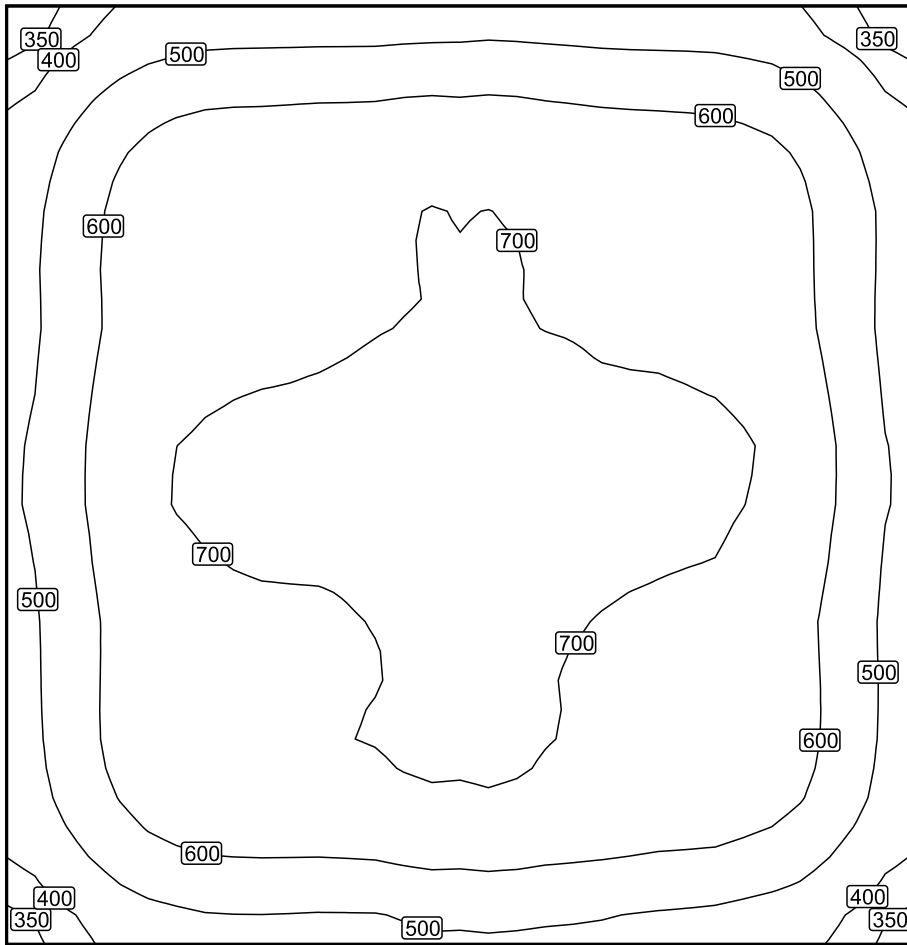
The energy consumption quantities do not take into account light scenes and their dimming levels.

## Workplane (ClassRoom 7) / Perpendicular illuminance (adaptive)



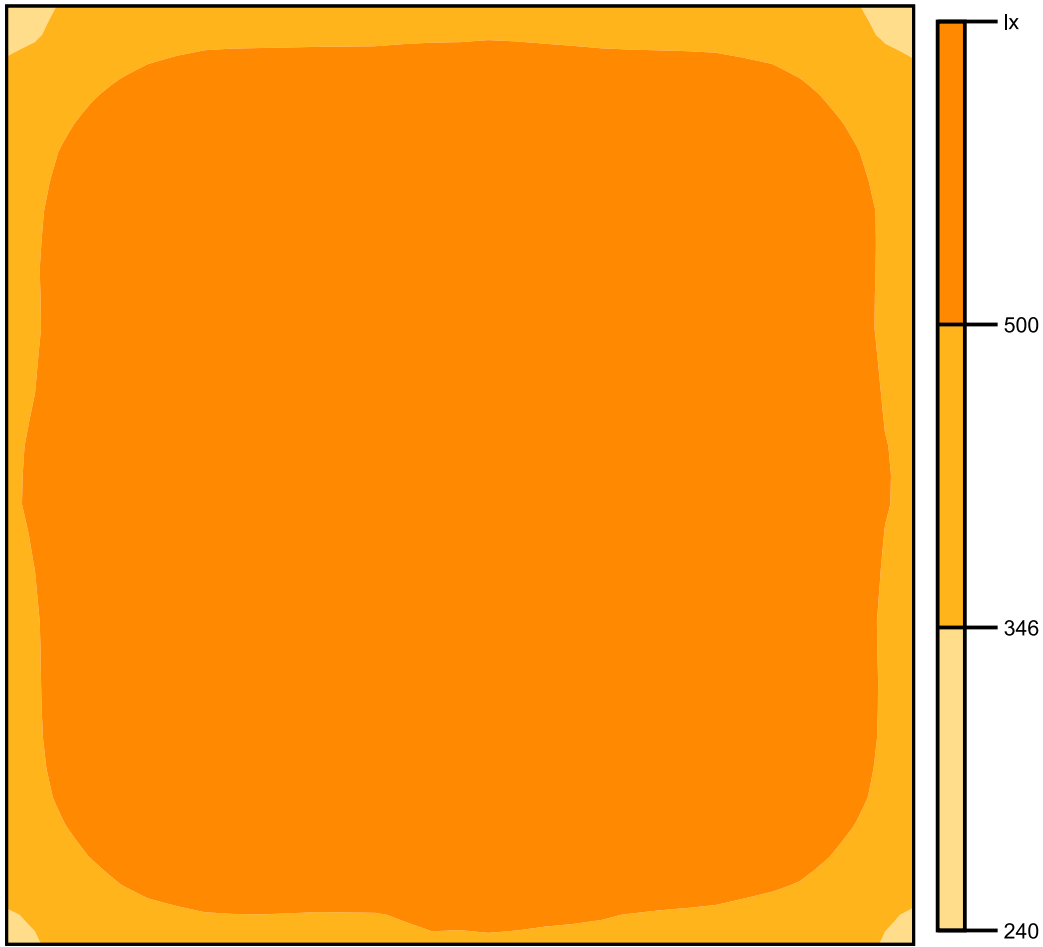
Workplane (ClassRoom 7): Perpendicular illuminance (adaptive) (Surface)  
Light scene: Light scene 1  
Average: 615 lx (Target:  $\geq 500$  lx), Min: 316 lx, Max: 749 lx, Min/average: 0.51, Min/max: 0.42  
Height: 0.800 m, Wall zone: 0.000 m

## Isolines [lx]



Scale: 1 : 50

## False colors [lx]



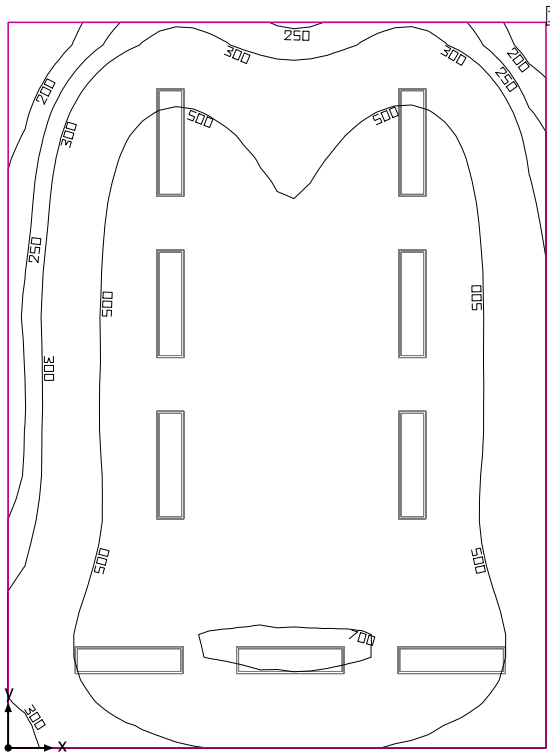
Scale: 1 : 50

## Value grid [lx]

+396	+494	+519	+523	+531	+525	+515	+493	<b>393</b>
+503	+633	+661	+669	+680	+668	+650	+626	+500
+532	+653	+684	+691	+701	+692	+674	+646	+524
+538	+663	+694	+706	+717	+712	+699	+670	+532
+552	+690	+724	+729	<b>745</b>	+741	+726	+694	+550
+539	+670	+700	+708	+723	+717	+699	+667	+534
+530	+662	+689	+696	+710	+699	+685	+658	+529
+512	+648	+675	+679	+696	+682	+666	+643	+512
+412	+517	+543	+541	+558	+552	+534	+504	+411

Scale: 1 : 50

## ClassRoom 8



Clearance height: 2.650 m, Reflection factors: Ceiling 70.0%, Walls 50.0%, Floor 20.0%, Light loss factor: 0.80

### Workplane

Surface	Result	Average (Target)	Min	Max	Min/average	Min/max
1 Workplane (ClassRoom 8)	Perpendicular illuminance (adaptive) [lx] Height: 0.800 m, Wall zone: 0.000 m	504 (≥ 500)	129	713	0.26	0.18

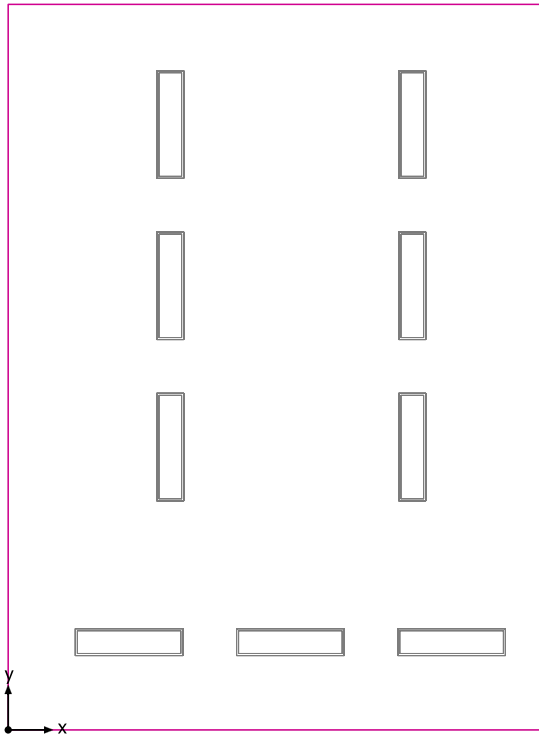
# Luminaire	Φ(Luminaire) [lm]	Power [W]	Luminous efficacy [lm/W]
9 DIALux -	3656	26.1	140.1
<b>Total via all luminaires</b>	<b>32904</b>	<b>234.9</b>	<b>140.1</b>

Lighting power density: 4.84 W/m<sup>2</sup> = 0.96 W/m<sup>2</sup>/100 lx (Floor area of room 48.57 m<sup>2</sup>)

Consumption: 650 kWh/a of maximum 1750 kWh/a

The energy consumption quantities do not take into account light scenes and their dimming levels.

## Workplane (ClassRoom 8) / Perpendicular illuminance (adaptive)



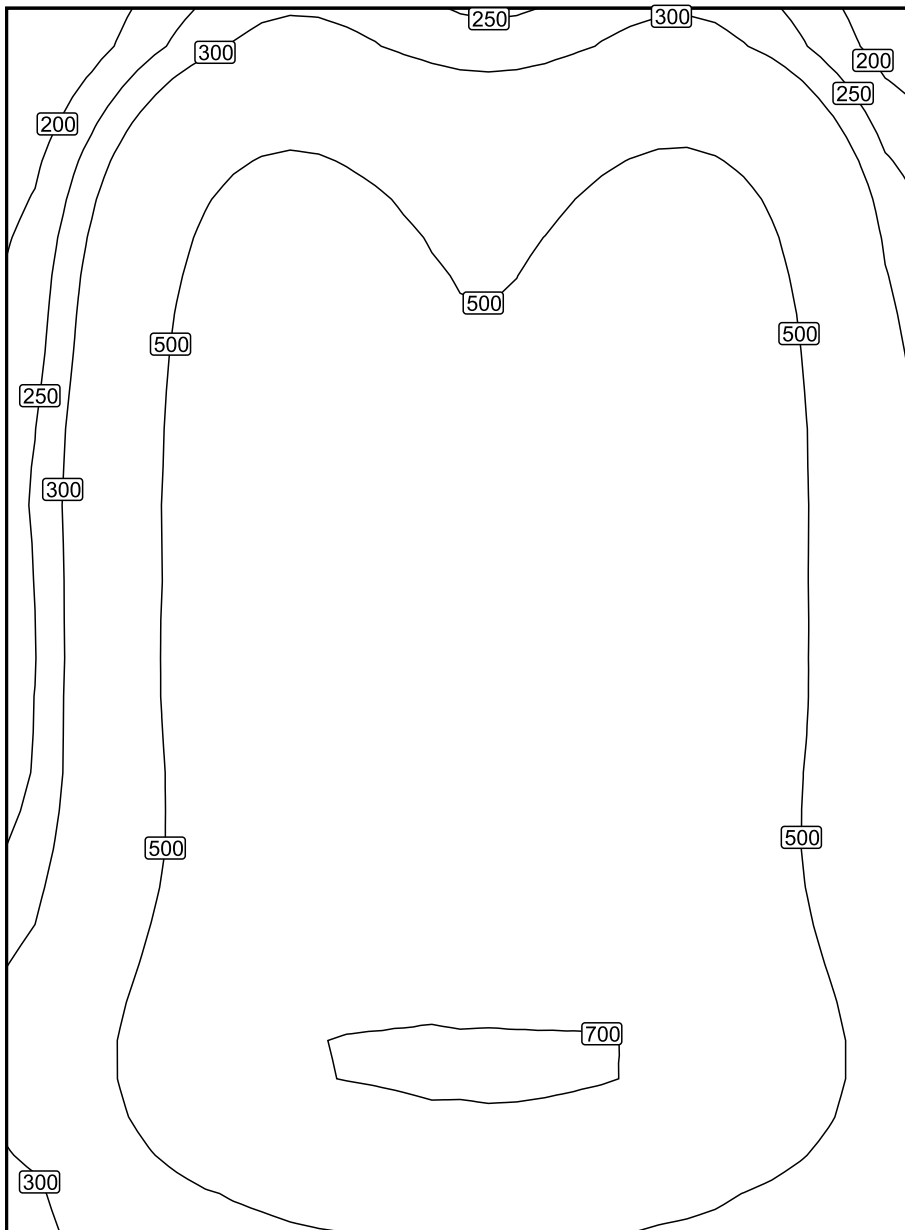
Workplane (ClassRoom 8): Perpendicular illuminance (adaptive) (Surface)

Light scene: Light scene 1

Average: 504 lx (Target:  $\geq 500$  lx), Min: 129 lx, Max: 713 lx, Min/average: 0.26, Min/max: 0.18

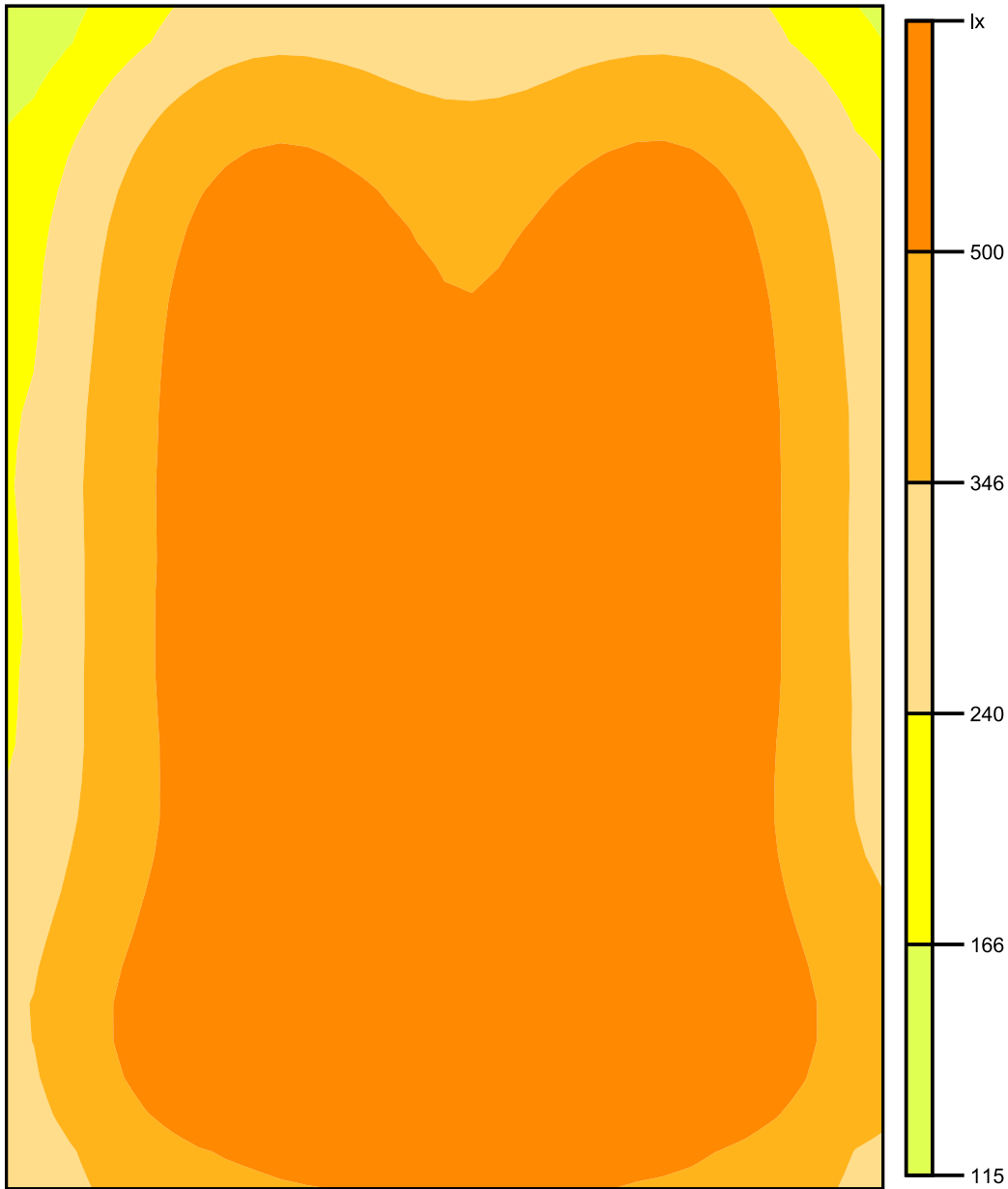
Height: 0.800 m, Wall zone: 0.000 m

## Isolines [lx]



Scale: 1 : 50

## False colors [lx]



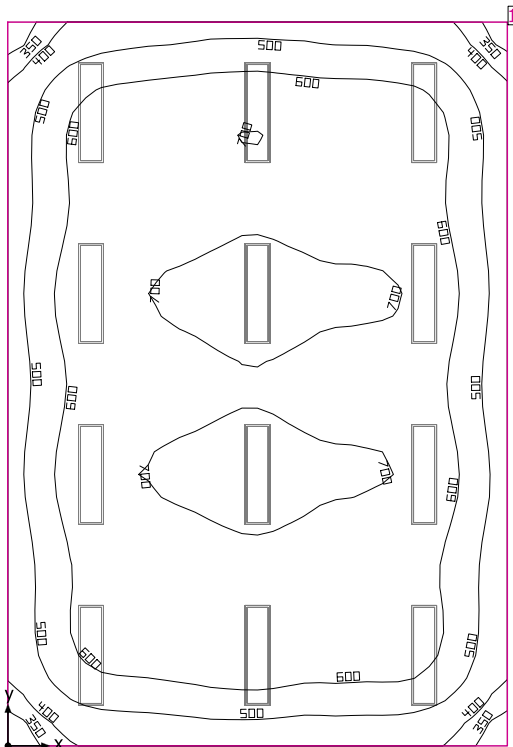
Scale: 1 : 50

## Value grid [lx]

+184	+325	+368	+308	+345	+368	+239
+263	+494	+558	+463	+524	+561	+352
+295	+559	+627	+514	+583	+628	+395
+316	+576	+653	+541	+604	+647	+411
+314	+581	+656	+539	+608	+648	+411
+316	+568	+633	+542	+599	+631	+412
+347	+563	+624	+584	+612	+611	+424
+411	+620	+695	+699	+698	+658	+489
+364	+538	+597	+617	+609	+565	+430

Scale: 1 : 50

## ClassRoom 9



Clearance height: 2.650 m, Reflection factors: Ceiling 70.0%, Walls 50.0%, Floor 20.0%, Light loss factor: 0.80

### Workplane

Surface	Result	Average (Target)	Min	Max	Min/average	Min/max
1 Workplane (ClassRoom 9)	Perpendicular illuminance (adaptive) [lx] Height: 0.800 m, Wall zone: 0.000 m	610 (≥ 500)	318	735	0.52	0.43

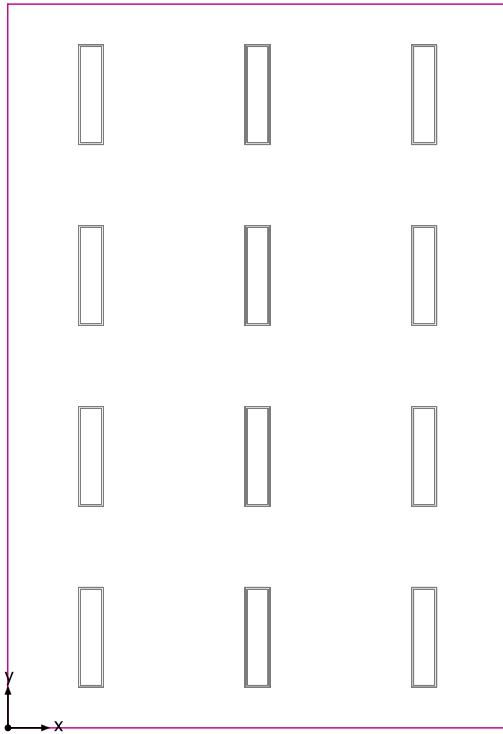
#	Luminaire	Φ(Luminaire) [lm]	Power [W]	Luminous efficacy [lm/W]
12	DIALux -	3656	26.1	140.1
Total via all luminaires		43872	313.2	140.1

Lighting power density: 6.00 W/m<sup>2</sup> = 0.98 W/m<sup>2</sup>/100 lx (Floor area of room 52.20 m<sup>2</sup>)

Consumption: 860 kWh/a of maximum 1850 kWh/a

The energy consumption quantities do not take into account light scenes and their dimming levels.

## Workplane (ClassRoom 9) / Perpendicular illuminance (adaptive)



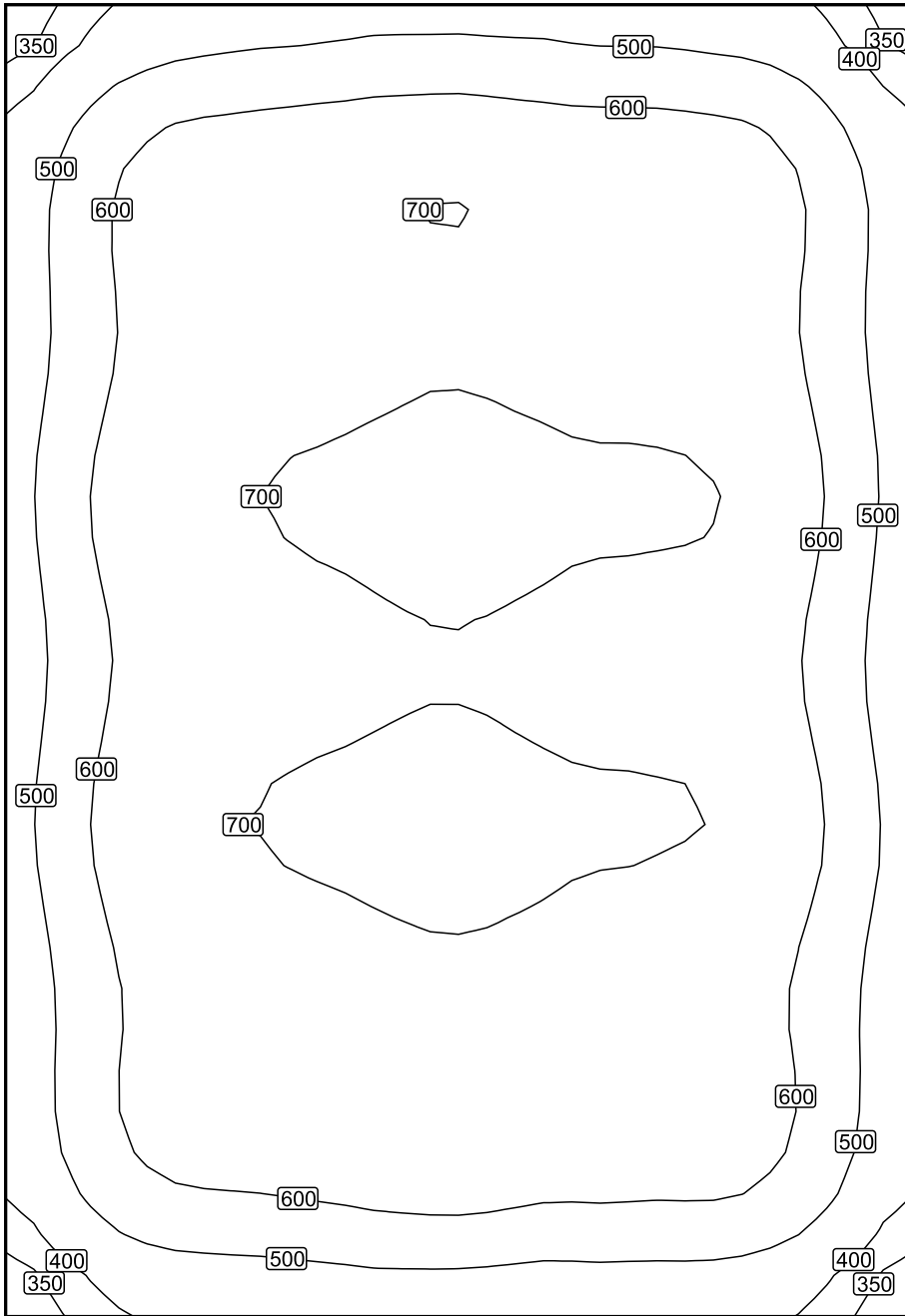
Workplane (ClassRoom 9): Perpendicular illuminance (adaptive) (Surface)

Light scene: Light scene 1

Average: 610 lx (Target:  $\geq 500$  lx), Min: 318 lx, Max: 735 lx, Min/average: 0.52, Min/max: 0.43

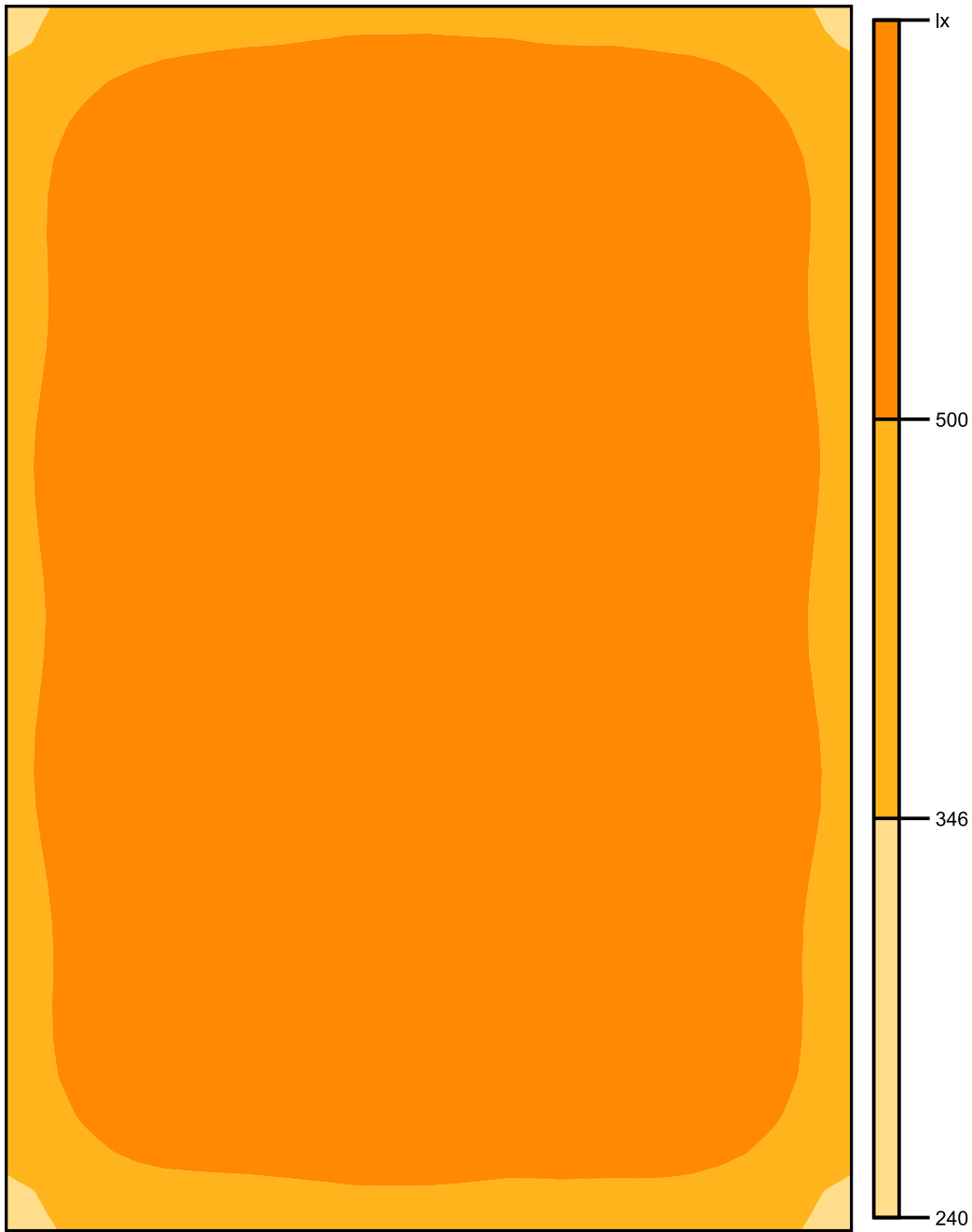
Height: 0.800 m, Wall zone: 0.000 m

## Isolines [lx]



Scale: 1 : 50

## False colors [lx]



Scale: 1 : 50

## Value grid [lx]

+425	+524	+548	+558	+544	+529	+430
+534	+659	+677	+700	+674	+664	+535
+533	+649	+664	+684	+664	+655	+532
+561	+687	+708	+731	+707	+695	+557
+550	+669	+690	+712	+688	+676	+543
+549	+670	+690	+709	+685	+674	+541
+561	+689	+710	<u>734</u>	+705	+691	+559
+527	+646	+661	+682	+662	+643	+523
+524	+646	+660	+685	+667	+654	+520
<u>418</u>	+503	+522	+536	+521	+516	+419

Scale: 1 : 50