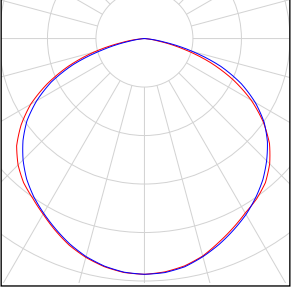


Project-0508

Content

Project-0508	
Luminaire list.....	3
Views.....	4
Site 1	
Building 1	
Storey 1	
Room 1	
Summary.....	8
Luminaire layout plan.....	9
Workplane (Room 1) / Perpendicular illuminance (adaptive).....	10

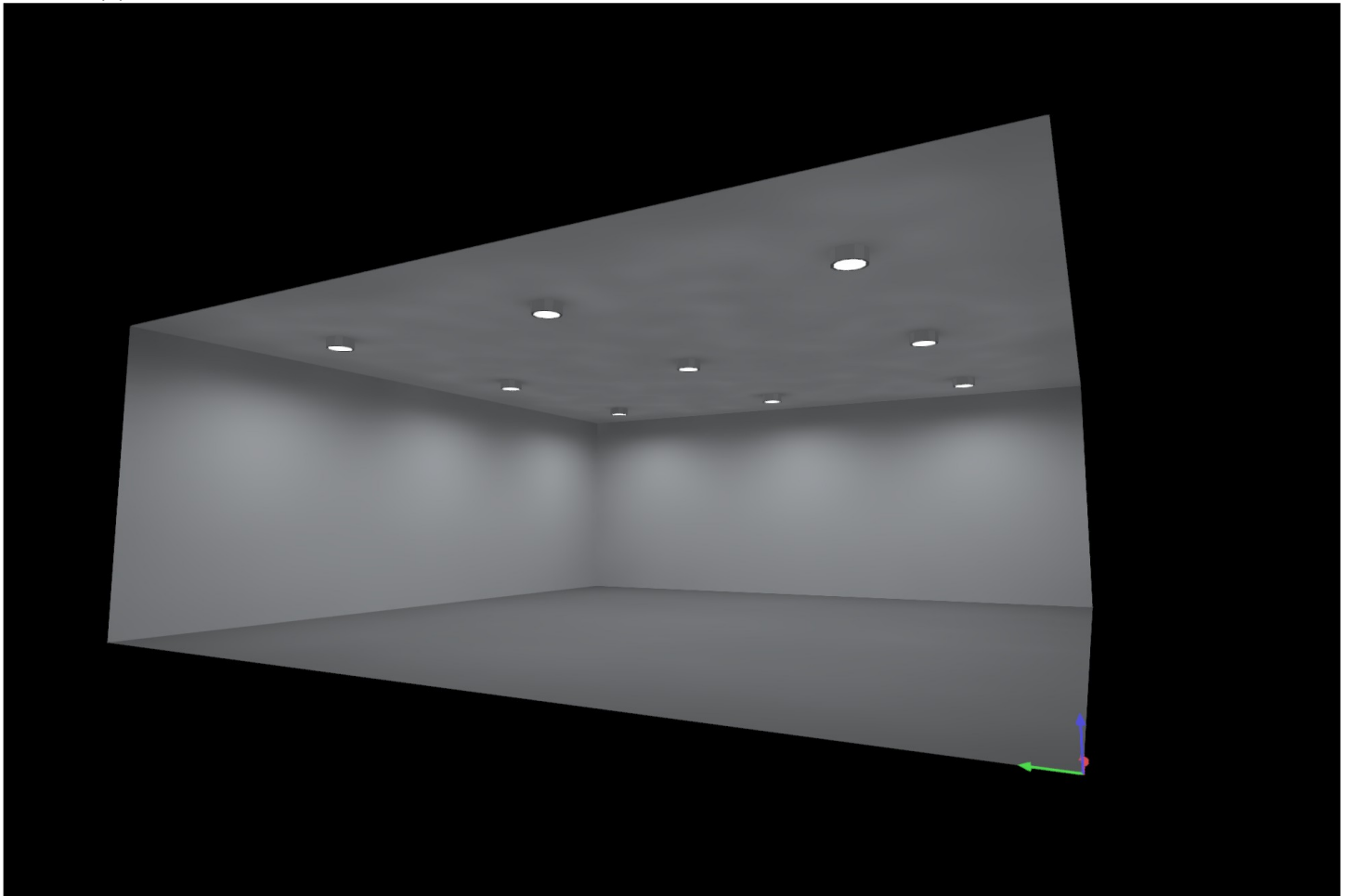
Project-0508

Quantity	Luminaire (Luminous emittance)		
9	LED - 工矿灯-120D Luminous emittance 1 Fitting: 1x120D Absolute photometry Luminaire luminous flux: 15000 lm Power: 100.0 W Luminous efficacy: 150.0 lm/W Colorimetric data 1x120D: CCT 3000 K, CRI 100	See our luminaire catalog for an image of the luminaire.	

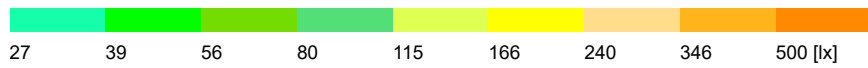
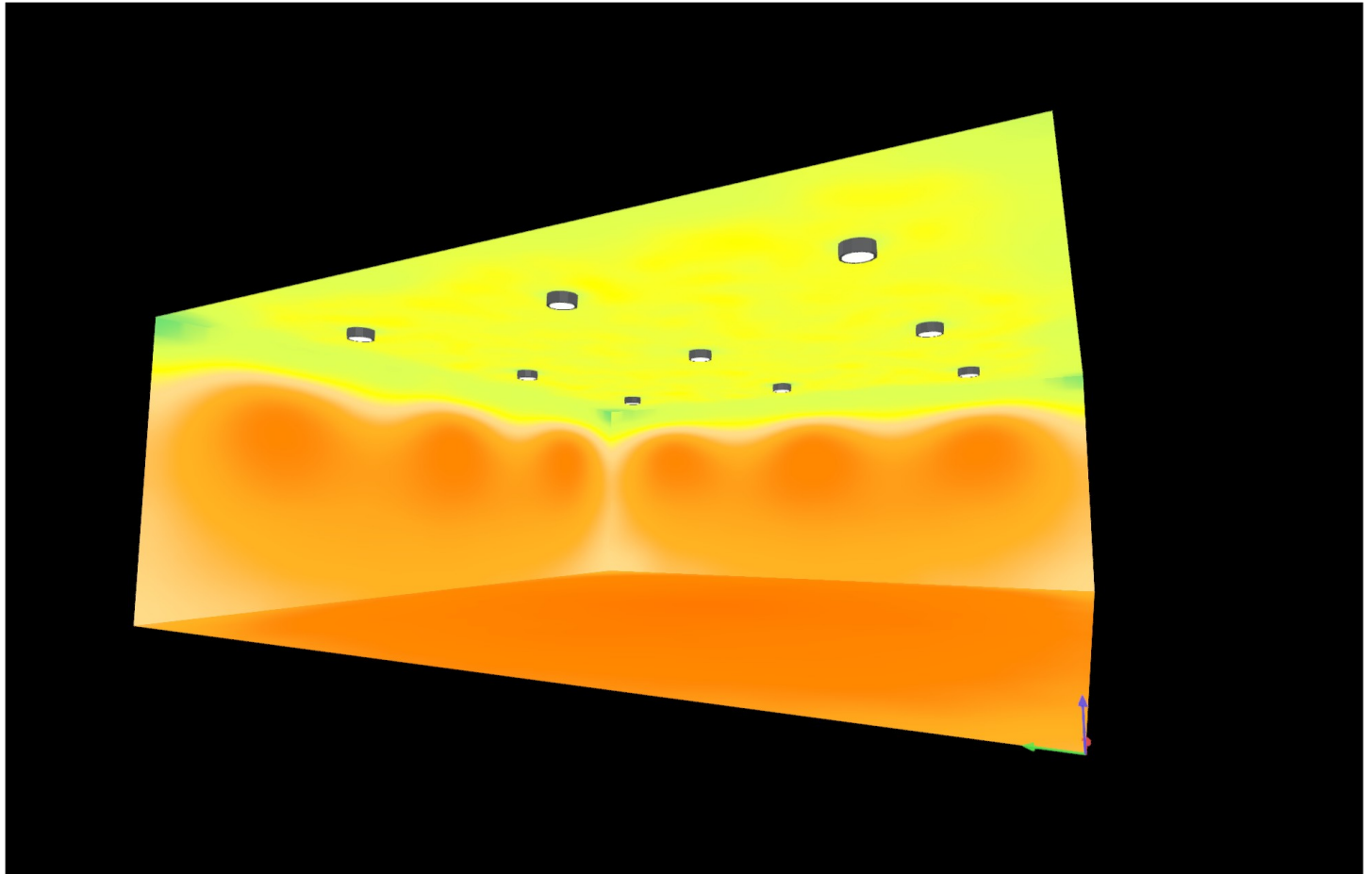
Total lamp luminous flux: 135000 lm, Total luminaire luminous flux: 135000 lm, Total Load: 900.0 W, Luminous efficacy: 150.0 lm/W

Project-0508

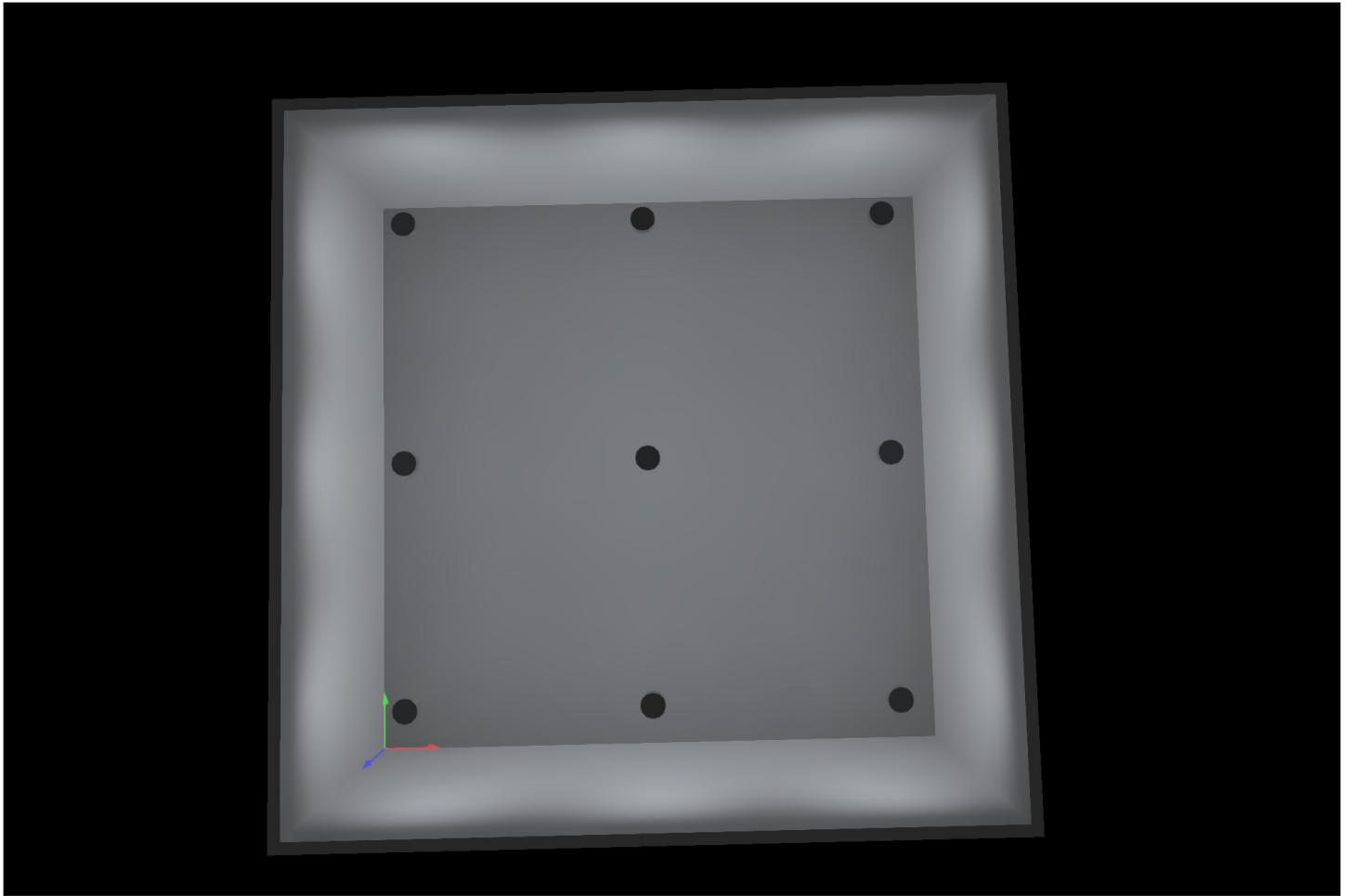
Room 1 (1)



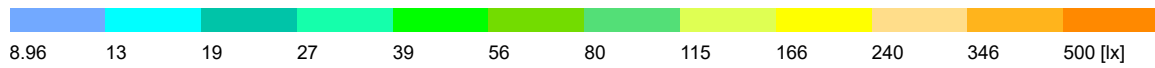
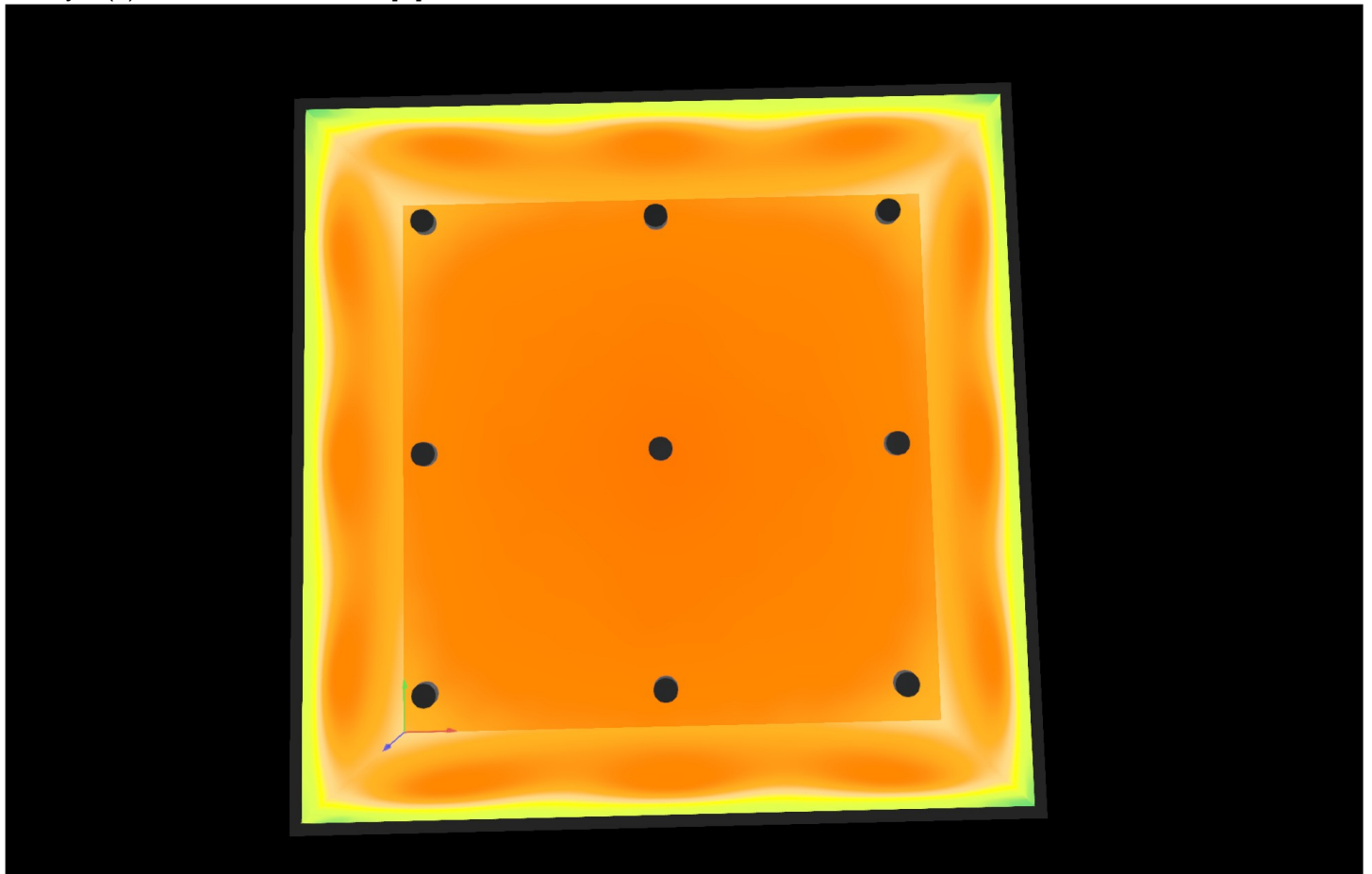
Room 1 (2), Illuminance values in [lx]



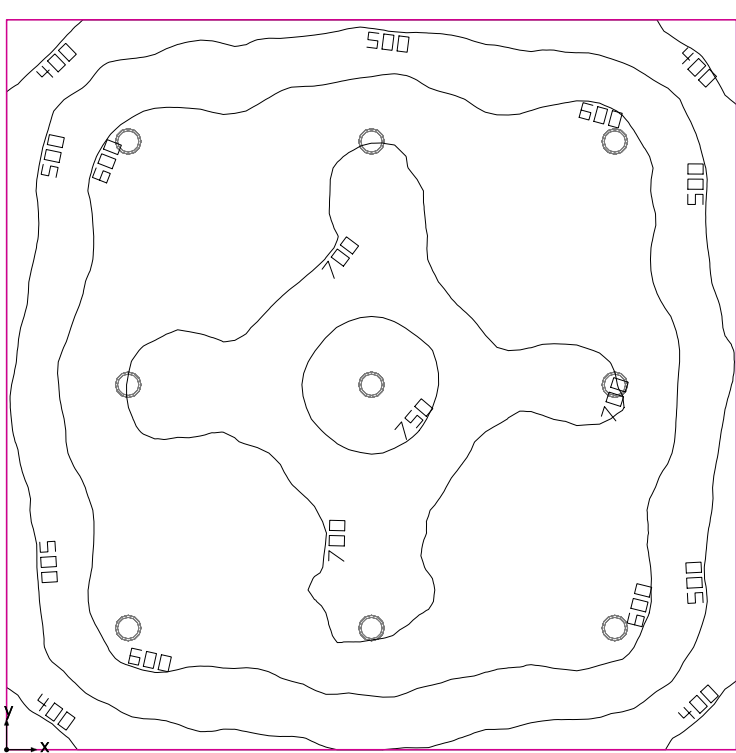
Storey 1 (4)



Storey 1 (3), Illuminance values in [lx]



Room 1



Clearance height: 4.500 m, Reflection factors: Ceiling 70.0%, Walls 50.0%, Floor 20.0%, Light loss factor: 0.80

Workplane

Surface	Result	Average (Target)	Min	Max	Min/average	Min/max
1 Workplane (Room 1)	Perpendicular illuminance (adaptive) [lx] Height: 0.800 m, Wall zone: 0.000 m	612 (≥ 500)	320	783	0.52	0.41

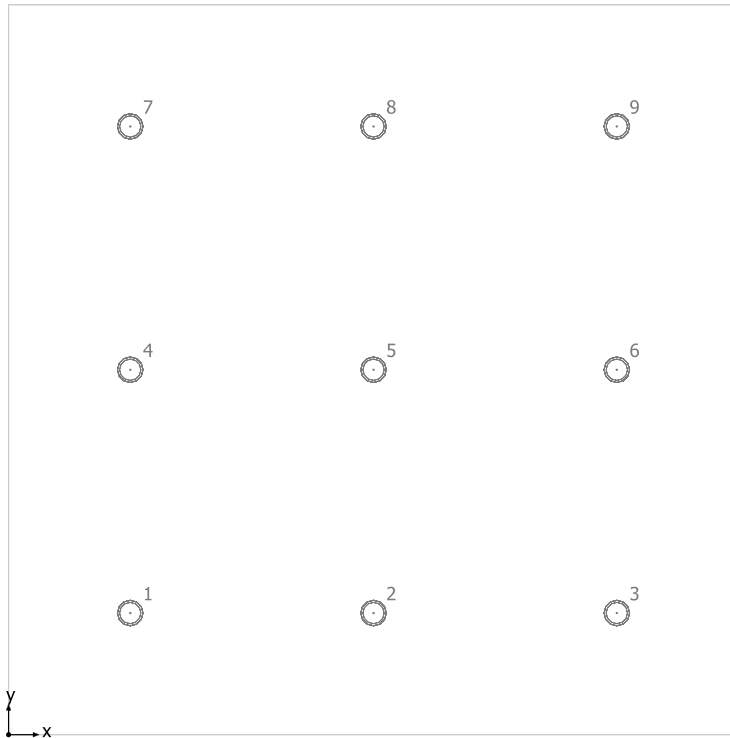
# Luminaire	Φ(Luminaire) [lm]	Power [W]	Luminous efficacy [lm/W]
9 LED - 工矿灯-120D	15000	100.0	150.0
Total via all luminaires	135000	900.0	150.0

Lighting power density: $6.25 \text{ W/m}^2 = 1.02 \text{ W/m}^2/100 \text{ lx}$ (Floor area of room 144.00 m²)

Consumption: 2500 kWh/a of maximum 5050 kWh/a

The energy consumption quantities do not take into account light scenes and their dimming levels.

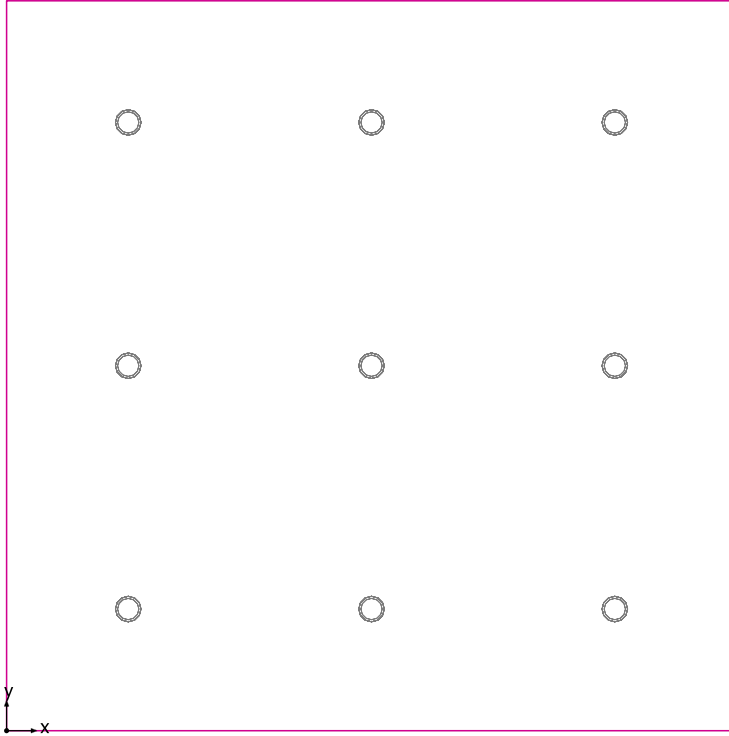
Room 1



LED 工矿灯-120D

No.	X [m]	Y [m]	Mounting height [m]	Light loss factor
1	2.000	2.000	4.500	0.80
2	6.000	2.000	4.500	0.80
3	10.000	2.000	4.500	0.80
4	2.000	6.000	4.500	0.80
5	6.000	6.000	4.500	0.80
6	10.000	6.000	4.500	0.80
7	2.000	10.000	4.500	0.80
8	6.000	10.000	4.500	0.80
9	10.000	10.000	4.500	0.80

Workplane (Room 1) / Perpendicular illuminance (adaptive)



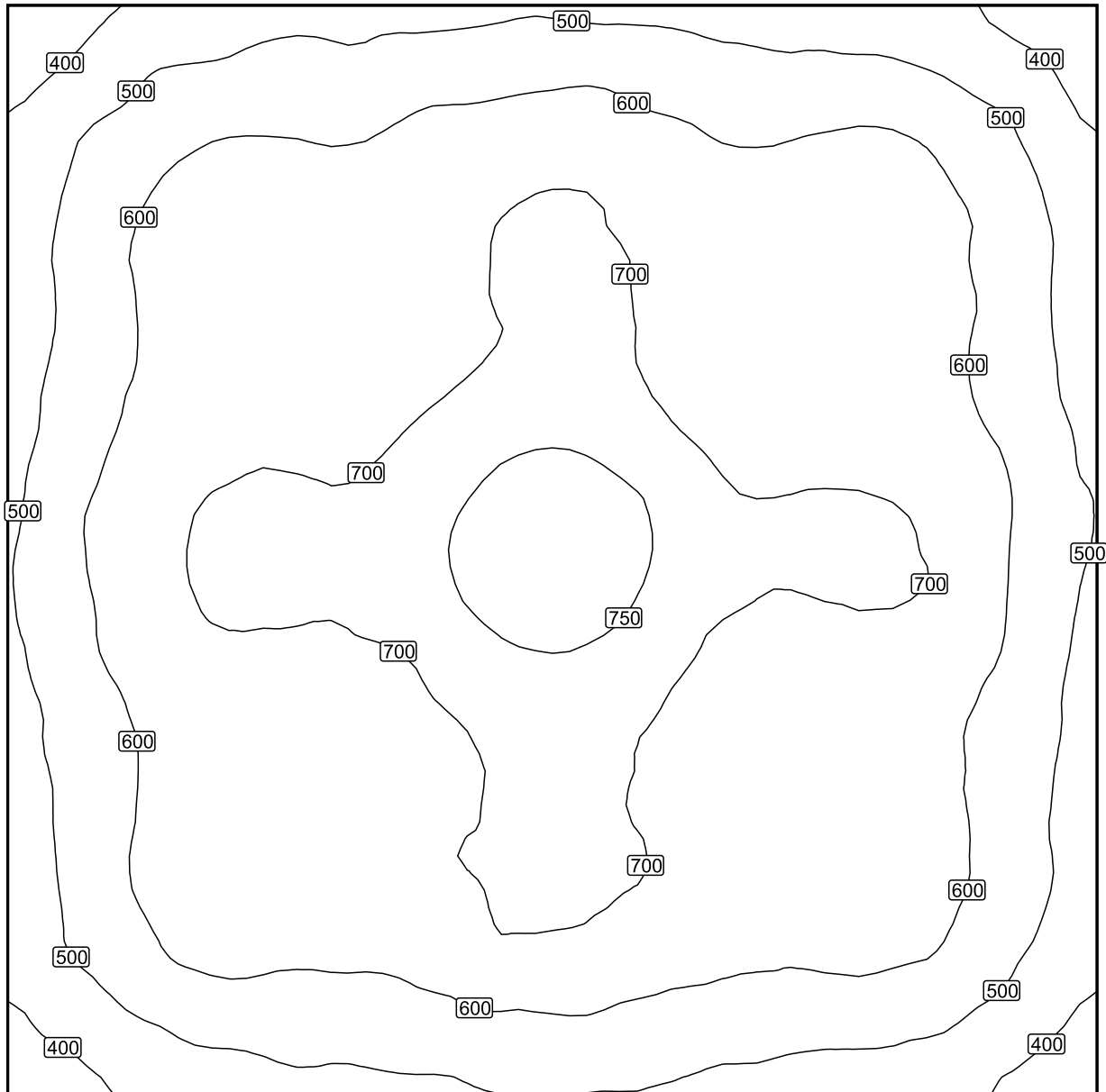
Workplane (Room 1): Perpendicular illuminance (adaptive) (Surface)

Light scene: Light scene 1

Average: 612 lx (Target: ≥ 500 lx), Min: 320 lx, Max: 783 lx, Min/average: 0.52, Min/max: 0.41

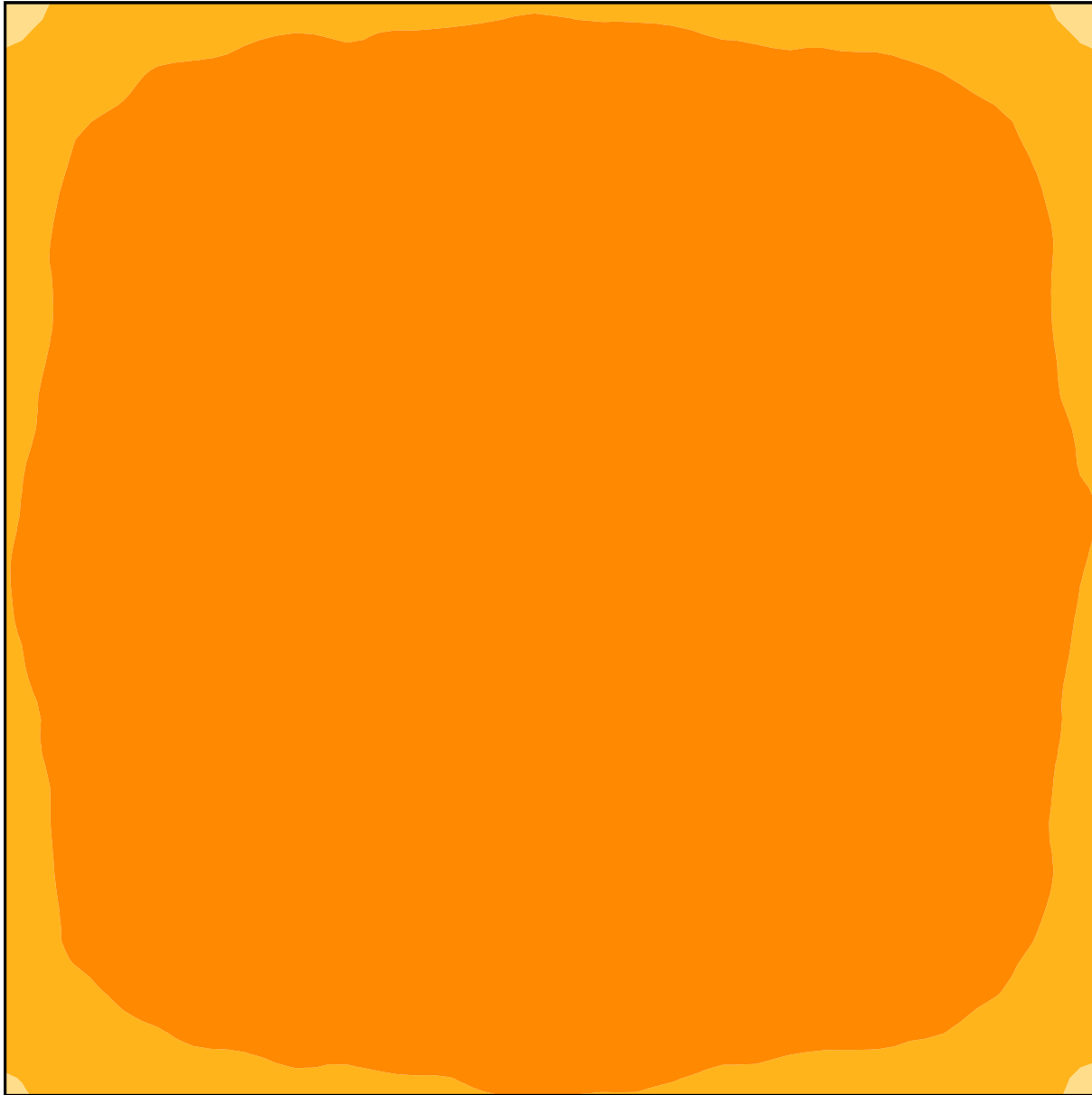
Height: 0.800 m, Wall zone: 0.000 m

Isolines [lx]



Scale: 1 : 75

False colors [lx]



Scale: 1 : 75

Value grid [lx]

+386	+474	+512	+511	+532	+555	+538	+510	+501	+469	+392
+478	+578	+618	+608	+646	+679	+640	+605	+622	+583	+466
+507	+622	+659	+650	+683	+718	+685	+649	+649	+619	+507
+509	+617	+657	+667	+690	+713	+695	+665	+651	+619	+510
+531	+656	+690	+692	+726	+752	+722	+687	+679	+648	+539
+554	+676	+719	+709	+752	+784	+751	+707	+713	+677	+549
+548	+655	+694	+694	+724	+753	+723	+687	+686	+655	+532
+514	+616	+673	+671	+694	+714	+696	+673	+656	+612	+511
+503	+623	+662	+655	+697	+719	+697	+653	+661	+620	+504
+490	+596	+623	+628	+653	+685	+655	+617	+627	+592	+479
+399	+477	+512	+524	+541	+553	+548	+523	+507	+483	+398

Scale: 1 : 75